

Product datasheet

Anti-FSH beta antibody [EPR7930] ab150425

Recombinant RabMAb

2 Images

Overview

Product name	Anti-FSH beta antibody [EPR7930]
Description	Rabbit monoclonal [EPR7930] to FSH beta
Host species	Rabbit
Tested applications	Suitable for: WB Unsuitable for: IHC-P
Species reactivity	Reacts with: Rabbit, Human
Immunogen	Synthetic peptide within Human FSH beta aa 50-150. The exact sequence is proprietary.
Positive control	Brain: pituitary gland (Human) Whole Cell Lysate - adult normal tissue (ab29749) can be used as a positive control in WB. Human pituitary and rabbit pituitary lysates.
General notes	Mouse, Rat: We have preliminary internal testing data to indicate this antibody may not react with these species. Please contact us for more information.

This product is a recombinant monoclonal antibody, which offers several advantages including:

- High batch-to-batch consistency and reproducibility
- Improved sensitivity and specificity
- Long-term security of supply
- Animal-free production

For more information [see here](#).

Our RabMAb[®] technology is a patented hybridoma-based technology for making rabbit monoclonal antibodies. For details on our patents, please refer to [RabMAb[®] patents](#).

Properties

Form	Liquid
Storage instructions	Shipped at 4°C. Store at -20°C.
Storage buffer	pH: 7.2 Preservative: 0.01% Sodium azide Constituents: 9% PBS, 40% Glycerol (glycerin, glycerine), 0.05% BSA, 50% Tissue culture supernatant
Purity	Tissue culture supernatant

Clonality	Monoclonal
Clone number	EPR7930
Isotype	IgG

Applications

The Abpromise guarantee Our [Abpromise guarantee](#) covers the use of ab150425 in the following tested applications. The application notes include recommended starting dilutions; optimal dilutions/concentrations should be determined by the end user.

Application	Abreviews	Notes
WB		1/1000 - 1/10000. Predicted molecular weight: 15 kDa.

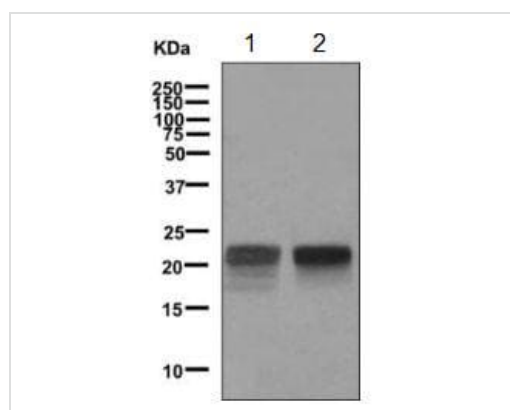
Application notes Is unsuitable for IHC-P.

Target

Relevance Follicle stimulating hormone enables ovarian folliculogenesis to the antral follicle stage and is essential for Sertoli cell proliferation and maintenance of sperm quality in the testis. Members of the pituitary glycoprotein hormone family, of which FSH is one consist of a shared alpha chain and a beta chain encoded by a separate gene. The FSH beta gene encodes the beta subunit of follicle stimulating hormone.

Cellular localization Secreted

Images



Western blot - Anti-FSH beta antibody [EPR7930] (ab150425)

All lanes : Anti-FSH beta antibody [EPR7930] (ab150425) at 1/1000 dilution

Lane 1 : Human pituitary lysate

Lane 2 : Rabbit pituitary lysate

Lysates/proteins at 10 µg per lane.

Secondary

All lanes : Goat anti-rabbit HRP at 1/2000 dilution

Predicted band size: 15 kDa

Why choose a recombinant antibody?

Research with confidence
Consistent and reproducible results

Long-term and scalable supply
Recombinant technology

Success from the first experiment
Confirmed specificity

Ethical standards compliant
Animal-free production

Anti-FSH beta antibody [EPR7930] (ab150425)

Please note: All products are "FOR RESEARCH USE ONLY. NOT FOR USE IN DIAGNOSTIC PROCEDURES"

Our Abpromise to you: Quality guaranteed and expert technical support

- Replacement or refund for products not performing as stated on the datasheet
- Valid for 12 months from date of delivery
- Response to your inquiry within 24 hours
- We provide support in Chinese, English, French, German, Japanese and Spanish
- Extensive multi-media technical resources to help you
- We investigate all quality concerns to ensure our products perform to the highest standards

If the product does not perform as described on this datasheet, we will offer a refund or replacement. For full details of the Abpromise, please visit <https://www.abcam.com/abpromise> or contact our technical team.

Terms and conditions

- Guarantee only valid for products bought direct from Abcam or one of our authorized distributors