

Product datasheet

Anti-FUT8 antibody ab204124

2 Images

Overview

Product name	Anti-FUT8 antibody
Description	Rabbit polyclonal to FUT8
Host species	Rabbit
Tested applications	Suitable for: IHC-P, WB
Species reactivity	Reacts with: Mouse, Rat, Human
Immunogen	Synthetic peptide within Human FUT8 aa 320-370 conjugated to Keyhole Limpet Haemocyanin (KLH). The exact sequence is proprietary. Sequence: HGDPVWVWSQFVKYLIRPQPWLEKEIEEATKKLGFK HPVIGVHVRRTDK V Database link: Q9BYC5
	Run BLAST with Run BLAST with
Positive control	Human cervical carcinoma tissue. Rat brain tissue.

Properties

Form	Liquid
Storage instructions	Shipped at 4°C. Store at +4°C short term (1-2 weeks). Upon delivery aliquot. Store at -20°C long term. Avoid freeze / thaw cycle.
Storage buffer	Preservative: 0.09% Sodium azide Constituents: 50% Glycerol, 0.01% BSA
Purity	Protein A purified
Clonality	Polyclonal
Isotype	IgG

Applications

Our [Abpromise guarantee](#) covers the use of **ab204124** in the following tested applications.

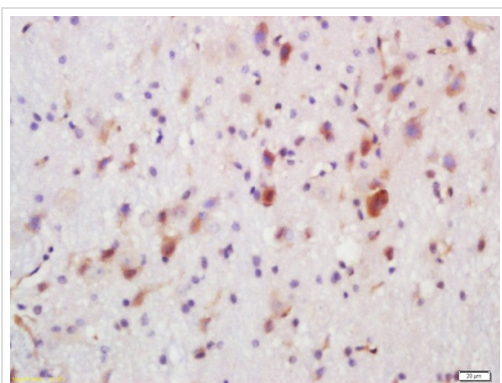
The application notes include recommended starting dilutions; optimal dilutions/concentrations should be determined by the end user.

Application	Abreviews	Notes
IHC-P		1/100 - 1/500. When using fluorescent probe the recommended dilution range is 1/50 - 1/200.
WB		1/100 - 1/1000. Predicted molecular weight: 66 kDa.

Target

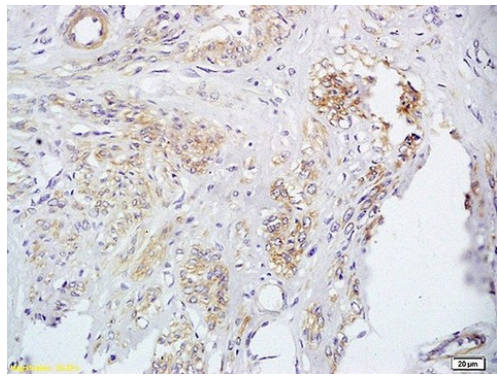
Function	Catalyzes the addition of fucose in alpha 1-6 linkage to the first GlcNAc residue, next to the peptide chains in N-glycans.
Pathway	Protein modification; protein glycosylation.
Sequence similarities	Belongs to the glycosyltransferase 23 family. Contains 1 SH3 domain.
Cellular localization	Golgi apparatus > Golgi stack membrane. Membrane-bound form in trans cisternae of Golgi.
Form	The expression of this gene may contribute to the malignancy of cancer cells and to their invasive and metastatic capabilities. There are 2 isoforms produced by alternative splicing. Immunogen is not present in isoform 2 (also known as Retinal).

Images



Immunohistochemical analysis of formalin-fixed and paraffin embedded rat brain tissue labeling FUT8 with ab204124 at 1/200 followed by conjugation to the secondary antibody and DAB staining.

Immunohistochemistry (Formalin/PFA-fixed paraffin-embedded sections) - Anti-FUT8 antibody (ab204124)



Immunohistochemical analysis of formalin-fixed and paraffin embedded human cervical carcinoma tissue labeling FUT8 with ab204124 at 1/200 followed by conjugation to the secondary antibody and DAB staining.

Immunohistochemistry (Formalin/PFA-fixed paraffin-embedded sections) - Anti-FUT8 antibody (ab204124)

Please note: All products are "FOR RESEARCH USE ONLY. NOT FOR USE IN DIAGNOSTIC PROCEDURES"

Our Abpromise to you: Quality guaranteed and expert technical support

- Replacement or refund for products not performing as stated on the datasheet
- Valid for 12 months from date of delivery
- Response to your inquiry within 24 hours
- We provide support in Chinese, English, French, German, Japanese and Spanish
- Extensive multi-media technical resources to help you
- We investigate all quality concerns to ensure our products perform to the highest standards

If the product does not perform as described on this datasheet, we will offer a refund or replacement. For full details of the Abpromise, please visit <https://www.abcam.com/abpromise> or contact our technical team.

Terms and conditions

- Guarantee only valid for products bought direct from Abcam or one of our authorized distributors