



Product datasheet

Anti-G-CSF antibody [8G5F7] ab204998

5 Images

Overview

<b>Product name</b>	Anti-G-CSF antibody [8G5F7]
<b>Description</b>	Mouse monoclonal [8G5F7] to G-CSF
<b>Host species</b>	Mouse
<b>Tested applications</b>	<b>Suitable for:</b> WB, Flow Cyt, ICC/IF
<b>Species reactivity</b>	<b>Reacts with:</b> Human
<b>Immunogen</b>	<p>Recombinant full length protein corresponding to Human G-CSF aa 1-207. Expressed in E.coli. Sequence:</p> <p>MAGPATQSPM KLMALQLLLW HSALWTVQEA            TPLGPASSLP QSFLKCLEQ VRKIQGDGAA            LQEKLVSECA TYKLCHPEEL VLLGHSLGIP            WAPLSSCPSQ ALQLAGCLSQ LHSGLFLYQG            LLQALEGISP ELGPTLDTLQ LDVADFATTI            WQQMEELGMA PALQPTQGAM PAFASAFQRR            AGGVLVASHL QSFLEVSRYR LRHLAQP</p> <p>Database link: <a href="#">P09919</a></p> <p style="text-align: right;"> <a href="#">Run BLAST with</a>       <a href="#">Run BLAST with</a></p>
<b>Positive control</b>	Human G-CSF (aa1-207) recombinant protein, G-CSF (aa1-207)-hlgGFc transfected HEK293 whole cell lysate, A549 or Hela cells.

Properties

<b>Form</b>	Liquid
<b>Storage instructions</b>	Shipped at 4°C. Store at +4°C short term (1-2 weeks). Upon delivery aliquot. Store at -20°C long term. Avoid freeze / thaw cycle.
<b>Storage buffer</b>	Preservative: 0.05% Sodium azide Constituent: 99% PBS
<b>Purity</b>	Protein G purified
<b>Purification notes</b>	Purified from tissue culture supernatant.
<b>Clonality</b>	Monoclonal
<b>Clone number</b>	8G5F7

Isotype

IgG1

## Applications

Our [Abpromise guarantee](#) covers the use of **ab204998** in the following tested applications.

The application notes include recommended starting dilutions; optimal dilutions/concentrations should be determined by the end user.

Application	Abreviews	Notes
WB		1/500 - 1/2000. Predicted molecular weight: 22 kDa.
Flow Cyt		1/200 - 1/400.
ICC/IF		1/200 - 1/1000.

## Target

### Function

Granulocyte/macrophage colony-stimulating factors are cytokines that act in hematopoiesis by controlling the production, differentiation, and function of 2 related white cell populations of the blood, the granulocytes and the monocytes-macrophages. This CSF induces granulocytes.

### Sequence similarities

Belongs to the IL-6 superfamily.

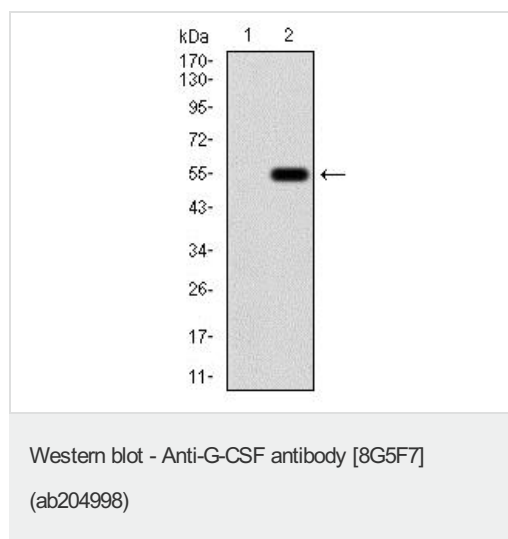
### Post-translational modifications

O-glycan consists of Gal-GalNAc disaccharide which can be modified with up to two sialic acid residues (done in recombinantly expressed G-CSF from CHO cells).

### Cellular localization

Secreted.

## Images

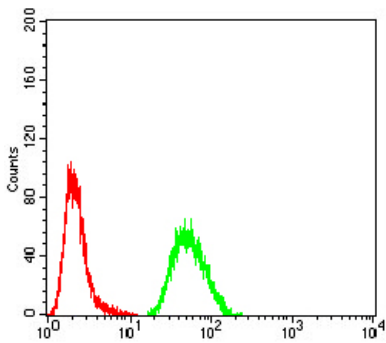


**All lanes :** Anti-G-CSF antibody [8G5F7] (ab204998) at 1/500 dilution

**Lane 1 :** HEK293 whole cell lysate.

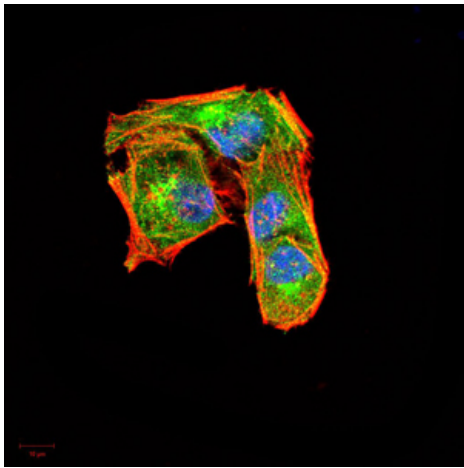
**Lane 2 :** Human G-CSF (aa1-207)-hlgGFc transfected HEK293 whole cell lysate.

**Predicted band size:** 22 kDa



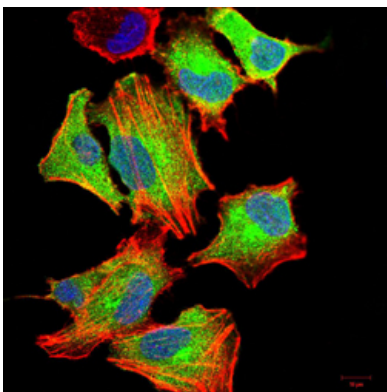
Flow Cytometry - Anti-G-CSF antibody [8G5F7]  
(ab204998)

Flow cytometric analysis of A549 cells labelling G-CSF with ab204998 (green) at a 1/200 dilution and negative control (red).



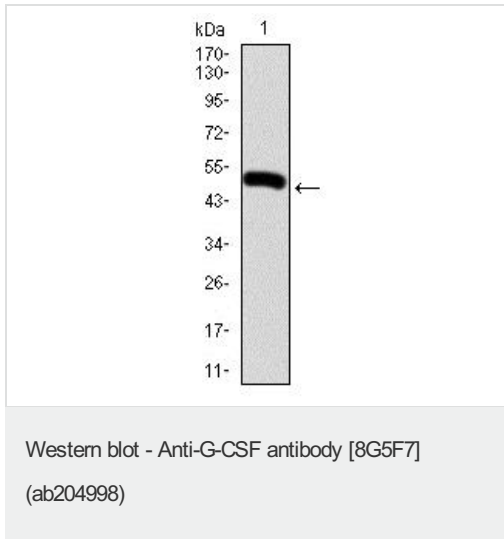
Immunocytochemistry/ Immunofluorescence - Anti-G-CSF antibody [8G5F7] (ab204998)

Immunofluorescence analysis of HeLa cells labeling G-CSF with ab204998 at a 1/200 dilution (green), followed by Alexa Fluor<sup>®</sup> 555 phalloidin (red). Nuclear counterstain DRAQ5 fluorescent DNA dye used (blue).



Immunocytochemistry/ Immunofluorescence - Anti-G-CSF antibody [8G5F7] (ab204998)

Immunofluorescence analysis of A549 cells labeling G-CSF with ab204998 at a 1/200 dilution (green), followed by Alexa Fluor<sup>®</sup> 555 phalloidin (red). Nuclear counterstain DRAQ5 fluorescent DNA dye used (blue).



Anti-G-CSF antibody [8G5F7] (ab204998) at 1/500 dilution +  
Human G-CSF (aa1-207) recombinant protein

**Predicted band size:** 22 kDa

**Additional bands at:** 48.2 kDa. We are unsure as to the identity of these extra bands.

**Please note:** All products are "FOR RESEARCH USE ONLY. NOT FOR USE IN DIAGNOSTIC PROCEDURES"

### Our Abpromise to you: Quality guaranteed and expert technical support

---

- Replacement or refund for products not performing as stated on the datasheet
- Valid for 12 months from date of delivery
- Response to your inquiry within 24 hours
- We provide support in Chinese, English, French, German, Japanese and Spanish
- Extensive multi-media technical resources to help you
- We investigate all quality concerns to ensure our products perform to the highest standards

If the product does not perform as described on this datasheet, we will offer a refund or replacement. For full details of the Abpromise, please visit <https://www.abcam.com/abpromise> or contact our technical team.

### Terms and conditions

---

- Guarantee only valid for products bought direct from Abcam or one of our authorized distributors