

Product datasheet

Anti-G-CSF antibody [EPR3203(N)(B)] ab181053

Recombinant RabMAb

★★★★☆ 1 Abreviews 7 References 9 Images

Overview

Product name	Anti-G-CSF antibody [EPR3203(N)(B)]
Description	Rabbit monoclonal [EPR3203(N)(B)] to G-CSF
Host species	Rabbit
Tested applications	Suitable for: Flow Cyt (Intra), WB, ICC/IF, IP
Species reactivity	Reacts with: Mouse, Rat, Human
Immunogen	Synthetic peptide. This information is proprietary to Abcam and/or its suppliers.
Positive control	WB: A549, K-562, HepG2, HeLa, MCF7, MOLT-4, PC-3, KM3, NCI-H460 and HT-1376 cell lysates; Mouse and rat brain lysates. ICC/IF: BxPC-3 and HT-1376 cells. IP: G-CSF IP in K562 cell lysate. Flow Cyt (intra): K562 cells.
General notes	<p>This product is a recombinant monoclonal antibody, which offers several advantages including:</p> <ul style="list-style-type: none"> - High batch-to-batch consistency and reproducibility - Improved sensitivity and specificity - Long-term security of supply - Animal-free production <p>For more information see here.</p> <p>Our RabMAb[®] technology is a patented hybridoma-based technology for making rabbit monoclonal antibodies. For details on our patents, please refer to RabMAb[®] patents.</p> <p>We are constantly working hard to ensure we provide our customers with best in class antibodies. As a result of this work we are pleased to now offer this antibody in purified format. We are in the process of updating our datasheets. The purified format is designated 'PUR' on our product labels. If you have any questions regarding this update, please contact our Scientific Support team.</p>

Properties

Form	Liquid
Storage instructions	Shipped at 4°C. Store at +4°C short term (1-2 weeks). Upon delivery aliquot. Store at -20°C long term. Avoid freeze / thaw cycle.
Storage buffer	Preservative: 0.01% Sodium azide Constituents: 40% Glycerol, PBS, 0.05% BSA

Purity	Protein A purified
Clonality	Monoclonal
Clone number	EPR3203(N)(B)
Isotype	IgG

Applications

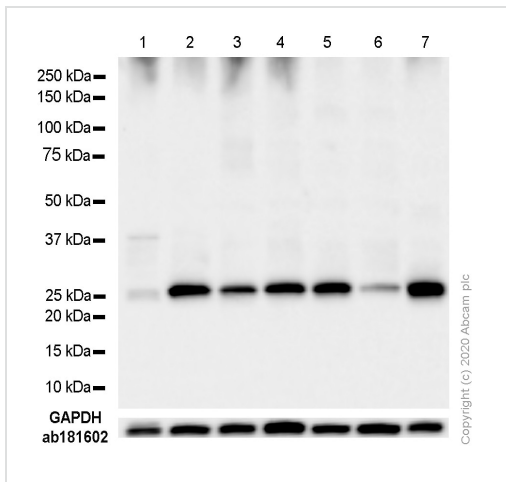
The Abpromise guarantee Our [Abpromise guarantee](#) covers the use of ab181053 in the following tested applications. The application notes include recommended starting dilutions; optimal dilutions/concentrations should be determined by the end user.

Application	Abreviews	Notes
Flow Cyt (Intra)		1/200.
WB		1/1000 - 1/10000. Detects a band of approximately 22 kDa (predicted molecular weight: 22 kDa).
ICC/IF		1/500. For unpurified use at 1/50 - 1/100 dilution.
IP		1/100. For unpurified use at 1/20 dilution.

Target

Function	Granulocyte/macrophage colony-stimulating factors are cytokines that act in hematopoiesis by controlling the production, differentiation, and function of 2 related white cell populations of the blood, the granulocytes and the monocytes-macrophages. This CSF induces granulocytes.
Sequence similarities	Belongs to the IL-6 superfamily.
Post-translational modifications	O-glycan consists of Gal-GalNAc disaccharide which can be modified with up to two sialic acid residues (done in recombinantly expressed G-CSF from CHO cells).
Cellular localization	Secreted.

Images



Western blot - Anti-G-CSF antibody [EPR3203(N)(B)] (ab181053)

All lanes : Anti-G-CSF antibody [EPR3203(N)(B)] (ab181053) at 1/1000 dilution

Lane 1 : A549 (Human lung carcinoma epithelial cell) cell lysate

Lane 2 : K-562 (Human chronic myelogenous leukemia lymphoblast) cell lysate

Lane 3 : HepG2 (Human hepatocellular carcinoma epithelial cell) cell lysate

Lane 4 : HeLa (Human cervix adenocarcinoma epithelial cell) cell lysate

Lane 5 : MCF7 (Human breast adenocarcinoma epithelial cell) cell lysate

Lane 6 : MOLT-4 (Human lymphoblastic leukemia T lymphoblast) cell lysate

Lane 7 : PC-3 (Human prostate adenocarcinoma epithelial cell) cell lysate

Lysates/proteins at 10 µg per lane.

Secondary

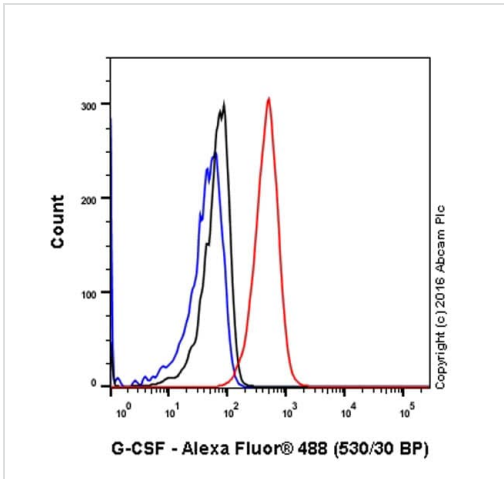
All lanes : Goat Anti-Rabbit IgG H&L (HRP) (ab97051) at 1/20000 dilution

Predicted band size: 22 kDa

Observed band size: 25 kDa

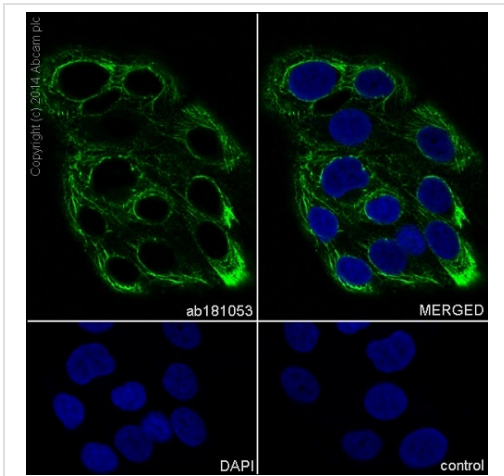
Blocking and diluting buffer and concentration: 5% NFDN/TBST

Exposure time: 4 s



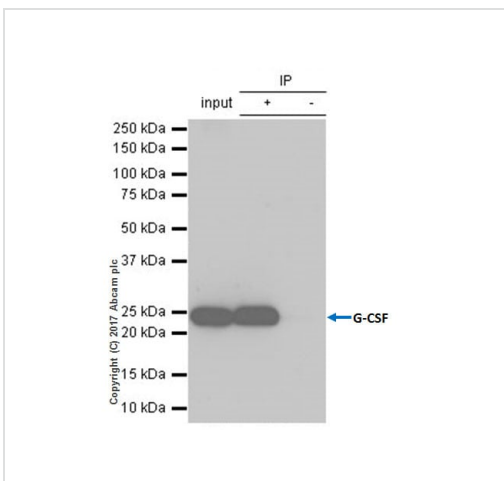
Flow Cytometry (Intracellular) - Anti-G-CSF antibody
[EPR3203(N)(B)] (ab181053)

Intracellular Flow Cytometry analysis of K562 (human chronic myelogenous leukemia) cells labeling G-CSF with purified ab181053 at 1/200 dilution (10ug/mL) (red). Cells were fixed with 4% paraformaldehyde and permeabilised with 90% methanol. A Goat anti rabbit IgG (Alexa Fluor® 488) at 1/2000 dilution was used as the secondary antibody. Rabbit monoclonal IgG (Black) was used as the isotype control, cells without incubation with primary antibody and secondary antibody (Blue) were used as the unlabeled control.



Immunocytochemistry/ Immunofluorescence - Anti-G-CSF antibody [EPR3203(N)(B)] (ab181053)

Immunocytochemistry/ Immunofluorescence analysis of BxPC-3 (Human pancreas adenocarcinoma epithelial cell) cells labeling G-CSF with Purified ab181053 at 1:500 dilution (4.0µg/ml). Cells were fixed in 100% Methanol. ab150077 Goat anti rabbit IgG(Alexa Fluor® 488) was used as the secondary antibody at 1:1000 dilution. DAPI nuclear was used as a counterstain. PBS instead of the primary antibody was used as the secondary antibody only control.



Immunoprecipitation - Anti-G-CSF antibody
[EPR3203(N)(B)] (ab181053)

ab181053 (purified) at 1:100 dilution (2ug) immunoprecipitating G-CSF in K562 (Human chronic myelogenous leukemia lymphoblast) whole cell lysate.

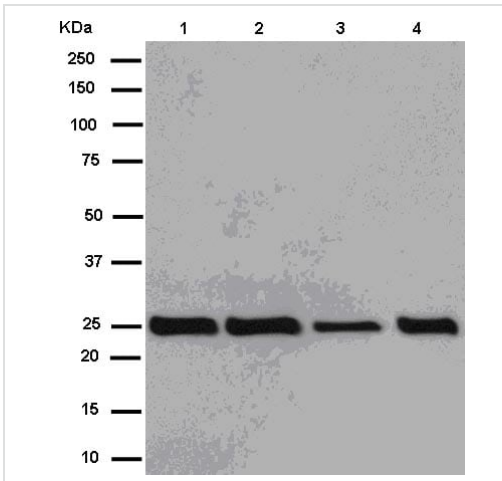
Lane 1 (input): K562 (Human chronic myelogenous leukemia lymphoblast) whole cell lysate 10ug

Lane 2 (+): ab181053 & K562 (Human chronic myelogenous leukemia lymphoblast) whole cell lysate

Lane 3 (-): Rabbit monoclonal IgG (ab172730) instead of ab181053 in K562 (Human chronic myelogenous leukemia lymphoblast) whole cell lysate.

For western blotting, VeriBlot for IP Detection Reagent (HRP) (ab131366) was used for detection at 1:1000 dilution.

Blocking and diluting buffer: 5% NFDm/TBST."



Western blot - Anti-G-CSF antibody [EPR3203(N)(B)] (ab181053)

All lanes : Anti-G-CSF antibody [EPR3203(N)(B)] (ab181053) at 1/2000 dilution (unpurified)

Lane 1 : K562 cell lysate

Lane 2 : KM3 cell lysate

Lane 3 : NCI-H460 cell lysate

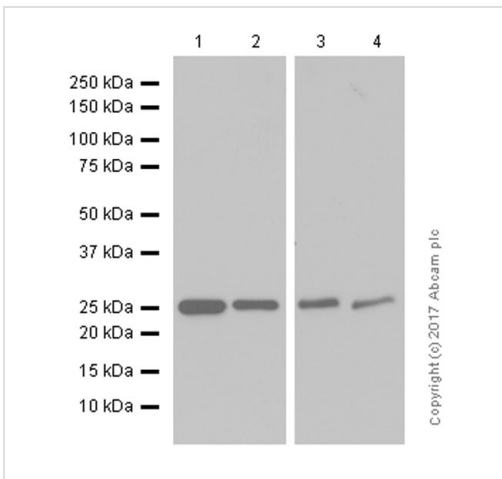
Lane 4 : HT-1376 cell lysate

Lysates/proteins at 20 µg per lane.

Secondary

All lanes : Goat Anti-Rabbit IgG, (H+L) HRP at 1/1000 dilution

Predicted band size: 22 kDa



Western blot - Anti-G-CSF antibody [EPR3203(N)(B)] (ab181053)

All lanes : Anti-G-CSF antibody [EPR3203(N)(B)] (ab181053) at 1/2000 dilution (purified)

Lane 1 : K-562 (Human chronic myelogenous leukemia lymphoblast) whole cell lysates

Lane 2 : HT-1376 (Human urinary bladder carcinoma epithelial cell) whole cell lysates

Lane 3 : Mouse brain lysates

Lane 4 : Rat brain lysates

Lysates/proteins at 20 µg per lane.

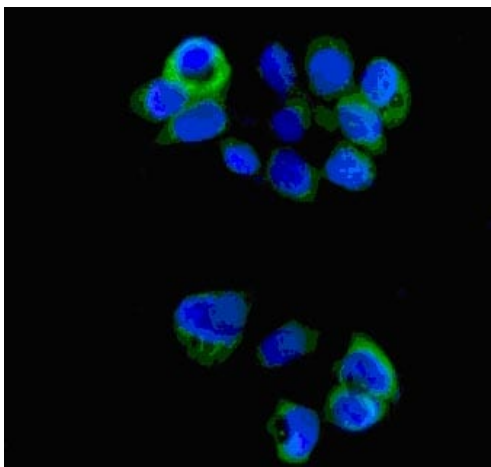
Secondary

All lanes : Goat Anti-Rabbit IgG H&L (HRP) (ab97051) at 1/20000 dilution

Predicted band size: 22 kDa

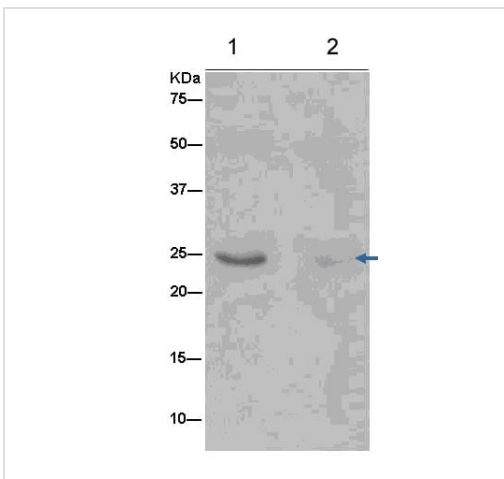
Observed band size: 25 kDa

Blocking and diluting buffer: 5% NFDm/TBST



Immunocytochemistry/ Immunofluorescence - Anti-G-CSF antibody [EPR3203(N)(B)] (ab181053)

Immunofluorescent analysis of HT-1376 cells (paraformaldehyde-fixed, 4%) labeling G-CSF with unpurified ab181053 at 1/100 dilution followed by Goat anti rabbit IgG (Alexa Fluor® 488) secondary at 1/200 dilution and counter-stained with DAPI (blue).



Immunoprecipitation - Anti-G-CSF antibody [EPR3203(N)(B)] (ab181053)

Western blot analysis of immunoprecipitation pellet from K562 cell lysate (lane 1) or a Negative control (lane 2) immunoprecipitated using unpurified ab181053 at 1/20 dilution.

Secondary: Anti-Rabbit IgG (HRP), specific to the non-reduced form of IgG at 1/1500 dilution.

Why choose a recombinant antibody?



Research with confidence
Consistent and reproducible results



Long-term and scalable supply
Recombinant technology



Success from the first experiment
Confirmed specificity



Ethical standards compliant
Animal-free production

Anti-G-CSF antibody [EPR3203(N)(B)] (ab181053)

Please note: All products are "FOR RESEARCH USE ONLY. NOT FOR USE IN DIAGNOSTIC PROCEDURES"

Our Abpromise to you: Quality guaranteed and expert technical support

- Replacement or refund for products not performing as stated on the datasheet
- Valid for 12 months from date of delivery
- Response to your inquiry within 24 hours
- We provide support in Chinese, English, French, German, Japanese and Spanish
- Extensive multi-media technical resources to help you
- We investigate all quality concerns to ensure our products perform to the highest standards

If the product does not perform as described on this datasheet, we will offer a refund or replacement. For full details of the Abpromise, please visit <https://www.abcam.com/abpromise> or contact our technical team.

Terms and conditions

- Guarantee only valid for products bought direct from Abcam or one of our authorized distributors