


Product datasheet

Anti-GABRD antibody ab110014

3 References 1 Image

Overview

Product name	Anti-GABRD antibody
Description	Rabbit polyclonal to GABRD
Host species	Rabbit
Specificity	Detects endogenous levels of total GABRD protein
Tested applications	Suitable for: WB
Species reactivity	Reacts with: Human Predicted to work with: Mouse, Rat 
Immunogen	Synthetic peptide corresponding to Human GABRD (internal sequence).
Positive control	Extracts from LOVO or HT29 cells
General notes	This product was previously labelled as GABA A Receptor delta

The Life Science industry has been in the grips of a reproducibility crisis for a number of years. Abcam is leading the way in addressing this with our range of recombinant monoclonal antibodies and knockout edited cell lines for gold-standard validation. Please check that this product meets your needs before purchasing.

If you have any questions, special requirements or concerns, please send us an inquiry and/or contact our Support team ahead of purchase. Recommended alternatives for this product can be found below, along with publications, customer reviews and Q&As

Properties

Form	Liquid
Storage instructions	Shipped at 4°C. Store at -20°C. Stable for 12 months at -20°C.
Storage buffer	pH: 7.40 Preservative: 0.02% Sodium azide Constituents: 0.88% Sodium chloride, 50% Glycerol (glycerin, glycerine), PBS
Purity	Immunogen affinity purified
Clonality	Polyclonal
Isotype	IgG

Applications

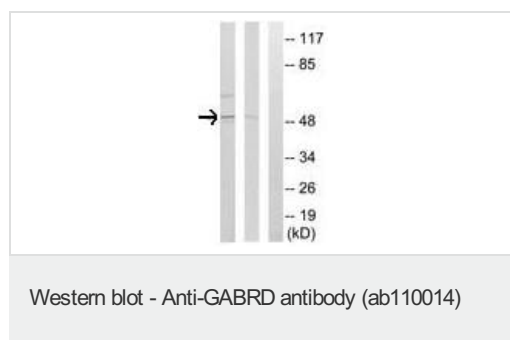
The Abpromise guarantee Our [Abpromise guarantee](#) covers the use of ab110014 in the following tested applications. The application notes include recommended starting dilutions; optimal dilutions/concentrations should be determined by the end user.

Application	Abreviews	Notes
WB		1/500 - 1/1000. Predicted molecular weight: 50 kDa.

Target

Function	GABA, the major inhibitory neurotransmitter in the vertebrate brain, mediates neuronal inhibition by binding to the GABA/benzodiazepine receptor and opening an integral chloride channel.
Involvement in disease	<p>Defects in GABRD are the cause of susceptibility to generalized epilepsy with febrile seizures plus type 5 (GEFS+5) [MIM:604233]. Generalized epilepsy with febrile seizures-plus refers to a rare familial condition with incomplete penetrance and large intrafamilial variability. Patients display febrile seizures persisting sometimes beyond the age of 6 years and/or a variety of afebrile seizure types. GEFS+ is a disease combining febrile seizures, generalized seizures often precipitated by fever at age 6 years or more, and partial seizures, with a variable degree of severity.</p> <p>Defects in GABRD are the cause of susceptibility to idiopathic generalized epilepsy type 10 (IGE10) [MIM:613060]. A disorder characterized by recurring generalized seizures in the absence of detectable brain lesions and/or metabolic abnormalities. Generalized seizures arise diffusely and simultaneously from both hemispheres of the brain.</p> <p>Defects in GABRD are the cause of susceptibility to juvenile myoclonic epilepsy type 7 (EJM7) [MIM:613060]. A subtype of idiopathic generalized epilepsy. Patients have afebrile seizures only, with onset in adolescence (rather than in childhood) and myoclonic jerks which usually occur after awakening and are triggered by sleep deprivation and fatigue.</p>
Sequence similarities	Belongs to the ligand-gated ion channel (TC 1.A.9) family. Gamma-aminobutyric acid receptor (TC 1.A.9.5) subfamily. GABRD sub-subfamily.
Cellular localization	Cell junction > synapse > postsynaptic cell membrane. Cell membrane.

Images



All lanes : Anti-GABRD antibody (ab110014) at 1/500 dilution

Lane 1 : extracts from HT29 cells (5-30 ug total protein) with no immunizing peptide

Lane 2 : extracts from LOVO cells (5-30 ug total protein) with no immunizing peptide

Lane 3 : extracts from LOVO cells (5-30 ug total protein) with immunizing peptide (5-10 ug)

Predicted band size: 50 kDa

Please note: All products are "FOR RESEARCH USE ONLY. NOT FOR USE IN DIAGNOSTIC PROCEDURES"

Our Abpromise to you: Quality guaranteed and expert technical support

- Replacement or refund for products not performing as stated on the datasheet
- Valid for 12 months from date of delivery
- Response to your inquiry within 24 hours

- We provide support in Chinese, English, French, German, Japanese and Spanish
- Extensive multi-media technical resources to help you
- We investigate all quality concerns to ensure our products perform to the highest standards

If the product does not perform as described on this datasheet, we will offer a refund or replacement. For full details of the Abpromise, please visit <https://www.abcam.com/abpromise> or contact our technical team.

Terms and conditions

- Guarantee only valid for products bought direct from Abcam or one of our authorized distributors