

Product datasheet

Anti-Galectin 3 antibody [5C21] ab278071

2 Images

Overview

Product name	Anti-Galectin 3 antibody [5C21]
Description	Mouse monoclonal [5C21] to Galectin 3
Host species	Mouse
Tested applications	Suitable for: WB, ICC
Species reactivity	Reacts with: Mouse, Rat, Human
Immunogen	Recombinant full length protein corresponding to Human Galectin 3. Database link: P17931
Positive control	WB: Mouse brain lysate; rat brain, liver, kidney, lung. HEK-293 cell lysate. ICC: Embryonic rat (E20) cortical neuron-glia cells.

Properties

Form	Liquid
Storage instructions	Shipped at 4°C. Store at +4°C short term (1-2 weeks). Upon delivery aliquot. Store at -20°C. Avoid freeze / thaw cycle.
Storage buffer	Preservative: 0.03% Sodium azide Constituents: 49.07% PBS, 50% Glycerol (glycerin, glycerine)
Purity	Protein G purified
Purification notes	Purified from Tissue Culture supernatant.
Clonality	Monoclonal
Clone number	5C21
Isotype	IgG1

Applications

Our [Abpromise guarantee](#) covers the use of **ab278071** in the following tested applications.

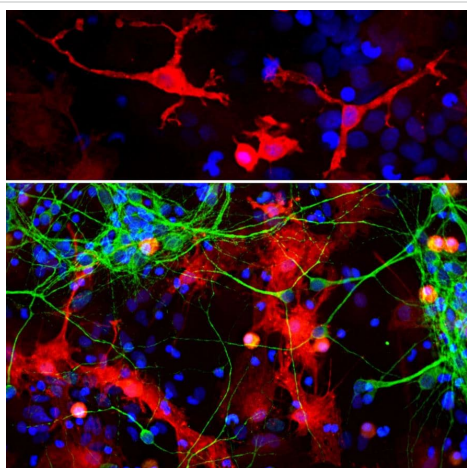
The application notes include recommended starting dilutions; optimal dilutions/concentrations should be determined by the end user.

Application	Abreviews	Notes
WB		1/2000. Predicted molecular weight: 26 kDa.
ICC		1/1000.

Target

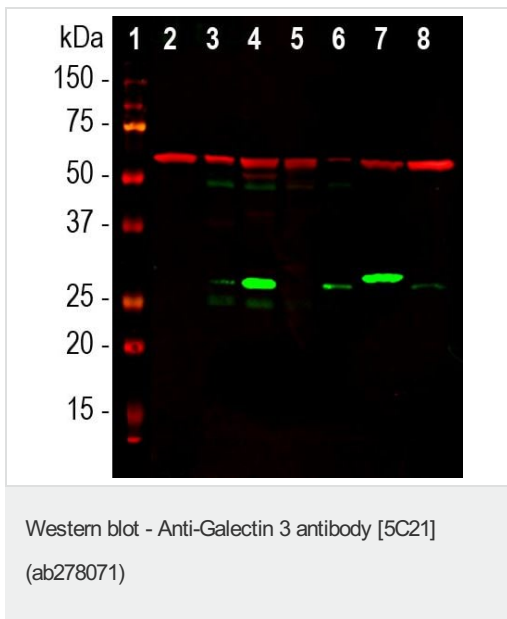
Function	Galactose-specific lectin which binds IgE. May mediate with the alpha-3, beta-1 integrin the stimulation by CSPG4 of endothelial cells migration. Together with DMBT1, required for terminal differentiation of columnar epithelial cells during early embryogenesis.
Tissue specificity	A major expression is found in the colonic epithelium. It is also abundant in the activated macrophages.
Sequence similarities	Contains 1 galectin domain.
Cellular localization	Nucleus. Cytoplasmic in adenomas and carcinomas. May be secreted by a non-classical secretory pathway and associate with the cell surface.

Images



Cortical neuron-glia cell culture from E20 rat stained for galectin 3 (red) using ab278071 at 1/1000 dilution in immunocytochemistry. A chicken polyclonal antibody to MAP2 (green) was used at 1/10000 dilution. The blue is Hoechst staining of nuclear DNA.

Immunocytochemistry - Anti-Galectin 3 antibody
[5C21] (ab278071)



Lanes 2-8 : Anti-Galectin 3 antibody [5C21] (ab278071) at 1/2000 dilution

Lane 1 : Molecular weight marker

Lane 2 : Mouse brain lysate

Lane 3 : Rat brain

Lane 4 : Rat liver

Lane 5 : Rat heart

Lane 6 : Rat kidney

Lane 7 : Rat lung

Lane 8 : HEK-293 cell lysate

Predicted band size: 26 kDa

The band at about 30kDa mark corresponds to the galectin 3 protein. The same blot was simultaneously probed with chicken polyclonal to HSP60 (red), at 1/20000 dilution which reveals HSP60 protein in all preparations.

Please note: All products are "FOR RESEARCH USE ONLY. NOT FOR USE IN DIAGNOSTIC PROCEDURES"

Our Abpromise to you: Quality guaranteed and expert technical support

- Replacement or refund for products not performing as stated on the datasheet
- Valid for 12 months from date of delivery
- Response to your inquiry within 24 hours
- We provide support in Chinese, English, French, German, Japanese and Spanish
- Extensive multi-media technical resources to help you
- We investigate all quality concerns to ensure our products perform to the highest standards

If the product does not perform as described on this datasheet, we will offer a refund or replacement. For full details of the Abpromise,

please visit <https://www.abcam.com/abpromise> or contact our technical team.

Terms and conditions

- Guarantee only valid for products bought direct from Abcam or one of our authorized distributors