

Product datasheet

Anti-Galectin 3 antibody - C-terminal ab227949

KO **VALIDATED**

[6 Images](#)

Overview

Product name	Anti-Galectin 3 antibody - C-terminal
Description	Rabbit polyclonal to Galectin 3 - C-terminal
Host species	Rabbit
Tested applications	Suitable for: WB, IHC-P
Species reactivity	Reacts with: Rat, Human
Immunogen	Recombinant fragment within Human Galectin 3 (C terminal). The exact sequence is proprietary. Database link: P17931
Positive control	WB: HeLa, A549 and HCT 116 whole cell extracts; HEK-293T transfected with Galectin 3 whole cell lysate; Rat colon lysate. IHC-P: Human gastric cancer tissue.

Properties

Form	Liquid
Storage instructions	Shipped at 4°C. Store at +4°C short term (1-2 weeks). Upon delivery aliquot. Store at -20°C long term. Avoid freeze / thaw cycle.
Storage buffer	pH: 7.00 Preservative: 0.01% Thimerosal (merthiolate) Constituents: PBS, 20% Glycerol
Purity	Immunogen affinity purified
Clonality	Polyclonal
Isotype	IgG

Applications

Our [Abpromise guarantee](#) covers the use of **ab227949** in the following tested applications.

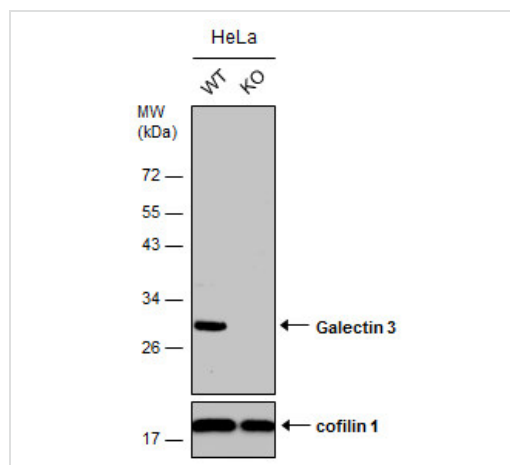
The application notes include recommended starting dilutions; optimal dilutions/concentrations should be determined by the end user.

Application	Abreviews	Notes
WB		1/500 - 1/3000. Predicted molecular weight: 26 kDa.
IHC-P		1/100 - 1/1000.

Target

Function	Galactose-specific lectin which binds IgE. May mediate with the alpha-3, beta-1 integrin the stimulation by CSPG4 of endothelial cells migration. Together with DMBT1, required for terminal differentiation of columnar epithelial cells during early embryogenesis.
Tissue specificity	A major expression is found in the colonic epithelium. It is also abundant in the activated macrophages.
Sequence similarities	Contains 1 galectin domain.
Cellular localization	Nucleus. Cytoplasmic in adenomas and carcinomas. May be secreted by a non-classical secretory pathway and associate with the cell surface.

Images



Western blot - Anti-Galectin 3 antibody - C-terminal (ab227949)

All lanes : Anti-Galectin 3 antibody - C-terminal (ab227949) at 1/500 dilution

Lane 1 : WT HeLa cell extract

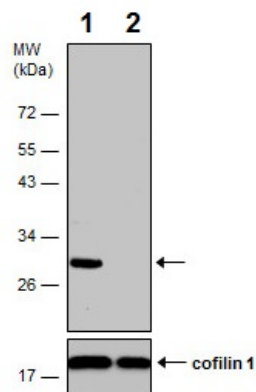
Lane 2 : Galectin 3 Knockout HeLa cell extracts

Lysates/proteins at 30 µg per lane.

Secondary

All lanes : HRP-conjugated anti-rabbit IgG

Predicted band size: 26 kDa



Western blot - Anti-Galectin 3 antibody - C-terminal (ab227949)

All lanes : Anti-Galectin 3 antibody - C-terminal (ab227949) at 1/500 dilution

Lane 1 : WT HeLa (epithelial cell line from cervix adenocarcinoma) whole cell extract

Lane 2 : Galectin 3 knockout HeLa (epithelial cell line from cervix adenocarcinoma) whole cell extract

Lysates/proteins at 30 µg per lane.

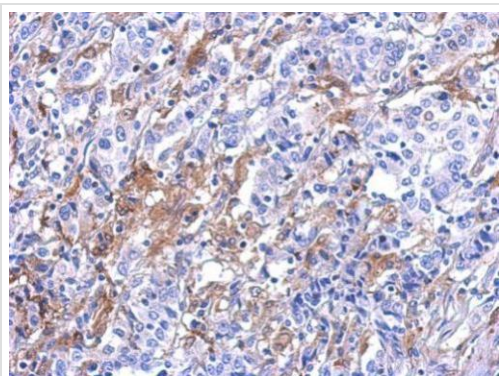
Secondary

All lanes : HRP-conjugated anti-rabbit IgG

Developed using the ECL technique.

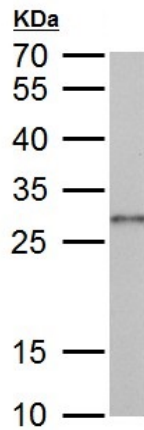
Predicted band size: 26 kDa

12% SDS-PAGE gel.



Immunohistochemistry (Formalin/PFA-fixed paraffin-embedded sections) - Anti-Galectin 3 antibody - C-terminal (ab227949)

Paraffin-embedded human gastric cancer tissue stained for Galectin 3 using ab227949 at 1/200 dilution in immunohistochemical analysis.

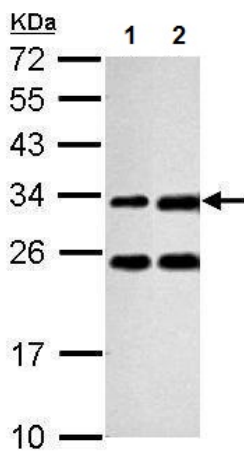


Western blot - Anti-Galectin 3 antibody - C-terminal (ab227949)

Anti-Galectin 3 antibody - C-terminal (ab227949) at 1/1000 dilution
+ Rat colon lysate at 50 µg

Predicted band size: 26 kDa

12% SDS-PAGE gel.



Western blot - Anti-Galectin 3 antibody - C-terminal (ab227949)

All lanes : Anti-Galectin 3 antibody - C-terminal (ab227949) at 1/1000 dilution

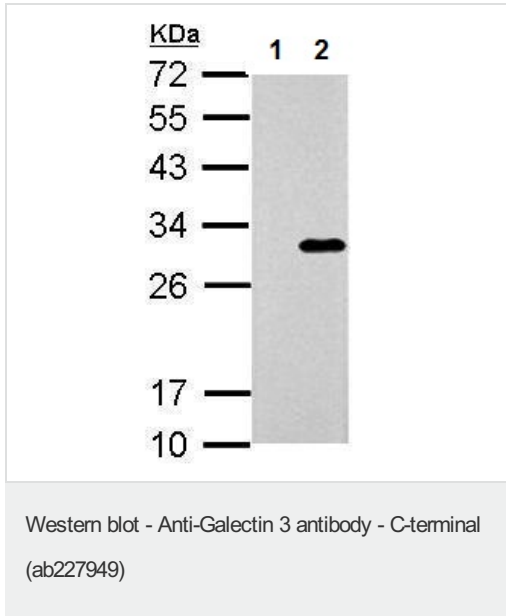
Lane 1 : A549 (human lung carcinoma cell line) whole cell lysate)

Lane 2 : HCT 116 (human colorectal carcinoma cell line) whole cell lysate)

Lysates/proteins at 30 µg per lane.

Predicted band size: 26 kDa

12% SDS PAGE gel.



All lanes : Anti-Galectin 3 antibody - C-terminal (ab227949) at 1/1000 dilution

Lane 1 : Non-transfected HEK-293T (human epithelial cell line from embryonic kidney transformed with large T antigen) whole cell lysate

Lane 2 : HEK-293T (human epithelial cell line from embryonic kidney transformed with large T antigen) transfected with Galectin 3, whole cell lysate

Lysates/proteins at 30 µg per lane.

Predicted band size: 26 kDa

12% SDS PAGE gel.

Please note: All products are "FOR RESEARCH USE ONLY. NOT FOR USE IN DIAGNOSTIC PROCEDURES"

Our Abpromise to you: Quality guaranteed and expert technical support

- Replacement or refund for products not performing as stated on the datasheet
- Valid for 12 months from date of delivery
- Response to your inquiry within 24 hours
- We provide support in Chinese, English, French, German, Japanese and Spanish
- Extensive multi-media technical resources to help you
- We investigate all quality concerns to ensure our products perform to the highest standards

If the product does not perform as described on this datasheet, we will offer a refund or replacement. For full details of the Abpromise, please visit <https://www.abcam.com/abpromise> or contact our technical team.

Terms and conditions

- Guarantee only valid for products bought direct from Abcam or one of our authorized distributors