


## Product datasheet

# Anti-gamma Tubulin antibody ab11317

★★★★☆ 16 Abreviews 88 References 4 Images

### Overview

---

<b>Product name</b>	Anti-gamma Tubulin antibody
<b>Description</b>	Rabbit polyclonal to gamma Tubulin
<b>Host species</b>	Rabbit
<b>Tested applications</b>	<b>Suitable for:</b> ICC/IF, WB
<b>Species reactivity</b>	<b>Reacts with:</b> Mouse, Rat, Human, Chinese hamster <b>Predicted to work with:</b> Drosophila melanogaster, Schizosaccharomyces pombe, Sea urchin 
<b>Immunogen</b>	Synthetic peptide: EEFATEGTDRKDVFFY-C conjugated to KLH, corresponding to N terminal amino acids 38-53 of Human gamma Tubulin <a href="#">Run BLAST with</a> <a href="#">Run BLAST with</a>
<b>Positive control</b>	ICC/IF: Rat2 cells; NIH3T3 cells; HeLa cells. WB: Rat2 cell lysate; A431 cell lysate; HeLa cell lysate; Jurkat cell lysate; U87 cell lysate; C2C12 cell lysate; CHO cell lysate; NIH3T3 cell lysate.
<b>General notes</b>	The Life Science industry has been in the grips of a reproducibility crisis for a number of years. Abcam is leading the way in addressing this with our range of recombinant monoclonal antibodies and knockout edited cell lines for gold-standard validation. Please check that this product meets your needs before purchasing.  If you have any questions, special requirements or concerns, please send us an inquiry and/or contact our Support team ahead of purchase. Recommended alternatives for this product can be found below, along with publications, customer reviews and Q&As

### Properties

---

<b>Form</b>	Liquid
<b>Storage instructions</b>	Shipped at 4°C. Upon delivery aliquot and store at -20°C or -80°C. Avoid repeated freeze / thaw cycles.
<b>Storage buffer</b>	pH: 7.40 Preservative: 0.097% Sodium azide Constituents: 0.0268% PBS, 0.42% Potassium phosphate, 0.87% Sodium chloride
<b>Purity</b>	IgG fraction
<b>Clonality</b>	Polyclonal

Isotype

IgG

## Applications

### The Abpromise guarantee

Our [Abpromise guarantee](#) covers the use of ab11317 in the following tested applications.

The application notes include recommended starting dilutions; optimal dilutions/concentrations should be determined by the end user.

Application	Abreviews	Notes
ICC/IF	★★★★☆ (5)	1/5000. It is recommended to fix cells with methanol/acetone.
WB	★★★★☆ (7)	1/1000. Detects a band of approximately 48 kDa. This concentration was determined for A431 cultured cells extract. Block with 5% BSA in TBST (not milk). Detects a band of approximately 48 kDa. Additional bands can occasionally be seen.

## Target

### Function

Tubulin is the major constituent of microtubules. Gamma tubulin is found at microtubule organizing centers (MTOC) such as the spindle poles or the centrosome. Pericentriolar matrix component that regulates alpha/beta tubulin minus-end nucleation, centrosome duplication and spindle formation.

### Sequence similarities

Belongs to the tubulin family.

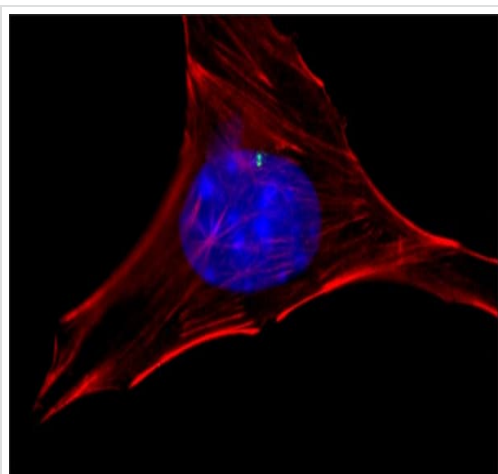
### Post-translational modifications

Phosphorylation at Ser-131 by BRSK1 regulates centrosome duplication, possibly by mediating relocation of gamma-tubulin and its associated proteins from the cytoplasm to the centrosome.

### Cellular localization

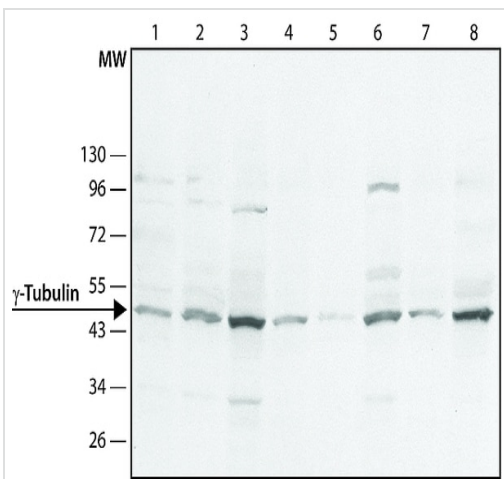
Cytoplasm > cytoskeleton > centrosome.

## Images



Immunocytochemistry/Immunofluorescence analysis of NIH3T3 cells labelling gamma Tubulin (green) with ab11317 at a dilution of 1/1500. A Atto448 dye conjugated goat anti-rabbit IgG was used as the secondary antibody. Actin was stained with phalloidin rhodamine conjugate (red). Nuclear staining with DAPI (blue).

Immunocytochemistry/ Immunofluorescence - Anti-gamma Tubulin antibody (ab11317)



Western blot - Anti-gamma Tubulin antibody (ab11317)

**All lanes** : Anti-gamma Tubulin antibody (ab11317) at 1/1000 dilution

**Lane 1** : A431 cell lysate

**Lane 2** : HeLa cell lysate

**Lane 3** : Jurkat cell lysate

**Lane 4** : C2C12 cell lysate

**Lane 5** : Rat2 cell lysate

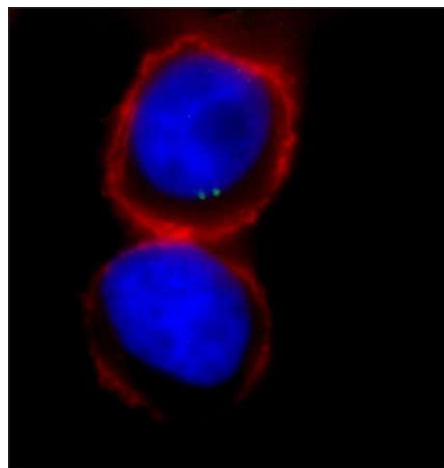
**Lane 6** : U87 cell lysate

**Lane 7** : NIH3T3 cell lysate

**Lane 8** : CHO cell lysate

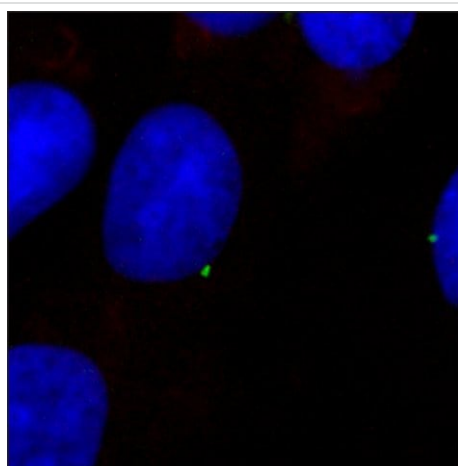
**Secondary**

**All lanes** : Peroxidase-conjugated goat anti-rabbit IgG



Immunocytochemistry/ Immunofluorescence - Anti-gamma Tubulin antibody (ab11317)

Immunocytochemistry/Immunofluorescence analysis of HeLa cells labelling gamma Tubulin (green) with ab11317 at a dilution of 1/1500. A Atto448 dye conjugated goat anti-rabbit IgG was used as the secondary antibody. Actin was stained with phalloidin rhodamine conjugate (red). Nuclear staining with DAPI (blue).



Immunocytochemistry/ Immunofluorescence - Anti-gamma Tubulin antibody (ab11317)

Immunocytochemistry/Immunofluorescence analysis of Rat2 cells labelling gamma Tubulin (green) with ab11317 at a dilution of 1/1500. A Atto448 dye conjugated goat anti-rabbit IgG was used as the secondary antibody. Actin was stained with phalloidin rhodamine conjugate (red). Nuclear staining with DAPI (blue).

**Please note:** All products are "FOR RESEARCH USE ONLY. NOT FOR USE IN DIAGNOSTIC PROCEDURES"

### **Our Abpromise to you: Quality guaranteed and expert technical support**

---

- Replacement or refund for products not performing as stated on the datasheet
- Valid for 12 months from date of delivery
- Response to your inquiry within 24 hours
  
- We provide support in Chinese, English, French, German, Japanese and Spanish
- Extensive multi-media technical resources to help you
- We investigate all quality concerns to ensure our products perform to the highest standards

If the product does not perform as described on this datasheet, we will offer a refund or replacement. For full details of the Abpromise, please visit <https://www.abcam.com/abpromise> or contact our technical team.

### **Terms and conditions**

---

- Guarantee only valid for products bought direct from Abcam or one of our authorized distributors