


## Product datasheet

# Anti-gamma Tubulin antibody [EPR13872] - Centrosome Marker ab180595

Recombinant RabMAb

★★★★★ 1 Abreviews 1 References 3 Images

### Overview

<b>Product name</b>	Anti-gamma Tubulin antibody [EPR13872] - Centrosome Marker
<b>Description</b>	Rabbit monoclonal [EPR13872] to gamma Tubulin - Centrosome Marker
<b>Host species</b>	Rabbit
<b>Tested applications</b>	<b>Suitable for:</b> WB, IHC-P, Flow Cyt
<b>Species reactivity</b>	<b>Reacts with:</b> Mouse, Rat, Human <b>Predicted to work with:</b> Cow, Dog, Drosophila melanogaster, a wide range of other species 
<b>Immunogen</b>	Synthetic peptide within Human gamma Tubulin aa 1-100. The exact sequence is proprietary. Database link: <a href="#">Q9NRH3</a>
<b>Positive control</b>	Hela, Jurkat, A431 or 293 lysate, Human colon tissue or Jurkat cells.
<b>General notes</b>	Our RabMAb <sup>®</sup> technology is a patented hybridoma-based technology for making rabbit monoclonal antibodies. For details on our patents, please refer to <a href="#">RabMAb<sup>®</sup> patents</a> .  This product is a <a href="#">recombinant rabbit monoclonal antibody</a> .

### Properties

<b>Form</b>	Liquid
<b>Storage instructions</b>	Shipped at 4°C. Store at +4°C short term (1-2 weeks). Upon delivery aliquot. Store at -20°C long term. Avoid freeze / thaw cycle.
<b>Storage buffer</b>	pH: 7.2 Preservative: 0.01% Sodium azide Constituents: 50% Glycerol, 0.05% BSA, PBS
<b>Purity</b>	Protein A purified
<b>Clonality</b>	Monoclonal
<b>Clone number</b>	EPR13872
<b>Isotype</b>	IgG

## Applications

Our [Abpromise guarantee](#) covers the use of **ab180595** in the following tested applications.

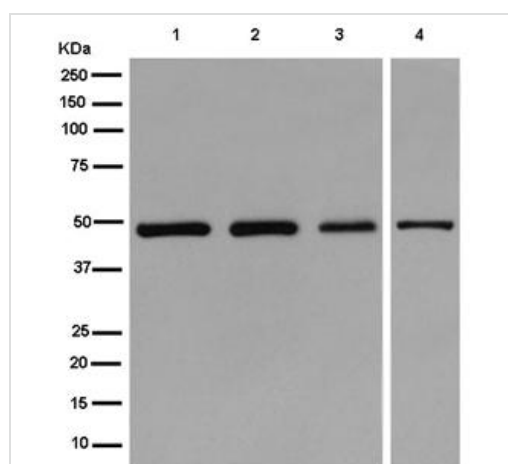
The application notes include recommended starting dilutions; optimal dilutions/concentrations should be determined by the end user.

Application	Abreviews	Notes
WB		1/1000 - 1/2000. Detects a band of approximately 48 kDa.
IHC-P		1/50 - 1/100. Heat up to 98 °C, below boiling, and then let cool for 10-20 min.
Flow Cyt		1/140. <a href="#">ab172730</a> - Rabbit monoclonal IgG, is suitable for use as an isotype control with this antibody.

## Target

<b>Function</b>	Tubulin is the major constituent of microtubules. Gamma tubulin is found at microtubule organizing centers (MTOC) such as the spindle poles or the centrosome. Pericentriolar matrix component that regulates alpha/beta tubulin minus-end nucleation, centrosome duplication and spindle formation.
<b>Sequence similarities</b>	Belongs to the tubulin family.
<b>Post-translational modifications</b>	Phosphorylation at Ser-131 by BRSK1 regulates centrosome duplication, possibly by mediating relocation of gamma-tubulin and its associated proteins from the cytoplasm to the centrosome.
<b>Cellular localization</b>	Cytoplasm > cytoskeleton > centrosome.

## Images



Western blot - Anti-gamma Tubulin antibody [EPR13872] - Centrosome Marker (ab180595)

**All lanes** : Anti-gamma Tubulin antibody [EPR13872] - Centrosome Marker (ab180595) at 1/2000 dilution

**Lane 1** : HeLa lysate

**Lane 2** : Jurkat lysate

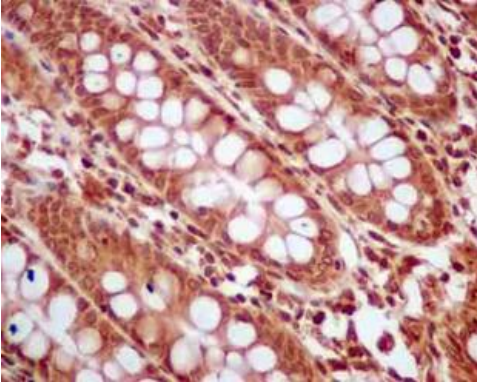
**Lane 3** : A431 lysate

**Lane 4** : 293 lysate

Lysates/proteins at 20 µg per lane.

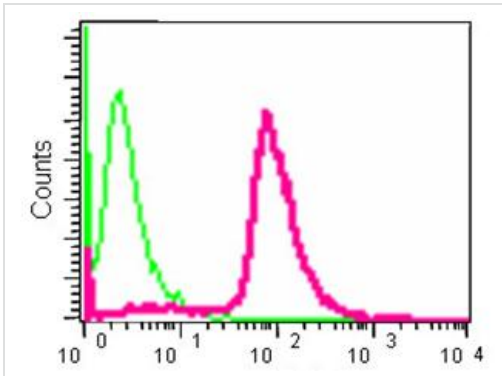
### Secondary

**All lanes** : Goat Anti-Rabbit IgG (H+L) Peroxidase conjugated at 1/1000 dilution



Immunohistochemical analysis of paraffin embedded Human colon tissue labeling gamma Tubulin with ab180595 at a 1/100 dilution. Prediluted ImmunoHistoprobe HRP Polymer for Rabbit IgG secondary used. Counterstained with Hematoxylin.

Immunohistochemistry (Formalin/PFA-fixed paraffin-embedded sections) - Anti-gamma Tubulin antibody [EPR13872] - Centrosome Marker (ab180595)



Flow cytometry analysis of Jurkat cells using ab180595 at a 1/140 dilution (red) or a rabbit monoclonal IgG (negative) (green). Goat anti rabbit IgG (FITC) secondary used at a 1/150 dilution.

Flow Cytometry - Anti-gamma Tubulin antibody [EPR13872] - Centrosome Marker (ab180595)

**Please note:** All products are "FOR RESEARCH USE ONLY AND ARE NOT INTENDED FOR DIAGNOSTIC OR THERAPEUTIC USE"

### Our Abpromise to you: Quality guaranteed and expert technical support

- Replacement or refund for products not performing as stated on the datasheet
- Valid for 12 months from date of delivery
- Response to your inquiry within 24 hours
- We provide support in Chinese, English, French, German, Japanese and Spanish
- Extensive multi-media technical resources to help you
- We investigate all quality concerns to ensure our products perform to the highest standards

If the product does not perform as described on this datasheet, we will offer a refund or replacement. For full details of the Abpromise, please visit <https://www.abcam.com/abpromise> or contact our technical team.

### Terms and conditions

- Guarantee only valid for products bought direct from Abcam or one of our authorized distributors