


Product datasheet

Anti-GAP43 antibody [EP890Y] (HRP) ab196325

Recombinant **RabMAb**

1 Image

Overview

Product name	Anti-GAP43 antibody [EP890Y] (HRP)
Description	Rabbit monoclonal [EP890Y] to GAP43 (HRP)
Host species	Rabbit
Conjugation	HRP
Tested applications	Suitable for: IHC-P
Species reactivity	Reacts with: Human Predicted to work with: Mouse, Rat 
Immunogen	Synthetic peptide within Human GAP43 (C terminal). The exact sequence is proprietary.
Positive control	IHC-P: Normal human cerebellum tissue.
General notes	Our RabMAb [®] technology is a patented hybridoma-based technology for making rabbit monoclonal antibodies. For details on our patents, please refer to RabMAb[®] patents .

Properties

Form	Liquid
Storage instructions	Shipped at 4°C. Store at +4°C short term (1-2 weeks). Upon delivery aliquot. Store at -20°C. Stable for 12 months at -20°C. Store In the Dark.
Storage buffer	pH: 7.40 Preservative: 0.1% Proclin Constituents: PBS, 30% Glycerol, 1% BSA
Purity	Protein A purified
Clonality	Monoclonal
Clone number	EP890Y
Isotype	IgG

Applications

Our [Abpromise guarantee](#) covers the use of **ab196325** in the following tested applications.

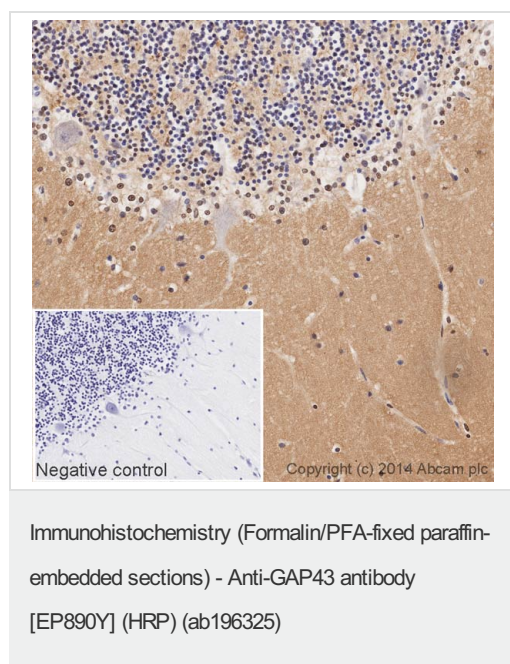
The application notes include recommended starting dilutions; optimal dilutions/concentrations should be determined by the end user.

Application	Abreviews	Notes
IHC-P		1/100. Perform heat mediated antigen retrieval before commencing with IHC staining protocol.

Target

Function	This protein is associated with nerve growth. It is a major component of the motile "growth cones" that form the tips of elongating axons.
Sequence similarities	Belongs to the neuromodulin family. Contains 1 IQ domain.
Post-translational modifications	Phosphorylation of this protein by a protein kinase C is specifically correlated with certain forms of synaptic plasticity.
Cellular localization	Cell membrane. Cell projection > growth cone membrane. Cell junction > synapse. Cytoplasmic surface of growth cone and synaptic plasma membranes.

Images



IHC image of GAP43 staining in a section of formalin-fixed paraffin-embedded normal human cerebellum, performed on a Leica BOND. The section was pre-treated using heat mediated antigen retrieval with sodium citrate buffer (pH6, epitope retrieval solution 1) for 20mins. The section was then incubated with ab196325 at 1/100 dilution, for 15 mins at room temperature. DAB was used as the chromogen. The section was then counterstained with haematoxylin and mounted with DPX. The inset negative control image is taken from an identical assay without primary antibody.

For other IHC staining systems (automated and non-automated) customers should optimize variable parameters such as antigen retrieval conditions, primary antibody concentration and antibody incubation times.

Please note: All products are "FOR RESEARCH USE ONLY. NOT FOR USE IN DIAGNOSTIC PROCEDURES"

Our Abpromise to you: Quality guaranteed and expert technical support

- Replacement or refund for products not performing as stated on the datasheet
- Valid for 12 months from date of delivery
- Response to your inquiry within 24 hours

- We provide support in Chinese, English, French, German, Japanese and Spanish
- Extensive multi-media technical resources to help you
- We investigate all quality concerns to ensure our products perform to the highest standards

If the product does not perform as described on this datasheet, we will offer a refund or replacement. For full details of the Abpromise, please visit <https://www.abcam.com/abpromise> or contact our technical team.

Terms and conditions

- Guarantee only valid for products bought direct from Abcam or one of our authorized distributors