



Product datasheet

Anti-Gas1 antibody ab236618

4 Images

Overview

<b>Product name</b>	Anti-Gas1 antibody
<b>Description</b>	Rabbit polyclonal to Gas1
<b>Host species</b>	Rabbit
<b>Tested applications</b>	<b>Suitable for:</b> WB, IHC-P, ICC/IF
<b>Species reactivity</b>	<b>Reacts with:</b> Human
<b>Immunogen</b>	Recombinant fragment corresponding to Human Gas1 aa 248-318. Sequence:  LGNGPGSSGSDGGLDDYDEDYDDEQRTGGAGGEQ PLDDDDGVPHPPRPG SGAAASGGRGDLPYGPGRRSS  Database link: <a href="#">P54826</a>  <div style="text-align: right;">  <a href="#">Run BLAST with</a>                   <a href="#">Run BLAST with</a> </div>
<b>Positive control</b>	WB: SH-SY5Y and HEK-293 whole cell lysate. ICC/IF: HeLa cells. IHC-P: Human pancreas and skin tissue.

Properties

<b>Form</b>	Liquid
<b>Storage instructions</b>	Shipped at 4°C. Store at +4°C short term (1-2 weeks). Upon delivery aliquot. Store at -20°C long term. Avoid freeze / thaw cycle.
<b>Storage buffer</b>	pH: 7.4 Preservative: 0.03% Proclin Constituents: 50% Glycerol, PBS
<b>Purity</b>	Protein G purified
<b>Purification notes</b>	Purity >95%
<b>Clonality</b>	Polyclonal
<b>Isotype</b>	IgG

Applications

Our [Abpromise guarantee](#) covers the use of **ab236618** in the following tested applications.

The application notes include recommended starting dilutions; optimal dilutions/concentrations should be determined by the end user.

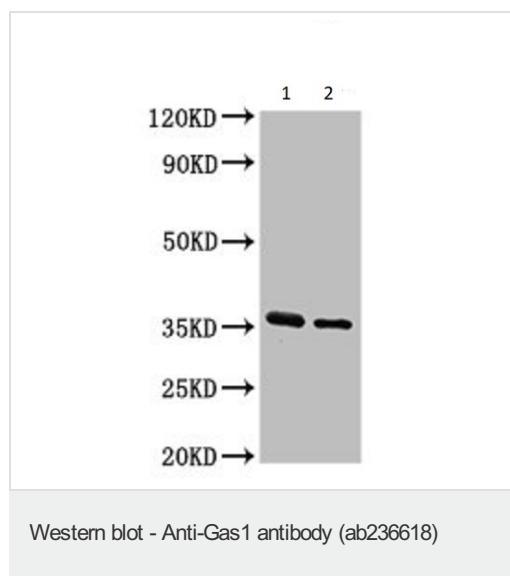
Application	Abreviews	Notes
WB		1/500 - 1/5000.
IHC-P		1/20 - 1/200.
ICC/IF		1/50 - 1/200.

## Target

**Function** Specific growth arrest protein involved in growth suppression. Blocks entry to S phase. Prevents cycling of normal and transformed cells.

**Cellular localization** Cell membrane.

## Images



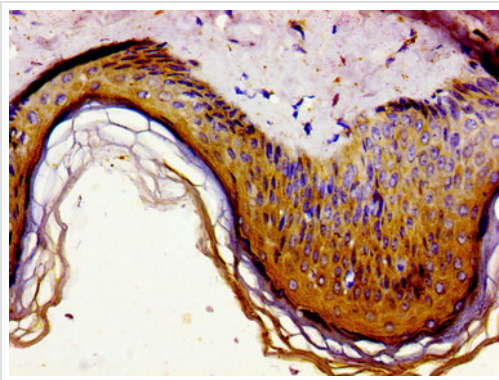
**All lanes** : Anti-Gas1 antibody (ab236618) at 1/500 dilution

**Lane 1** : SH-SH5Y (Human neuroblastoma cell line from bone marrow) whole cell lysate

**Lane 2** : HEK-293 (Human epithelial cell line from embryonic kidney) whole cell lysate

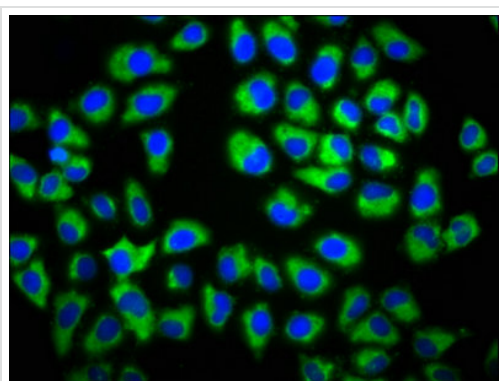
### Secondary

**All lanes** : Goat polyclonal to rabbit IgG at 1/50000 dilution



Immunohistochemistry (Formalin/PFA-fixed paraffin-embedded sections) - Anti-Gas1 antibody (ab236618)

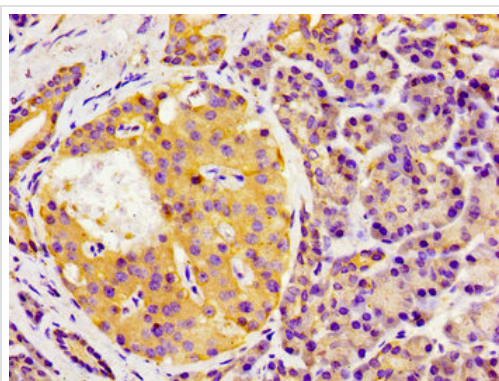
Paraffin-embedded human skin tissue stained for Gas1 with ab236618 at a 1/100 dilution in immunohistochemical analysis.



Immunocytochemistry/ Immunofluorescence - Anti-Gas1 antibody (ab236618)

HeLa (Human epithelial cell line from cervix adenocarcinoma) cells stained for Gas1 (Green) using ab236618 at a 1/133 dilution in ICC/IF.

The cells were fixed in 4% formaldehyde, permeabilized using 0.2% Triton X-100 and blocked in 10% normal goat serum. The cells were then incubated with the primary antibody overnight at 4°C. Secondary used is an Alexa-Fluor<sup>®</sup>488-conjugated Goat Anti-Rabbit IgG (H+L). Counterstained with DAPI.



Immunohistochemistry (Formalin/PFA-fixed paraffin-embedded sections) - Anti-Gas1 antibody (ab236618)

Paraffin-embedded human pancreas tissue stained for Gas1 with ab236618 at a 1/100 dilution in immunohistochemical analysis.

**Please note:** All products are "FOR RESEARCH USE ONLY. NOT FOR USE IN DIAGNOSTIC PROCEDURES"

**Our Abpromise to you: Quality guaranteed and expert technical support**

- Replacement or refund for products not performing as stated on the datasheet
- Valid for 12 months from date of delivery
- Response to your inquiry within 24 hours
  
- We provide support in Chinese, English, French, German, Japanese and Spanish
- Extensive multi-media technical resources to help you
- We investigate all quality concerns to ensure our products perform to the highest standards

If the product does not perform as described on this datasheet, we will offer a refund or replacement. For full details of the Abpromise, please visit <https://www.abcam.com/abpromise> or contact our technical team.

### **Terms and conditions**

---

- Guarantee only valid for products bought direct from Abcam or one of our authorized distributors