


Product datasheet

Anti-GAS2L1 antibody ab96260

1 Image

Overview

Product name	Anti-GAS2L1 antibody
Description	Rabbit polyclonal to GAS2L1
Host species	Rabbit
Tested applications	Suitable for: WB
Species reactivity	Reacts with: Human Predicted to work with: Mouse, Rat, Cow 
Immunogen	Recombinant fragment containing a sequence corresponding to a region within amino acids 71-325 of Human GAS2L1 (NP_006469).
Positive control	A431 and 293T cell lysates

Properties

Form	Liquid
Storage instructions	Shipped at 4°C. Upon delivery aliquot and store at -20°C or -80°C. Avoid repeated freeze / thaw cycles.
Storage buffer	pH: 7.00 Preservative: 0.01% Thimerosal (merthiolate) Constituents: 1.21% Tris, 0.75% Glycine, 10% Glycerol (glycerin, glycerine)
Purity	Immunogen affinity purified
Clonality	Polyclonal
Isotype	IgG

Applications

Our [Abpromise guarantee](#) covers the use of **ab96260** in the following tested applications.

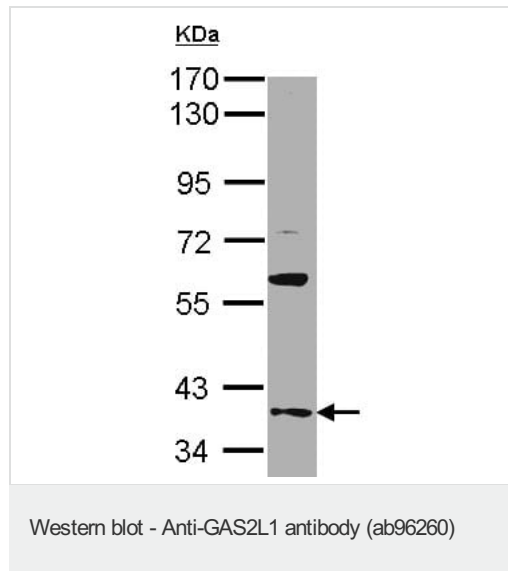
The application notes include recommended starting dilutions; optimal dilutions/concentrations should be determined by the end user.

Application	Abreviews	Notes
WB		1/500 - 1/3000. Predicted molecular weight: Isoform 1, 73 ; Isoform 2, 37 kDa.

Target

Function	Seems to be involved in the cross-linking of microtubules and microfilaments.
Sequence similarities	Belongs to the GAS2 family. Contains 1 CH (calponin-homology) domain. Contains 1 GAR domain.
Cellular localization	Cytoplasm > cytoskeleton.

Images



Anti-GAS2L1 antibody (ab96260) at 1/500 dilution + A431 whole cell lysate at 30 µg

Predicted band size: Isoform 1, 73 ; Isoform 2, 37 kDa

7.5% SDS-PAGE

Please note: All products are "FOR RESEARCH USE ONLY. NOT FOR USE IN DIAGNOSTIC PROCEDURES"

Our Abpromise to you: Quality guaranteed and expert technical support

- Replacement or refund for products not performing as stated on the datasheet
- Valid for 12 months from date of delivery
- Response to your inquiry within 24 hours
- We provide support in Chinese, English, French, German, Japanese and Spanish
- Extensive multi-media technical resources to help you
- We investigate all quality concerns to ensure our products perform to the highest standards

If the product does not perform as described on this datasheet, we will offer a refund or replacement. For full details of the Abpromise, please visit <https://www.abcam.com/abpromise> or contact our technical team.

Terms and conditions

- Guarantee only valid for products bought direct from Abcam or one of our authorized distributors