


Product datasheet

Anti-GBAS antibody ab153833

1 References 3 Images

Overview

<b>Product name</b>	Anti-GBAS antibody
<b>Description</b>	Rabbit polyclonal to GBAS
<b>Host species</b>	Rabbit
<b>Tested applications</b>	<b>Suitable for:</b> WB, IHC-P
<b>Species reactivity</b>	<b>Reacts with:</b> Mouse, Human <b>Predicted to work with:</b> Rat, Cow 
<b>Immunogen</b>	Recombinant fragment corresponding to a region within amino acids 1-225 of Human GBAS (Uniprot ID O75323)
<b>Positive control</b>	A549, H1299 and HCT116 whole cell lysate; Colon cancer tissue; Human muscle tissue.
<b>General notes</b>	<p>The Life Science industry has been in the grips of a reproducibility crisis for a number of years. Abcam is leading the way in addressing this with our range of recombinant monoclonal antibodies and knockout edited cell lines for gold-standard validation. Please check that this product meets your needs before purchasing.</p> <p>If you have any questions, special requirements or concerns, please send us an inquiry and/or contact our Support team ahead of purchase. Recommended alternatives for this product can be found below, along with publications, customer reviews and Q&amp;As</p>

Properties

<b>Form</b>	Liquid
<b>Storage instructions</b>	Shipped at 4°C. Upon delivery aliquot. Store at -20°C or -80°C. Avoid freeze / thaw cycle.
<b>Storage buffer</b>	pH: 7.00 Preservative: 0.01% Thimerosal (merthiolate) Constituents: 78.99% PBS, 1% BSA, 20% Glycerol (glycerin, glycerine)
<b>Purity</b>	Immunogen affinity purified
<b>Clonality</b>	Polyclonal
<b>Isotype</b>	IgG

Applications

## The Abpromise guarantee

Our [Abpromise guarantee](#) covers the use of ab153833 in the following tested applications.

The application notes include recommended starting dilutions; optimal dilutions/concentrations should be determined by the end user.

Application	Abreviews	Notes
WB		1/500 - 1/3000. Predicted molecular weight: 34 kDa.
IHC-P		1/100 - 1/1000.

## Target

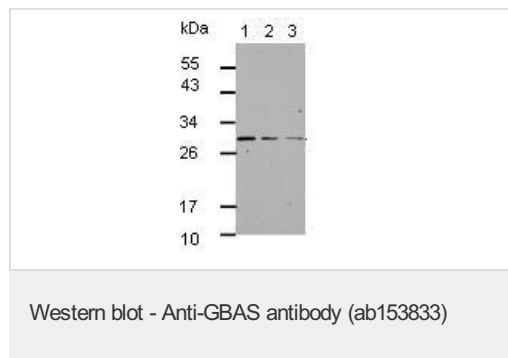
### Tissue specificity

Widely expressed. Most abundant in heart and skeletal muscle.

### Sequence similarities

Belongs to the NipSnap family.

## Images



**All lanes :** Anti-GBAS antibody (ab153833) at 1/1000 dilution

**Lane 1 :** A549 cell lysate

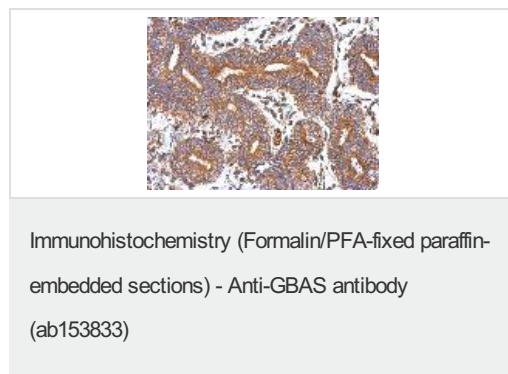
**Lane 2 :** H1299 cell lysate

**Lane 3 :** HCT116 cell lysate

**Predicted band size:** 34 kDa

12% SDS PAGE

30 µg of whole cell lysate



Immunohistochemical analysis of paraffin-embedded human Colon cancer tissue, using ab153833 antibody at 1:500 dilution.



Immunohistochemical analysis of paraffin-embedded mouse Muscle, using ab153833 antibody at 1:500 dilution.

Immunohistochemistry (Formalin/PFA-fixed paraffin-embedded sections) - Anti-GBAS antibody (ab153833)

**Please note:** All products are "FOR RESEARCH USE ONLY. NOT FOR USE IN DIAGNOSTIC PROCEDURES"

### **Our Abpromise to you: Quality guaranteed and expert technical support**

---

- Replacement or refund for products not performing as stated on the datasheet
- Valid for 12 months from date of delivery
- Response to your inquiry within 24 hours
- We provide support in Chinese, English, French, German, Japanese and Spanish
- Extensive multi-media technical resources to help you
- We investigate all quality concerns to ensure our products perform to the highest standards

If the product does not perform as described on this datasheet, we will offer a refund or replacement. For full details of the Abpromise, please visit <https://www.abcam.com/abpromise> or contact our technical team.

### **Terms and conditions**

---

- Guarantee only valid for products bought direct from Abcam or one of our authorized distributors