

Product datasheet

Anti-GC1q R antibody ab225621

2 Images

Overview

Product name	Anti-GC1q R antibody
Description	Rabbit polyclonal to GC1q R
Host species	Rabbit
Tested applications	Suitable for: WB, IHC-P Unsuitable for: IP
Species reactivity	Reacts with: Human
Immunogen	Synthetic peptide within Human GC1q R aa 50-100. The exact sequence is proprietary. (NP_001203.1). Database link: Q07021
Positive control	WB: HeLa whole cell lysate. IHC-P: Human lung carcinoma tissue.

Properties

Form	Liquid
Storage instructions	Shipped at 4°C. Store at +4°C short term (1-2 weeks). Upon delivery aliquot. Store at -20°C long term. Avoid freeze / thaw cycle.
Storage buffer	Preservative: 0.09% Sodium azide Constituents: 0.1% BSA, Tris buffered saline
Purity	Immunogen affinity purified
Purification notes	ab225621 was affinity purified using an epitope specific to GC1q R immobilized on solid support.
Clonality	Polyclonal
Isotype	IgG

Applications

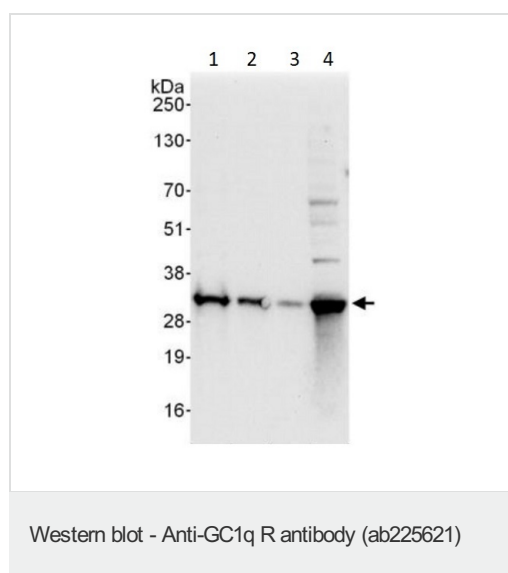
Our [Abpromise guarantee](#) covers the use of **ab225621** in the following tested applications.

The application notes include recommended starting dilutions; optimal dilutions/concentrations should be determined by the end user.

Application	Abreviews	Notes
WB		1/2000 - 1/10000. Predicted molecular weight: 31 kDa.

Application	Abreviews	Notes
IHC-P		1/200 - 1/1000. Perform heat mediated antigen retrieval with citrate buffer pH 6 before commencing with IHC staining protocol.
Application notes		Is unsuitable for IP.
Target		
Function		Binds to the globular "heads" of C1Q thus inhibiting C1 activation.
Sequence similarities		Belongs to the MAM33 family.
Cellular localization		Mitochondrion matrix. Nucleus. Might also be nuclear in some cell types.

Images



All lanes : Anti-GC1q R antibody (ab225621) at 0.04 µg/ml

Lane 1 : HeLa (human epithelial cell line from cervix adenocarcinoma) whole cell lysate at 50 µg

Lane 2 : HeLa (human epithelial cell line from cervix adenocarcinoma) whole cell lysate at 15 µg

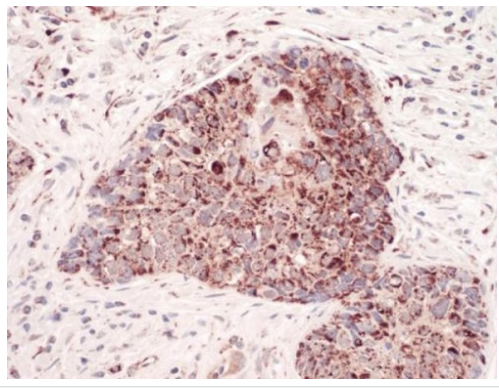
Lane 3 : HeLa (human epithelial cell line from cervix adenocarcinoma) whole cell lysate at 5 µg

Lane 4 : HEK-293T (human epithelial cell line from embryonic kidney transformed with large T antigen) whole cell lysate at 50 µg

Developed using the ECL technique.

Predicted band size: 31 kDa

Exposure time: 10 seconds



Formalin fixed, paraffin embedded human lung carcinoma tissue stained for GC1q R with ab225621 at 1/200 dilution in immunohistochemical analysis.

Immunohistochemistry (Formalin/PFA-fixed paraffin-embedded sections) - Anti-GC1q R antibody (ab225621)

Please note: All products are "FOR RESEARCH USE ONLY. NOT FOR USE IN DIAGNOSTIC PROCEDURES"

Our Abpromise to you: Quality guaranteed and expert technical support

- Replacement or refund for products not performing as stated on the datasheet
- Valid for 12 months from date of delivery
- Response to your inquiry within 24 hours
- We provide support in Chinese, English, French, German, Japanese and Spanish
- Extensive multi-media technical resources to help you
- We investigate all quality concerns to ensure our products perform to the highest standards

If the product does not perform as described on this datasheet, we will offer a refund or replacement. For full details of the Abpromise, please visit <https://www.abcam.com/abpromise> or contact our technical team.

Terms and conditions

- Guarantee only valid for products bought direct from Abcam or one of our authorized distributors