

## Product datasheet

# Anti-GCDFP 15 antibody [SP185] - C-terminal ab183321

Recombinant RabMAb

[7 Images](#)

### Overview

<b>Product name</b>	Anti-GCDFP 15 antibody [SP185] - C-terminal
<b>Description</b>	Rabbit monoclonal [SP185] to GCDFP 15 - C-terminal
<b>Host species</b>	Rabbit
<b>Tested applications</b>	<b>Suitable for:</b> WB, IHC-P
<b>Species reactivity</b>	<b>Reacts with:</b> Human
<b>Immunogen</b>	Synthetic peptide within Human GCDFP 15 aa 100 to the C-terminus (C terminal). The exact sequence is proprietary. Database link: <a href="#">P12273</a>
<b>Positive control</b>	WB: T47D cell lysate IHC-P: Human breast carcinoma and breast ductal carcinoma tissues
<b>General notes</b>	<p>FOR RESEARCH USE ONLY. For commercial use, please contact <a href="mailto:partnerships@abcam.com">partnerships@abcam.com</a>.</p> <p>Cow: We have preliminary internal testing data to indicate this antibody may not react with these species. Please contact us for more information.</p> <p>This product is a recombinant monoclonal antibody, which offers several advantages including:</p> <ul style="list-style-type: none"> <li>- High batch-to-batch consistency and reproducibility</li> <li>- Improved sensitivity and specificity</li> <li>- Long-term security of supply</li> <li>- Animal-free production</li> </ul> <p>For more information <a href="#">see here</a>.</p> <p>Our RabMAb<sup>®</sup> technology is a patented hybridoma-based technology for making rabbit monoclonal antibodies. For details on our patents, please refer to <a href="#">RabMAb<sup>®</sup> patents</a>.</p> <p>Reproducibility is key to advancing scientific discovery and accelerating scientists' next breakthrough.</p> <p>Abcam is leading the way with our range of recombinant antibodies, knockout-validated antibodies and knockout cell lines, all of which support improved reproducibility.</p> <p>We are also planning to innovate the way in which we present recommended applications and species on our product datasheets, so that only applications &amp; species that have been tested in our own labs, our suppliers or by selected trusted collaborators are covered by our Abpromise<sup>™</sup> guarantee.</p> <p>In preparation for this, we have started to update the applications &amp; species that this product is Abpromise guaranteed for.</p>

We are also updating the applications & species that this product has been “predicted to work with,” however this information is not covered by our Abpromise guarantee.

Applications & species from publications and Abreviews that have not been tested in our own labs or in those of our suppliers are not covered by the Abpromise guarantee.

Please check that this product meets your needs before purchasing. If you have any questions, special requirements or concerns, please send us an inquiry and/or contact our Support team ahead of purchase. Recommended alternatives for this product can be found below, as well as customer reviews and Q&As.

## Properties

---

<b>Form</b>	Liquid
<b>Storage instructions</b>	Shipped at 4°C. Store at +4°C short term (1-2 weeks). Upon delivery aliquot. Store at -20°C long term. Avoid freeze / thaw cycle.
<b>Storage buffer</b>	pH: 7.20 Preservative: 0.1% Sodium azide Constituents: 1% BSA, PBS
<b>Purity</b>	Protein A purified
<b>Clonality</b>	Monoclonal
<b>Clone number</b>	SP185
<b>Isotype</b>	IgG

## Applications

---

Our [Abpromise guarantee](#) covers the use of **ab183321** in the following tested applications.

The application notes include recommended starting dilutions; optimal dilutions/concentrations should be determined by the end user.

Application	Abreviews	Notes
WB		1/400. Predicted molecular weight: 17 kDa.
IHC-P		1/100. Perform heat mediated antigen retrieval with Tris/EDTA buffer pH 9.0 before commencing with IHC staining protocol.

---

## Target

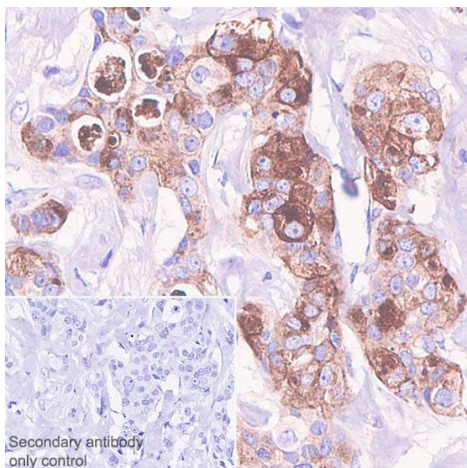
---

<b>Tissue specificity</b>	Expressed in pathological conditions of the mammary gland and in several exocrine tissues, such as the lacrimal, salivary, and sweat glands.
<b>Sequence similarities</b>	Belongs to the PIP family.
<b>Cellular localization</b>	Secreted.

---

## Images

---



Immunohistochemistry (Formalin/PFA-fixed paraffin-embedded sections) - Anti-GCDFP 15 antibody [SP185] - C-terminal (ab183321)

Immunohistochemistry (Formalin/PFA-fixed paraffin-embedded sections) analysis of Human breast carcinoma tissue sections labeling GCDFP 15 with ab183321 at 1/100 dilution (2.21  $\mu\text{g/ml}$ ). Heat mediated antigen retrieval with Tris-EDTA buffer (pH 9.0, epitope retrieval solution 2) for 10mins. Rabbit specific IHC polymer detection kit HRP/DAB (ab209101) was used as the secondary antibody. Hematoxylin was used as a counterstain. Positive staining on the human breast carcinoma, performed on a Leica Biosystems BOND™ RX instrument.

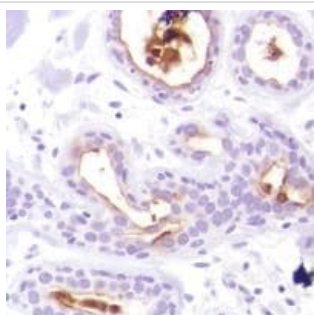
The section was incubated with ab183321 for 10 mins at room temperature.



Western blot - Anti-GCDFP 15 antibody [SP185] - C-terminal (ab183321)

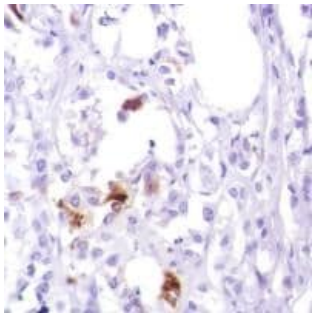
Anti-GCDFP 15 antibody [SP185] - C-terminal (ab183321) at 1/400 dilution + T47D cell lysate

**Predicted band size: 17 kDa**



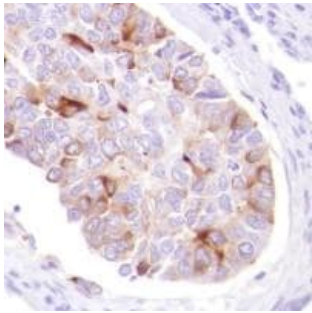
Immunohistochemistry (Formalin/PFA-fixed paraffin-embedded sections) - Anti-GCDFP 15 antibody [SP185] - C-terminal (ab183321)

Immunohistochemical analysis of paraffin-embedded Human breast carcinoma tissue labeling GCDFP with ab183321 at 1/100 dilution.



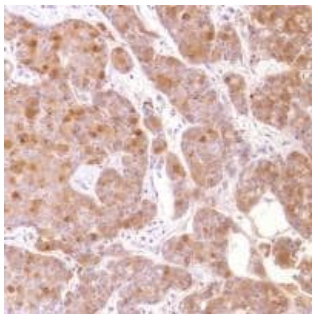
Immunohistochemistry (Formalin/PFA-fixed paraffin-embedded sections) - Anti-GCDFP 15 antibody [SP185] - C-terminal (ab183321)

Immunohistochemical analysis of paraffin-embedded Human breast ductal carcinoma tissue labeling GCDFP with ab183321 at 1/100 dilution.



Immunohistochemistry (Formalin/PFA-fixed paraffin-embedded sections) - Anti-GCDFP 15 antibody [SP185] - C-terminal (ab183321)

Immunohistochemical analysis of paraffin-embedded Human breast ductal carcinoma tissue labeling GCDFP with ab183321 at 1/100 dilution.



Immunohistochemistry (Formalin/PFA-fixed paraffin-embedded sections) - Anti-GCDFP 15 antibody [SP185] - C-terminal (ab183321)

Immunohistochemical analysis of paraffin-embedded Human breast carcinoma tissue labeling GCDFP with ab183321 at 1/100 dilution.

### Why choose a recombinant antibody?



**Research with confidence**  
Consistent and reproducible results



**Long-term and scalable supply**  
Recombinant technology



**Success from the first experiment**  
Confirmed specificity



**Ethical standards compliant**  
Animal-free production

Anti-GCDFP 15 antibody [SP185] - C-terminal  
(ab183321)

**Please note:** All products are "FOR RESEARCH USE ONLY. NOT FOR USE IN DIAGNOSTIC PROCEDURES"

### Our Abpromise to you: Quality guaranteed and expert technical support

---

- Replacement or refund for products not performing as stated on the datasheet
- Valid for 12 months from date of delivery
- Response to your inquiry within 24 hours
- We provide support in Chinese, English, French, German, Japanese and Spanish
- Extensive multi-media technical resources to help you
- We investigate all quality concerns to ensure our products perform to the highest standards

If the product does not perform as described on this datasheet, we will offer a refund or replacement. For full details of the Abpromise, please visit <https://www.abcam.com/abpromise> or contact our technical team.

### Terms and conditions

---

- Guarantee only valid for products bought direct from Abcam or one of our authorized distributors