



Product datasheet

Anti-GCP-3 antibody ab238484

1 Image

Overview

<b>Product name</b>	Anti-GCP-3 antibody
<b>Description</b>	Rabbit polyclonal to GCP-3
<b>Host species</b>	Rabbit
<b>Tested applications</b>	<b>Suitable for:</b> IHC-P
<b>Species reactivity</b>	<b>Reacts with:</b> Human
<b>Immunogen</b>	<p>Recombinant fragment corresponding to Human GCP-3 aa 1-250. Sequence:</p> <p>MATPDQKSPNVLLQNLCCRILGRSEADVAQQFQYAVR VIGSNFAPTVERD EFLVAEKIKKELIRQRREADAALFSELHRKLHSQGVLK NKWSILYLLLSL SEDP RRQPSKVSSYATLFAQALPRDAHSTPYYYARPQ TLPLSYQDRSAQS AQSSGSVGS SGISSIGLCALSGPAPAPQSLLPGQSNQ APGVGDCLRQQLG SRLAWTLTANQPSSQATT SKGVPSAVSRNMTRS RRE GDTGGTMEITEAAL</p> <p>Database link: <a href="#">Q96CW5</a></p> <p style="text-align: right;">  <a href="#">Run BLAST with</a>  <a href="#">Run BLAST with</a> </p>
<b>Positive control</b>	IHC-P: Human breast cancer tissue.
<b>General notes</b>	Previously labelled as Gamma-tubulin complex component 3.

Properties

<b>Form</b>	Liquid
<b>Storage instructions</b>	Shipped at 4°C. Store at +4°C short term (1-2 weeks). Upon delivery aliquot. Store at -20°C long term. Avoid freeze / thaw cycle.
<b>Storage buffer</b>	<p>pH: 7.30 Preservative: 0.02% Sodium azide Constituents: PBS, 50% Glycerol</p>
<b>Purity</b>	Immunogen affinity purified

**Clonality** Polyclonal

**Isotype** IgG

## Applications

Our [Abpromise guarantee](#) covers the use of **ab238484** in the following tested applications.

The application notes include recommended starting dilutions; optimal dilutions/concentrations should be determined by the end user.

Application	Abreviews	Notes
IHC-P		1/20 - 1/200.

## Target

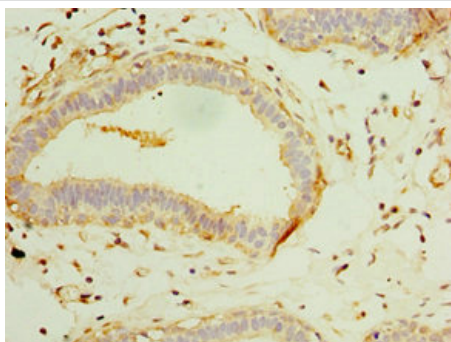
**Function** Gamma-tubulin complex is necessary for microtubule nucleation at the centrosome.

**Tissue specificity** Ubiquitously expressed.

**Sequence similarities** Belongs to the GCP family.

**Cellular localization** Cytoplasm > cytoskeleton > centrosome.

## Images



Paraffin-embedded human breast cancer tissue stained for GCP-3 using ab238484 at 1/100 dilution in immunohistochemical analysis.

Immunohistochemistry (Formalin/PFA-fixed paraffin-embedded sections) - Anti-GCP-3 antibody (ab238484)

**Please note:** All products are "FOR RESEARCH USE ONLY. NOT FOR USE IN DIAGNOSTIC PROCEDURES"

## Our Abpromise to you: Quality guaranteed and expert technical support

- Replacement or refund for products not performing as stated on the datasheet
- Valid for 12 months from date of delivery
- Response to your inquiry within 24 hours

- We provide support in Chinese, English, French, German, Japanese and Spanish
- Extensive multi-media technical resources to help you
- We investigate all quality concerns to ensure our products perform to the highest standards

If the product does not perform as described on this datasheet, we will offer a refund or replacement. For full details of the Abpromise, please visit <https://www.abcam.com/abpromise> or contact our technical team.

### **Terms and conditions**

---

- Guarantee only valid for products bought direct from Abcam or one of our authorized distributors