


Product datasheet

Anti-GDF15 antibody [7C12.B3.F2] ab106112

★★★★★ 1 Abreviews 2 Images

Overview

Product name	Anti-GDF15 antibody [7C12.B3.F2]
Description	Mouse monoclonal [7C12.B3.F2] to GDF15
Host species	Mouse
Specificity	ab106112 specifically reacts with an H variant sequence of GDF15 protein.
Tested applications	Suitable for: ICC, WB
Species reactivity	Reacts with: Human Predicted to work with: Chimpanzee, Macaque monkey 
Immunogen	A synthetic peptide corresponding to a region near the amino terminal end of Human GDF15 protein. A residue of cysteine was added to facilitate coupling to KLH.
Positive control	Pichia pastoris (yeast) whole cell lysate expressing recombinant GDF15 H variant with SUMO expression tag.
General notes	<p>Reproducibility is key to advancing scientific discovery and accelerating scientists' next breakthrough.</p> <p>Abcam is leading the way with our range of recombinant antibodies, knockout-validated antibodies and knockout cell lines, all of which support improved reproducibility.</p> <p>We are also planning to innovate the way in which we present recommended applications and species on our product datasheets, so that only applications & species that have been tested in our own labs, our suppliers or by selected trusted collaborators are covered by our Abpromise™ guarantee.</p> <p>In preparation for this, we have started to update the applications & species that this product is Abpromise guaranteed for.</p> <p>We are also updating the applications & species that this product has been “predicted to work with,” however this information is not covered by our Abpromise guarantee.</p> <p>Applications & species from publications and Abreviews that have not been tested in our own labs or in those of our suppliers are not covered by the Abpromise guarantee.</p> <p>Please check that this product meets your needs before purchasing. If you have any questions, special requirements or concerns, please send us an inquiry and/or contact our Support team ahead of purchase. Recommended alternatives for this product can be found below, as well as customer reviews and Q&As.</p>

Properties

Form	Liquid
Storage instructions	Shipped at 4°C. Upon delivery aliquot and store at -20°C or -80°C. Avoid repeated freeze / thaw cycles.
Storage buffer	Preservative: 0.01% Sodium azide Constituents: 0.42% Potassium phosphate, 0.88% Sodium chloride
Purity	Protein A purified
Purification notes	ab106112 was purified from concentrated tissue culture supernatant. It has been heated to 56°C for 30 minutes.
Clonality	Monoclonal
Clone number	7C12.B3.F2
Isotype	unknown

Applications

Our [Abpromise guarantee](#) covers the use of **ab106112** in the following tested applications.

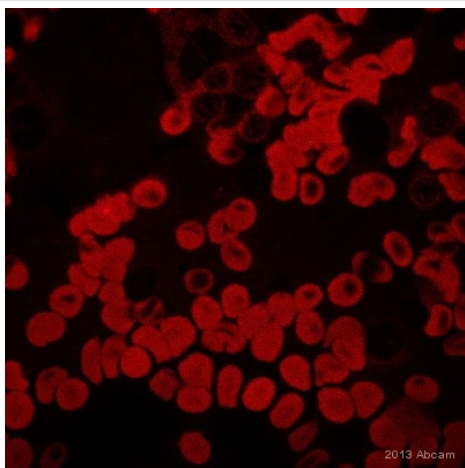
The application notes include recommended starting dilutions; optimal dilutions/concentrations should be determined by the end user.

Application	Abreviews	Notes
ICC		Use at an assay dependent concentration.
WB		1/1000. Predicted molecular weight: 34 kDa.

Target

Tissue specificity	Highly expressed in placenta, with lower levels in prostate and colon and some expression in kidney.
Sequence similarities	Belongs to the TGF-beta family.
Cellular localization	Secreted.

Images

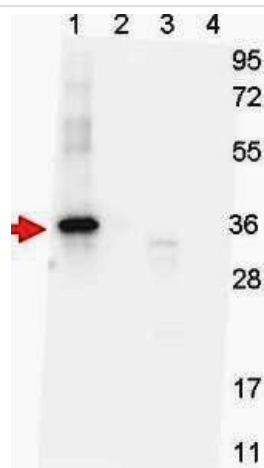


Immunocytochemistry - Anti-GDF15 antibody

[7C12.B3.F2] (ab106112)

This image is courtesy of Dr. Ruma Raha-Chowdhury (Cambridge University, United Kingdom)

ICC/IF image of GDF15 staining on human blood film using ab106112 (1:1000). The cells were fixed using formaldehyde and permeabilized using 0.1% TritonX in 0.1% PBS. The cells were then blocked using 10% donkey serum for 1 hour at 24°C. ab106112 was diluted to 1:1000 and incubated with cells for 4 hours at 24°C. The secondary antibody used was donkey polyclonal to mouse IgG conjugated to Alexa Fluor 568.



Western blot - Anti-GDF15 antibody [7C12.B3.F2] (ab106112)

All lanes : Anti-GDF15 antibody [7C12.B3.F2] (ab106112) at 1/1000 dilution

Lane 1 : Pichia pastoris (yeast) whole cell lysate expressing recombinant GDF15 H variant with SUMO expression tag

Lane 2 : Pichia pastoris (yeast) whole cell lysate expressing recombinant GDF15 D variant with SUMO expression tag

Lane 3 : Pichia pastoris (yeast) whole cell lysate expressing recombinant GDF15 H variant

Lane 4 : Pichia pastoris (yeast) whole cell lysate expressing recombinant GDF15 D variant

Secondary

All lanes : Peroxidase conjugated Gt-a-Mouse IgG at 1/40000 dilution

Performed under reducing conditions.

Predicted band size: 34 kDa

Please note: All products are "FOR RESEARCH USE ONLY. NOT FOR USE IN DIAGNOSTIC PROCEDURES"

Our Abpromise to you: Quality guaranteed and expert technical support

- Replacement or refund for products not performing as stated on the datasheet
- Valid for 12 months from date of delivery
- Response to your inquiry within 24 hours

- We provide support in Chinese, English, French, German, Japanese and Spanish
- Extensive multi-media technical resources to help you
- We investigate all quality concerns to ensure our products perform to the highest standards

If the product does not perform as described on this datasheet, we will offer a refund or replacement. For full details of the Abpromise, please visit <https://www.abcam.com/abpromise> or contact our technical team.

Terms and conditions

- Guarantee only valid for products bought direct from Abcam or one of our authorized distributors