

Product datasheet

Anti-GEMC1 antibody ab112571

1 Abreviews 1 Image

Overview

| | |
|----------------------------|--|
| Product name | Anti-GEMC1 antibody |
| Description | Rabbit polyclonal to GEMC1 |
| Host species | Rabbit |
| Tested applications | Suitable for: WB |
| Species reactivity | Reacts with: Mouse, Human |
| Immunogen | A 19 amino acid peptide corresponding to an internal sequence of Human GEMC1 (NP_001140158). |
| Positive control | Mouse Heart tissue lysate. |

Properties

| | |
|-----------------------------|--|
| Form | Liquid |
| Storage instructions | Shipped at 4°C. Store at +4°C. |
| Storage buffer | Preservative: 0.02% Sodium azide Constituent: 99% PBS |
| Purity | Immunogen affinity purified |
| Purification notes | ab112571 is purified by affinity chromatography purified via peptide column. |
| Clonality | Polyclonal |
| Isotype | IgG |

Applications

Our [Abpromise guarantee](#) covers the use of **ab112571** in the following tested applications.

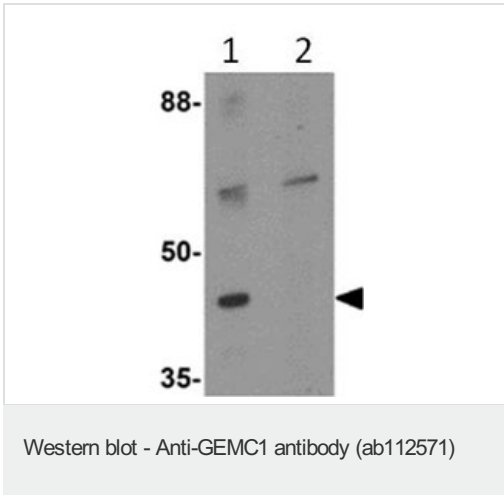
The application notes include recommended starting dilutions; optimal dilutions/concentrations should be determined by the end user.

| Application | Abreviews | Notes |
|-------------|-----------|---|
| WB | | Use a concentration of 1 - 2 µg/ml. Predicted molecular weight: 38 kDa. |

Target

| | |
|------------------------------|--|
| Relevance | Regulator of DNA replication. Promotes initiation of chromosomal DNA replication by mediating TOPBP1- and CDK2-dependent recruitment of CDC45L onto replication origins. |
| Cellular localization | Nuclear |

Images



All lanes : Anti-GEMC1 antibody (ab112571) at 1 µg/ml

Lane 1 : Mouse heart tissue lysate

Lane 2 : Mouse heart tissue lysate with blocking peptide

Lysates/proteins at 15 µg per lane.

Predicted band size: 38 kDa

Please note: All products are "FOR RESEARCH USE ONLY. NOT FOR USE IN DIAGNOSTIC PROCEDURES"

Our Abpromise to you: Quality guaranteed and expert technical support

- Replacement or refund for products not performing as stated on the datasheet
- Valid for 12 months from date of delivery
- Response to your inquiry within 24 hours
- We provide support in Chinese, English, French, German, Japanese and Spanish
- Extensive multi-media technical resources to help you
- We investigate all quality concerns to ensure our products perform to the highest standards

If the product does not perform as described on this datasheet, we will offer a refund or replacement. For full details of the Abpromise, please visit <https://www.abcam.com/abpromise> or contact our technical team.

Terms and conditions

- Guarantee only valid for products bought direct from Abcam or one of our authorized distributors