

Product datasheet

Anti-Geminin antibody ab104306

★★★★★ 1 Abreviews 4 References 7 Images

Overview

Product name	Anti-Geminin antibody
Description	Mouse monoclonal to Geminin
Host species	Mouse
Tested applications	Suitable for: IHC-P, ICC/IF, WB, Flow Cyt
Species reactivity	Reacts with: Human
Immunogen	Recombinant fragment, corresponding to amino acids 110-209 of Human Geminin (AAH05185) with a proprietary tag.
Positive control	Partial tagged recombinant Geminin; Geminin transfected 293T cell lysate; Human lymph node; Human placenta; HeLa cells.
General notes	<p>This product was changed from ascites to tissue culture supernatant on 22 May 2019. Please note that the dilutions may need to be adjusted accordingly. If you have any questions, please do not hesitate to contact our scientific support team.</p> <p>Reproducibility is key to advancing scientific discovery and accelerating scientists' next breakthrough.</p> <p>Abcam is leading the way with our range of recombinant antibodies, knockout-validated antibodies and knockout cell lines, all of which support improved reproducibility.</p> <p>We are also planning to innovate the way in which we present recommended applications and species on our product datasheets, so that only applications & species that have been tested in our own labs, our suppliers or by selected trusted collaborators are covered by our Abpromise™ guarantee.</p> <p>In preparation for this, we have started to update the applications & species that this product is Abpromise guaranteed for.</p> <p>We are also updating the applications & species that this product has been "predicted to work with," however this information is not covered by our Abpromise guarantee.</p> <p>Applications & species from publications and Abreviews that have not been tested in our own labs or in those of our suppliers are not covered by the Abpromise guarantee.</p> <p>Please check that this product meets your needs before purchasing. If you have any questions, special requirements or concerns, please send us an inquiry and/or contact our Support team ahead of purchase. Recommended alternatives for this product can be found below, as well as customer reviews and Q&As.</p>

Properties

Form	Liquid
Storage instructions	Shipped at 4°C. Upon delivery aliquot. Store at -20°C or -80°C. Avoid freeze / thaw cycle.
Storage buffer	pH: 7.4 Constituent: 2.68% PBS
Purity	Tissue culture supernatant
Purification notes	Purified from TCS.
Clonality	Monoclonal
Isotype	IgG1
Light chain type	kappa

Applications

Our [Abpromise guarantee](#) covers the use of **ab104306** in the following tested applications.

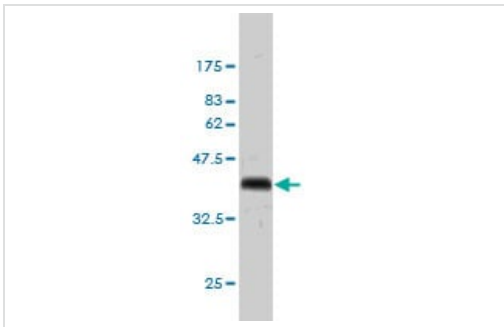
The application notes include recommended starting dilutions; optimal dilutions/concentrations should be determined by the end user.

Application	Abreviews	Notes
IHC-P		Use at an assay dependent concentration. Perform heat mediated antigen retrieval with citrate buffer pH 6 before commencing with IHC staining protocol.
ICC/IF	★★★★★	Use at an assay dependent concentration.
WB		Use at an assay dependent concentration. Predicted molecular weight: 24 kDa.
Flow Cyt		Use at an assay dependent concentration. ab170190 - Mouse monoclonal IgG1, is suitable for use as an isotype control with this antibody.

Target

Function	Inhibits DNA replication by preventing the incorporation of MCM complex into prereplication complex (pre-RC). It is degraded during the mitotic phase of the cell cycle. Its destruction at the metaphase-anaphase transition permits replication in the succeeding cell cycle.
Sequence similarities	Belongs to the geminin family.
Developmental stage	Absent during G1 phase, accumulates during S, G2, and M phases, and disappears at the time of the metaphase-anaphase transition.

Images



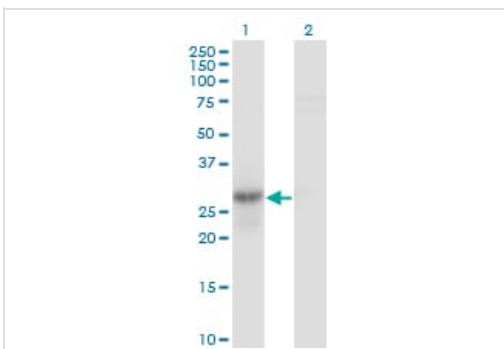
Western blot - Anti-Geminin antibody (ab104306)

Anti-Geminin antibody (ab104306) at 5 µg/ml + Immunogen at 0.2 µg

Predicted band size: 24 kDa

The tagged immunogen has a predicted MWt of 37 kDa.

This image was generated using the ascites version of the product.



Western blot - Anti-Geminin antibody (ab104306)

All lanes : Anti-Geminin antibody (ab104306) at 5 µg/ml

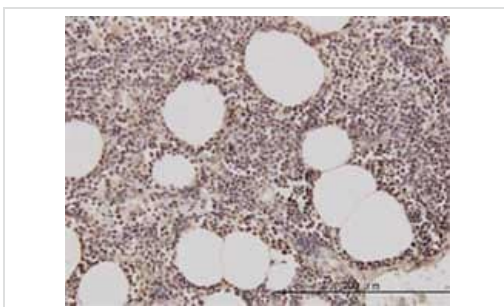
Lane 1 : Geminin transfected 293T cell lysate

Lane 2 : Non-transfected 293T cell lysate

Lysates/proteins at 25 µg per lane.

Predicted band size: 24 kDa

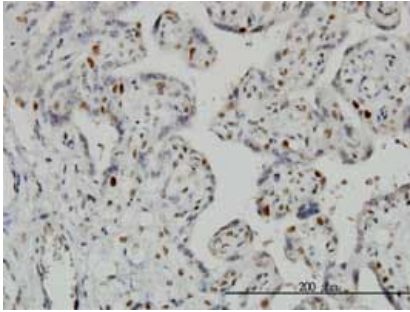
This image was generated using the ascites version of the product.



Immunohistochemistry (Formalin/PFA-fixed paraffin-embedded sections) - Anti-Geminin antibody (ab104306)

ab104306, at 3 µg/ml, staining Geminin in formalin-fixed paraffin-embedded Human lymph node by Immunohistochemistry.

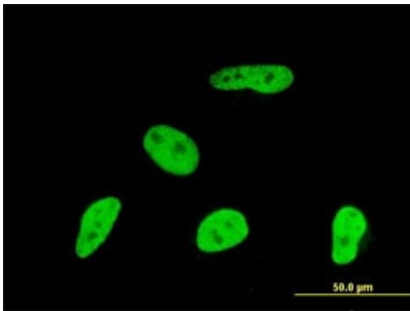
This image was generated using the ascites version of the product.



Immunohistochemistry (Formalin/PFA-fixed paraffin-embedded sections) - Anti-Geminin antibody (ab104306)

ab104306, at 1 µg/ml, staining Geminin in formalin-fixed paraffin-embedded Human placenta by Immunohistochemistry.

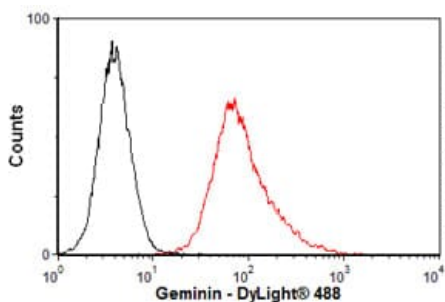
This image was generated using the ascites version of the product.



Immunocytochemistry/ Immunofluorescence - Anti-Geminin antibody (ab104306)

ab104306, at 10 µg/ml, staining Geminin in HeLa cells by Immunofluorescence.

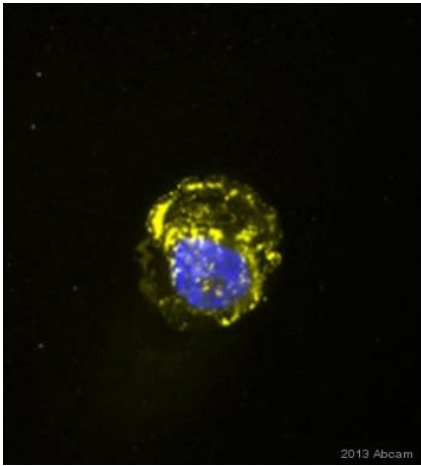
This image was generated using the ascites version of the product.



Flow Cytometry - Anti-Geminin antibody (ab104306)

Overlay histogram showing HeLa cells stained with ab104306 (red line). The cells were fixed with 80% methanol (5 min) and then permeabilized with 0.1% PBS-Tween for 20 min. The cells were then incubated in 1x PBS / 10% normal goat serum / 0.3M glycine to block non-specific protein-protein interactions followed by the antibody (ab104306, 1 µg/1x10⁶ cells) for 30 min at 22°C. The secondary antibody used was DyLight® 488 goat anti-mouse IgG (H+L) (ab96879) at 1/500 dilution for 30 min at 22°C. Isotype control antibody (black line) was mouse IgG1 [ICIGG1] (ab91353, 2 µg/1x10⁶ cells) used under the same conditions. Acquisition of >5,000 events was performed. This antibody gave a positive signal in HeLa cells fixed with 4% paraformaldehyde (10 min)/permeabilized with 0.1% PBS-Tween for 20 min used under the same conditions.

This image was generated using the ascites version of the product.



Immunofluorescence analysis of Caki-2 (Clear cell renal carcinoma) cells, staining Geminin with ab104306.

Cells were fixed with formaldehyde, permeabilized with 0.25% Triton X-100 and blocked with 1% BSA for 30 minutes at 25°C. Primary antibody was concentrated using [ab102778](#) Antibody Concentration Kit and conjugated to Rhodamine using [ab102915](#) EasyLink Rhodamine Conjugation Kit. Samples were incubated with conjugated primary antibody (20 µg/ml in diluent) for 2 hours at 25°C.

This image was generated using the ascites version of the product.

Immunocytochemistry/ Immunofluorescence - Anti-Geminin antibody (ab104306)

This image is courtesy of an Abreview submitted by Melody Jimenez

Please note: All products are "FOR RESEARCH USE ONLY. NOT FOR USE IN DIAGNOSTIC PROCEDURES"

Our Abpromise to you: Quality guaranteed and expert technical support

- Replacement or refund for products not performing as stated on the datasheet
- Valid for 12 months from date of delivery
- Response to your inquiry within 24 hours
- We provide support in Chinese, English, French, German, Japanese and Spanish
- Extensive multi-media technical resources to help you
- We investigate all quality concerns to ensure our products perform to the highest standards

If the product does not perform as described on this datasheet, we will offer a refund or replacement. For full details of the Abpromise, please visit <https://www.abcam.com/abpromise> or contact our technical team.

Terms and conditions

- Guarantee only valid for products bought direct from Abcam or one of our authorized distributors