

Product datasheet

Anti-Geminin antibody ab187553

3 Images

Overview

<b>Product name</b>	Anti-Geminin antibody
<b>Description</b>	Rabbit polyclonal to Geminin
<b>Host species</b>	Rabbit
<b>Tested applications</b>	<b>Suitable for:</b> IHC-P, WB
<b>Species reactivity</b>	<b>Reacts with:</b> Mouse, Rat, Human
<b>Immunogen</b>	Recombinant full length protein corresponding to Human Geminin aa 1-209.

Sequence:

MNPSMKQKQEEIKENIKNSSVPRRTLKMIQPSASGSLV  
 GRENELSAGLSK  
 RKHRNDHLTSTTSSPGVIVPESENKNLGGVTQESFD  
 LMIKENPSSQYWK  
 EVAEKRRKALYEALKENEKLNHKEIEQKDNEIARLKKEN  
 KELAEVAEHVQY  
 MAELIERLNGEPLDNFESLDNQEFDSEEETVEDSLVE  
 DSEIGTCAEGTVS SSTDAKPCI

Database link: [O75496](#)

 [Run BLAST with](#)

 [Run BLAST with](#)

<b>Positive control</b>	SW480, 22RV-1, HL60, HepG2, MCF7 and K562 cell line extracts.
-------------------------	---

Properties

<b>Form</b>	Liquid
<b>Storage instructions</b>	Shipped at 4°C. Store at +4°C short term (1-2 weeks). Upon delivery aliquot. Store at -20°C long term. Avoid freeze / thaw cycle.
<b>Storage buffer</b>	pH: 7.3 Preservative: 0.02% Sodium azide Constituents: 50% Glycerol, 49% PBS
<b>Purity</b>	Immunogen affinity purified
<b>Clonality</b>	Polyclonal
<b>Isotype</b>	IgG

## Applications

Our [Abpromise guarantee](#) covers the use of **ab187553** in the following tested applications.

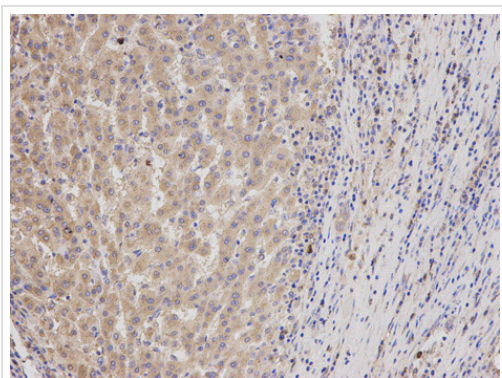
The application notes include recommended starting dilutions; optimal dilutions/concentrations should be determined by the end user.

Application	Abreviews	Notes
IHC-P		1/50 - 1/200.
WB		1/500 - 1/2000. Predicted molecular weight: 24 kDa.

## Target

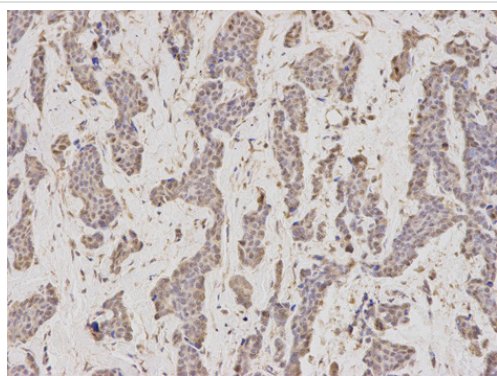
<b>Function</b>	Inhibits DNA replication by preventing the incorporation of MCM complex into prereplication complex (pre-RC). It is degraded during the mitotic phase of the cell cycle. Its destruction at the metaphase-anaphase transition permits replication in the succeeding cell cycle.
<b>Sequence similarities</b>	Belongs to the geminin family.
<b>Developmental stage</b>	Absent during G1 phase, accumulates during S, G2, and M phases, and disappears at the time of the metaphase-anaphase transition.

## Images



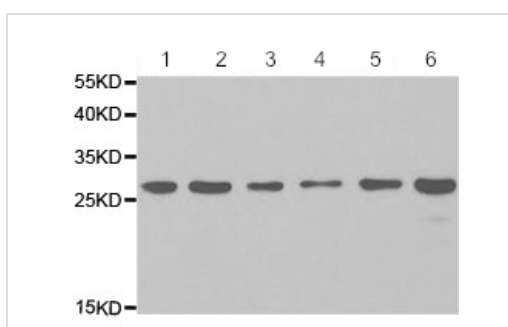
Immunohistochemistry (Formalin/PFA-fixed paraffin-embedded sections) analysis of human liver cancer tissue labelling Geminin with ab187553 at 1/200. Magnification: 200x.

Immunohistochemistry (Formalin/PFA-fixed paraffin-embedded sections) - Anti-Geminin antibody (ab187553)



Immunohistochemistry (Formalin/PFA-fixed paraffin-embedded sections) - Anti-Geminin antibody (ab187553)

Immunohistochemistry (Formalin/PFA-fixed paraffin-embedded sections) analysis of human breast cancer tissue labelling Geminin with ab187553 at 1/200. Magnification: 200x.



Western blot - Anti-Geminin antibody (ab187553)

**All lanes** : Anti-HIF1AN/FIH-1 antibody (ab187524) at 1/500 dilution

**Lane 1** : SW480 cell line extract

**Lane 2** : 22RV-1 cell line extract

**Lane 3** : HL60 cell line extract

**Lane 4** : HepG2 cell line extract

**Lane 5** : MCF7 cell line extract

**Lane 6** : K562 cell line extract

**Predicted band size:** 24 kDa

**Please note:** All products are "FOR RESEARCH USE ONLY. NOT FOR USE IN DIAGNOSTIC PROCEDURES"

### Our Abpromise to you: Quality guaranteed and expert technical support

- Replacement or refund for products not performing as stated on the datasheet
- Valid for 12 months from date of delivery
- Response to your inquiry within 24 hours
- We provide support in Chinese, English, French, German, Japanese and Spanish
- Extensive multi-media technical resources to help you
- We investigate all quality concerns to ensure our products perform to the highest standards

If the product does not perform as described on this datasheet, we will offer a refund or replacement. For full details of the Abpromise, please visit <https://www.abcam.com/abpromise> or contact our technical team.

### Terms and conditions

- Guarantee only valid for products bought direct from Abcam or one of our authorized distributors