




Product datasheet

Anti-Ghrelin antibody ab228497

1 Image

Overview

Product name	Anti-Ghrelin antibody
Description	Guinea pig polyclonal to Ghrelin
Host species	Guinea pig
Tested applications	Suitable for: IHC-P
Species reactivity	Reacts with: Sheep Predicted to work with: Human 
Immunogen	<p>Synthetic peptide corresponding to Human Ghrelin aa 24-51. Conjugated to carrier protein to enhance the immunological response.</p> <p>Sequence:</p> <p>GSSFLSPEHQRVQQRKESKKPPAKLQPR</p> <p>Database link: Q9UBU3</p> <p style="text-align: right;">  Run BLAST with  Run BLAST with </p>
Positive control	IHC-P: Sheep abomasum tissue.
General notes	<p>Reproducibility is key to advancing scientific discovery and accelerating scientists' next breakthrough.</p> <p>Abcam is leading the way with our range of recombinant antibodies, knockout-validated antibodies and knockout cell lines, all of which support improved reproducibility.</p> <p>We are also planning to innovate the way in which we present recommended applications and species on our product datasheets, so that only applications & species that have been tested in our own labs, our suppliers or by selected trusted collaborators are covered by our Abpromise™ guarantee.</p> <p>In preparation for this, we have started to update the applications & species that this product is Abpromise guaranteed for.</p> <p>We are also updating the applications & species that this product has been “predicted to work with,” however this information is not covered by our Abpromise guarantee.</p> <p>Applications & species from publications and Abreviews that have not been tested in our own labs or in those of our suppliers are not covered by the Abpromise guarantee.</p> <p>Please check that this product meets your needs before purchasing. If you have any questions, special requirements or concerns, please send us an inquiry and/or contact our Support team ahead of purchase. Recommended alternatives for this product can be found below, as well as customer reviews and Q&As.</p>

Properties

Form	Lyophilized: Reconstitute in 50 µl sterile water. Centrifuge to remove any insoluble material. It is recommended that a thawed sample is stored at 4°C for no longer than 2 weeks. Allocation of appropriate anti-bacterial agent can increase shelf life by several weeks. Diluted serum should be prepared as required. Long term stability requires storage, preferably in small aliquots at -20°C or lower. Glycerol (1:1) can be added to neat serum for additional stability if intended use does not prevent this.
Storage instructions	Shipped at 4°C. Store at +4°C short term (1-2 weeks). Upon delivery aliquot. Store at -20°C long term. Avoid freeze / thaw cycle.
Storage buffer	pH: 7
Purity	Whole antiserum
Clonality	Polyclonal

Applications

Our [Abpromise guarantee](#) covers the use of **ab228497** in the following tested applications.

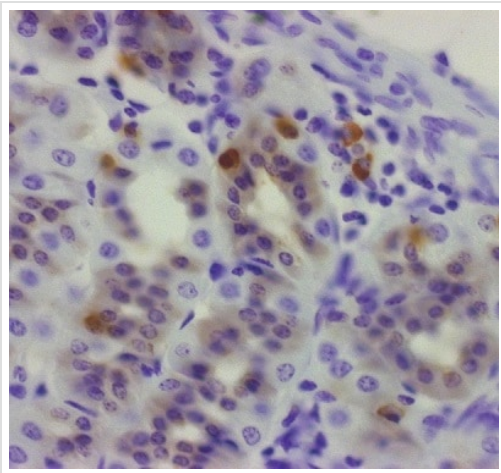
The application notes include recommended starting dilutions; optimal dilutions/concentrations should be determined by the end user.

Application	Abreviews	Notes
IHC-P		1/3000. No staining is evident when the primary antibody is pre-absorbed with 0.5 mg/ml of human Ghrelin.

Target

Function	Ghrelin is the ligand for growth hormone secretagogue receptor type 1 (GHSR). Induces the release of growth hormone from the pituitary. Has an appetite-stimulating effect, induces adiposity and stimulates gastric acid secretion. Involved in growth regulation. Obestatin may be the ligand for GPR39. May have an appetite-reducing effect resulting in decreased food intake. May reduce gastric emptying activity and jejunal motility.
Tissue specificity	Highest level in stomach. All forms are found in serum as well. Other tissues compensate for the loss of ghrelin synthesis in the stomach following gastrectomy.
Sequence similarities	Belongs to the motilin family.
Post-translational modifications	O-octanoylation or O-decanoylation is essential for ghrelin activity. The O-decanoylated forms Ghrelin-27-C10 and Ghrelin-28-C10 differ in the length of the carbon backbone of the carboxylic acid bound to Ser-26. A small fraction of ghrelin, ghrelin-28-C10:1, may be modified with a singly unsaturated carboxylic acid. Amidation of Leu-98 is essential for obestatin activity.
Cellular localization	Secreted.

Images



Paraffin-embedded sheep abomasum tissue stained for Ghrelin using ab228497 at 1/1000 dilution in immunohistochemical analysis, followed by a biotinylated secondary antibody.

Immunohistochemistry (Formalin/PFA-fixed paraffin-embedded sections) - Guinea pig Polyclonal to Ghrelin (ab228497)

Please note: All products are "FOR RESEARCH USE ONLY. NOT FOR USE IN DIAGNOSTIC PROCEDURES"

Our Abpromise to you: Quality guaranteed and expert technical support

- Replacement or refund for products not performing as stated on the datasheet
- Valid for 12 months from date of delivery
- Response to your inquiry within 24 hours

- We provide support in Chinese, English, French, German, Japanese and Spanish
- Extensive multi-media technical resources to help you
- We investigate all quality concerns to ensure our products perform to the highest standards

If the product does not perform as described on this datasheet, we will offer a refund or replacement. For full details of the Abpromise, please visit <https://www.abcam.com/abpromise> or contact our technical team.

Terms and conditions

- Guarantee only valid for products bought direct from Abcam or one of our authorized distributors