

Product datasheet

Anti-Giantin antibody [9B6] - Golgi Marker ab37266

★★★★★ 11 Abreviews 36 References 4 Images

Overview

Product name	Anti-Giantin antibody [9B6] - Golgi Marker
Description	Mouse monoclonal [9B6] to Giantin - Golgi Marker
Host species	Mouse
Tested applications	Suitable for: IHC-P, ICC/IF
Species reactivity	Reacts with: Rat, Human
Immunogen	Full length protein corresponding to Rat Giantin aa 1 to the C-terminus. Database link: NP_620240.1
Positive control	HeLa cells.
General notes	This antibody clone is manufactured by Abcam. If you require this antibody in a particular buffer formulation or a particular conjugate for your experiments, please contact orders@abcam.com or you can find further information here .

Properties

Form	Liquid
Storage instructions	Shipped at 4°C. Store at +4°C short term (1-2 weeks). Upon delivery aliquot. Store at -20°C or -80°C. Avoid freeze / thaw cycle.
Storage buffer	Preservative: 0.02% Sodium azide Constituent: PBS
Purity	IgG fraction
Clonality	Monoclonal
Clone number	9B6
Isotype	IgG1

Applications

Our [Abpromise guarantee](#) covers the use of **ab37266** in the following tested applications.

The application notes include recommended starting dilutions; optimal dilutions/concentrations should be determined by the end user.

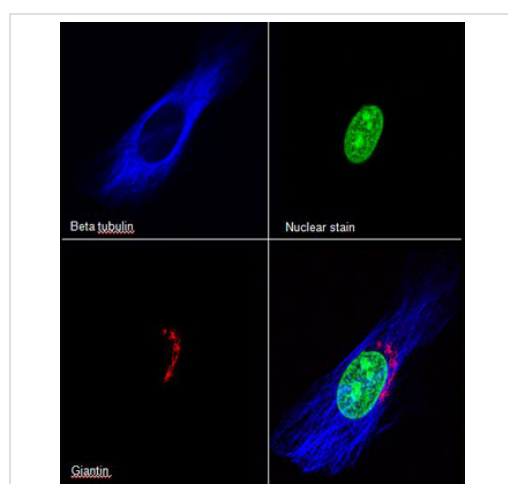
Application	Abreviews	Notes
IHC-P	★★★★★	1/200. Perform heat mediated antigen retrieval before commencing with IHC staining protocol.
ICC/IF	★★★★☆	Use a concentration of 5 - 10 µg/ml.

Target

Function May participate in forming intercisternal cross-bridges of the Golgi complex.

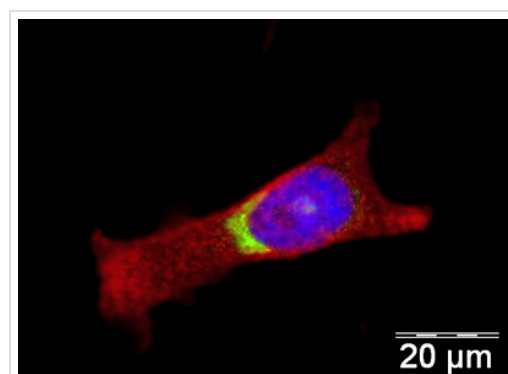
Cellular localization Golgi apparatus membrane.

Images



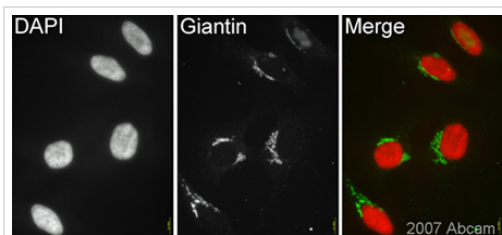
Immunocytochemistry/ Immunofluorescence - Anti-Giantin antibody [9B6] - Golgi Marker (ab37266)

The cells were 100% methanol fixed (5 min) and then incubated in 1%BSA / 10% normal goat serum / 0.3M glycine in 0.1% PBS-Tween for 1h to permeabilise the cells and block non-specific protein-protein interactions. The cells were then incubated with the antibody (ab6046, 1µg/ml) and (ab37266, 1µg/ml) overnight at +4°C. The secondary antibodies were ab150115 Alexa Fluor® 647 goat anti-mouse IgG (H+L) used at 2µg/ml for 1h and ab175652 Alexa Fluor® 405 goat anti-rabbit IgG (H+L) used at 2µg/ml for 1h. Nuclear Green LCS1 (ab138904) was used to stain the cell nuclei (green) at a dilution of 1/500.



Immunocytochemistry/ Immunofluorescence - Anti-Giantin antibody [9B6] - Golgi Marker (ab37266)

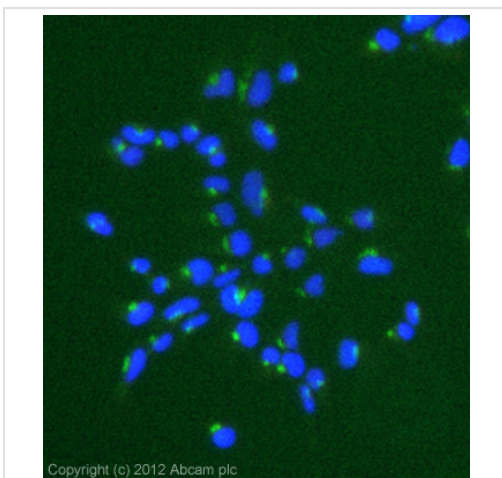
ICC/IF image of ab37266 stained human HeLa cells. The cells were methanol fixed (5 min) and incubated with the antibody (ab37266, 1µg/ml) for 1h at room temperature. The secondary antibody (green) was Alexa Fluor® 488 goat anti-mouse IgG (H+L) used at a 1/1000 dilution for 1h. Image-iT™ FX Signal Enhancer was used as the primary blocking agent, 5% BSA (in TBS-T) was used for all other blocking steps. DAPI was used to stain the cell nuclei (blue). Alexa Fluor® 594 WGA was used to label plasma membranes (red).



Immunocytochemistry/ Immunofluorescence - Anti-Giantin antibody [9B6] - Golgi Marker (ab37266)

This image is courtesy of an Abreview submitted by Dr Kirk McManus

ab37266 (1/200) staining Giantin in asynchronous HeLa cells (green). Cells were fixed in Methanol and counterstained with DAPI (red) in order to highlight the nucleus. Please refer to Abreview for further experimental details.



Immunocytochemistry/ Immunofluorescence - Anti-Giantin antibody [9B6] - Golgi Marker (ab37266)

ICC/IF image of ab37266 stained Hek293 cells. The cells were 4% paraformaldehyde fixed (10 min) and then incubated in 1%BSA / 10% normal goat serum / 0.3M glycine in 0.1% PBS-Tween for 1h to permeabilise the cells and block non-specific protein-protein interactions. The cells were then incubated with the antibody (ab37266, 10µg/ml) overnight at +4°C. The secondary antibody (green) was ab96879, DyLight® 488 goat anti-mouse IgG (H+L) used at a 1/250 dilution for 1h. DAPI was used to stain the cell nuclei (blue) at a concentration of 1.43µM.

Please note: All products are "FOR RESEARCH USE ONLY. NOT FOR USE IN DIAGNOSTIC PROCEDURES"

Our Abpromise to you: Quality guaranteed and expert technical support

- Replacement or refund for products not performing as stated on the datasheet
- Valid for 12 months from date of delivery
- Response to your inquiry within 24 hours
- We provide support in Chinese, English, French, German, Japanese and Spanish
- Extensive multi-media technical resources to help you
- We investigate all quality concerns to ensure our products perform to the highest standards

If the product does not perform as described on this datasheet, we will offer a refund or replacement. For full details of the Abpromise, please visit <https://www.abcam.com/abpromise> or contact our technical team.

Terms and conditions

- Guarantee only valid for products bought direct from Abcam or one of our authorized distributors