


Product datasheet

Anti-GLIPR1 antibody ab198215

2 Images

Overview

Product name	Anti-GLIPR1 antibody
Description	Rabbit polyclonal to GLIPR1
Host species	Rabbit
Tested applications	Suitable for: IHC-P, WB
Species reactivity	Reacts with: Mouse, Human Predicted to work with: Rat 
Immunogen	Fusion protein corresponding to Human GLIPR1 (internal sequence). The identity of the protein fusion partner is GST. Database link: P48060
Positive control	Mouse kidney tissue lysate; Human liver cancer tissue
General notes	<p>Reproducibility is key to advancing scientific discovery and accelerating scientists' next breakthrough.</p> <p>Abcam is leading the way with our range of recombinant antibodies, knockout-validated antibodies and knockout cell lines, all of which support improved reproducibility.</p> <p>We are also planning to innovate the way in which we present recommended applications and species on our product datasheets, so that only applications & species that have been tested in our own labs, our suppliers or by selected trusted collaborators are covered by our Abpromise™ guarantee.</p> <p>In preparation for this, we have started to update the applications & species that this product is Abpromise guaranteed for.</p> <p>We are also updating the applications & species that this product has been “predicted to work with,” however this information is not covered by our Abpromise guarantee.</p> <p>Applications & species from publications and Abreviews that have not been tested in our own labs or in those of our suppliers are not covered by the Abpromise guarantee.</p> <p>Please check that this product meets your needs before purchasing. If you have any questions, special requirements or concerns, please send us an inquiry and/or contact our Support team ahead of purchase. Recommended alternatives for this product can be found below, as well as customer reviews and Q&As.</p>

Properties

Form	Liquid
Storage instructions	Shipped at 4°C. Store at +4°C short term (1-2 weeks). Upon delivery aliquot. Store at -20°C long term. Avoid freeze / thaw cycle.
Storage buffer	pH: 7.4 Preservative: 0.05% Sodium azide Constituents: 49% PBS, 50% Glycerol (glycerin, glycerine)
Purity	Immunogen affinity purified
Clonality	Polyclonal
Isotype	IgG

Applications

Our [Abpromise guarantee](#) covers the use of **ab198215** in the following tested applications.

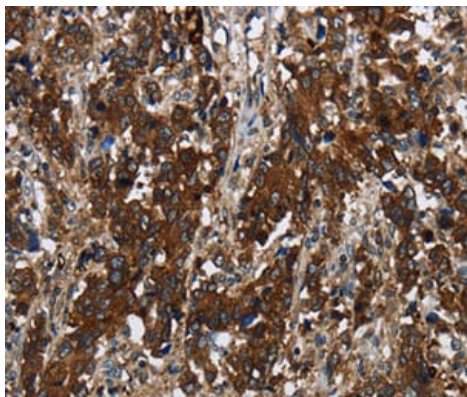
The application notes include recommended starting dilutions; optimal dilutions/concentrations should be determined by the end user.

Application	Abreviews	Notes
IHC-P		1/100 - 1/300.
WB		1/500 - 1/2000. Predicted molecular weight: 30 kDa.

Target

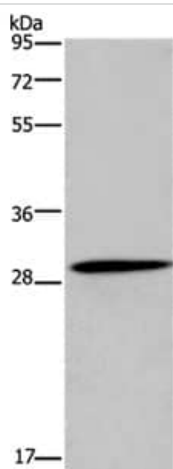
Tissue specificity	According to PubMed:8973356, it is ubiquitously expressed with high levels in lung and kidney and low levels in heart and liver. Highly expressed in cell lines derived from nervous system tumors arising from glia, low or absent in non-glial-derived nervous system tumor cell lines. Also found in fetal kidney. According to PubMed:7607567 it is expressed only in brain tumor glioblastoma multiforme/astrocytoma and not in other nervous system tumors or normal fetal or adult tissues.
Sequence similarities	Belongs to the CRISP family.
Cellular localization	Membrane.

Images



Immunohistochemical analysis of paraffin-embedded Human liver cancer tissue labeling GLIPR1 with ab198215 at 1/60 dilution.

Immunohistochemistry (Formalin/PFA-fixed paraffin-embedded sections) - Anti-GLIPR1 antibody (ab198215)



Anti-GLIPR1 antibody (ab198215) at 1/450 dilution + Mouse kidney tissue lysate at 40 µg

Developed using the ECL technique.

Predicted band size: 30 kDa

Exposure time: 10 seconds

Western blot - Anti-GLIPR1 antibody (ab198215)

Gel: 10% SDS-PAGE

Please note: All products are "FOR RESEARCH USE ONLY. NOT FOR USE IN DIAGNOSTIC PROCEDURES"

Our Abpromise to you: Quality guaranteed and expert technical support

- Replacement or refund for products not performing as stated on the datasheet
- Valid for 12 months from date of delivery
- Response to your inquiry within 24 hours
- We provide support in Chinese, English, French, German, Japanese and Spanish
- Extensive multi-media technical resources to help you
- We investigate all quality concerns to ensure our products perform to the highest standards

If the product does not perform as described on this datasheet, we will offer a refund or replacement. For full details of the Abpromise, please visit <https://www.abcam.com/abpromise> or contact our technical team.

Terms and conditions

- Guarantee only valid for products bought direct from Abcam or one of our authorized distributors