




Product datasheet

Anti-GLT8D1 antibody ab236974

5 Images

Overview

<b>Product name</b>	Anti-GLT8D1 antibody
<b>Description</b>	Rabbit polyclonal to GLT8D1
<b>Host species</b>	Rabbit
<b>Tested applications</b>	<b>Suitable for:</b> WB, IHC-P, ICC/IF
<b>Species reactivity</b>	<b>Reacts with:</b> Mouse, Human <b>Predicted to work with:</b> Rat, Cow 
<b>Immunogen</b>	Recombinant fragment corresponding to Human GLT8D1 aa 33-332. Sequence:  LRNEVTDSGIVGPQPIDFVPNALRHAVDGRQEEIPVVIA ASEDRLGGAIA AINSIQHNTSRNVIFYVTLNNTADHLRSWLNSDSLKSIRY KVNFDPKL LEGKVKEDPDQGESMKPLTFARFYLPILVPSAKKAYM DDDVIVQGDILA LYNTALKPGHAAAFSEDCDSASTKVIVIRGAGNQYNYIG YLDYKKERIRKL SMKASTCSFNPGVVFVANL TEWKRQNITNQLEKWMKL NVEEGLYSRTLGS ITTPPLLIVFYQQHSTIDPMWNVRLHGSSAGKRYSPQFV KAAKLLHWNGH  Database link: <a href="#">Q68CQ7</a>   <a href="#">Run BLAST with</a>  <a href="#">Run BLAST with</a>
<b>Positive control</b>	WB: Mouse liver lysate. IHC-P: Human kidney and liver tissues. ICC/IF: HepG2 and PC-3 cells.

Properties

<b>Form</b>	Liquid
<b>Storage instructions</b>	Shipped at 4°C. Store at +4°C short term (1-2 weeks). Upon delivery aliquot. Store at -20°C long term. Avoid freeze / thaw cycle.
<b>Storage buffer</b>	pH: 7.40 Preservative: 0.03% Proclin

	Constituents: 50% Glycerol, PBS
<b>Purity</b>	Protein G purified
<b>Purification notes</b>	Purity >95%.
<b>Clonality</b>	Polyclonal
<b>Isotype</b>	IgG

## Applications

Our [Abpromise guarantee](#) covers the use of **ab236974** in the following tested applications.

The application notes include recommended starting dilutions; optimal dilutions/concentrations should be determined by the end user.

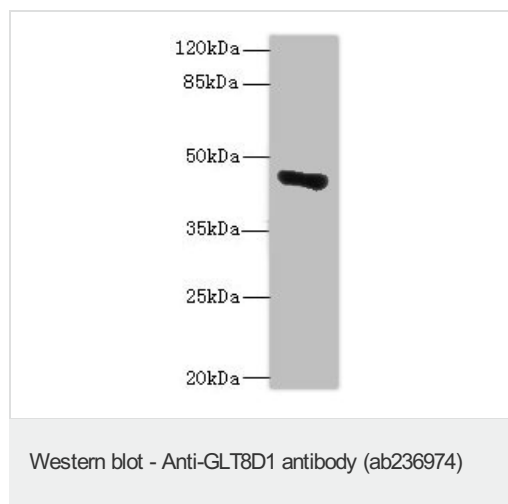
Application	Abreviews	Notes
WB		1/500 - 1/2000. Predicted molecular weight: 42 kDa.
IHC-P		1/20 - 1/200.
ICC/IF		1/50 - 1/200.

## Target

**Sequence similarities** Belongs to the glycosyltransferase 8 family.

**Cellular localization** Membrane.

## Images

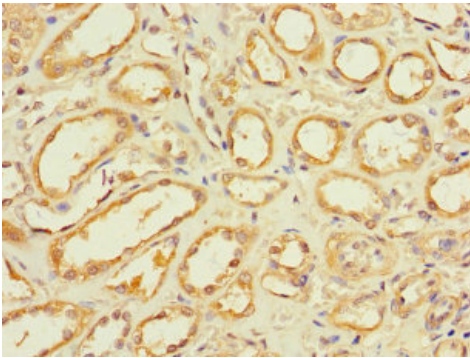


Anti-GLT8D1 antibody (ab236974) at 1/500 dilution + Mouse liver lysate

### Secondary

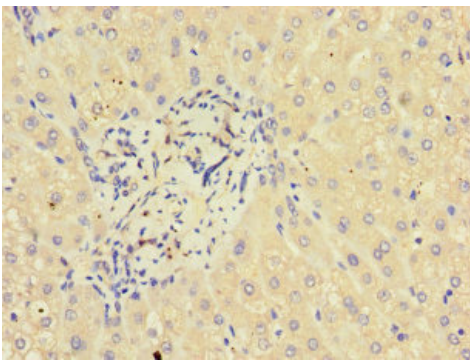
Goat polyclonal to rabbit IgG at 1/10000 dilution

**Predicted band size:** 42 kDa



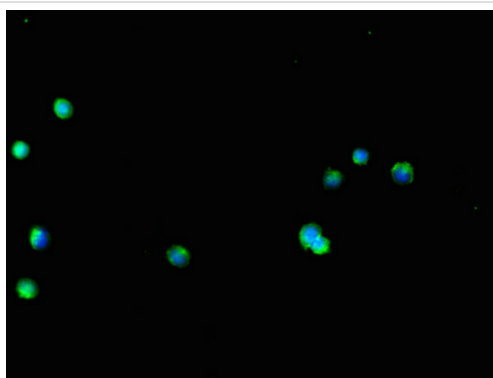
Immunohistochemistry (Formalin/PFA-fixed paraffin-embedded sections) - Anti-GLT8D1 antibody (ab236974)

Paraffin-embedded human kidney tissue stained for GLT8D1 using ab236974 at 1/100 dilution in immunohistochemical analysis.



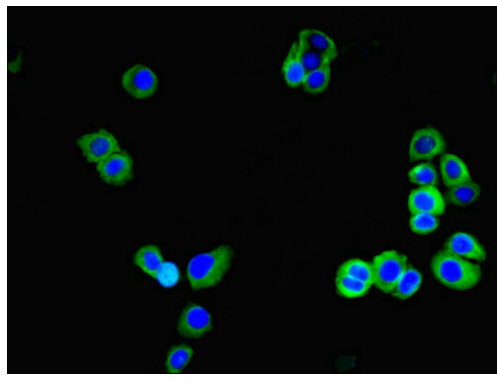
Immunohistochemistry (Formalin/PFA-fixed paraffin-embedded sections) - Anti-GLT8D1 antibody (ab236974)

Paraffin-embedded human liver tissue stained for GLT8D1 using ab236974 at 1/100 dilution in immunohistochemical analysis.



Immunocytochemistry/ Immunofluorescence - Anti-GLT8D1 antibody (ab236974)

HepG2 (Human liver hepatocellular carcinoma cell line) cells stained for GLT8D1 (green) using ab236974 at 1/100 dilution in ICC/IF, followed by Alexa Fluor 488<sup>®</sup> conjugated Goat Anti-Rabbit IgG (H+L).



Immunocytochemistry/ Immunofluorescence - Anti-GLT8D1 antibody (ab236974)

PC-3 (Human prostate adenocarcinoma cell line) cells stained for GLT8D1 (green) using ab236974 at 1/100 dilution in ICC/IF, followed by Alexa Fluor 488<sup>®</sup> conjugated Goat Anti-Rabbit IgG (H+L).

**Please note:** All products are "FOR RESEARCH USE ONLY. NOT FOR USE IN DIAGNOSTIC PROCEDURES"

### Our Abpromise to you: Quality guaranteed and expert technical support

---

- Replacement or refund for products not performing as stated on the datasheet
- Valid for 12 months from date of delivery
- Response to your inquiry within 24 hours
- We provide support in Chinese, English, French, German, Japanese and Spanish
- Extensive multi-media technical resources to help you
- We investigate all quality concerns to ensure our products perform to the highest standards

If the product does not perform as described on this datasheet, we will offer a refund or replacement. For full details of the Abpromise, please visit <https://www.abcam.com/abpromise> or contact our technical team.

### Terms and conditions

---

- Guarantee only valid for products bought direct from Abcam or one of our authorized distributors