


Product datasheet

Anti-Glucagon Receptor antibody ab188743

1 Image

Overview

<b>Product name</b>	Anti-Glucagon Receptor antibody
<b>Description</b>	Rabbit polyclonal to Glucagon Receptor
<b>Host species</b>	Rabbit
<b>Specificity</b>	BLAST analysis of the peptide immunogen showed no homology with other Human proteins.
<b>Tested applications</b>	<b>Suitable for:</b> IHC-P
<b>Species reactivity</b>	<b>Reacts with:</b> Human <b>Predicted to work with:</b> Mouse, Rat, Horse, Hamster, Cow, Dog, Monkey, Gorilla, Opossum 
<b>Immunogen</b>	Synthetic peptide within Human Glucagon Receptor (N terminal). The exact sequence is proprietary. The synthetic peptide corresponds to 18 amino acids (NP_000151.1). Database link: <a href="#">P47871</a>
<b>Positive control</b>	Human liver tissue.

Properties

<b>Form</b>	Liquid
<b>Storage instructions</b>	Shipped at 4°C. Store at +4°C short term (1-2 weeks). Upon delivery aliquot. Store at -20°C long term. Avoid freeze / thaw cycle.
<b>Storage buffer</b>	Preservative: 0.1% Sodium azide Constituent: 99% PBS
<b>Purity</b>	Immunogen affinity purified
<b>Clonality</b>	Polyclonal
<b>Isotype</b>	IgG

Applications

Our [Abpromise guarantee](#) covers the use of **ab188743** in the following tested applications.

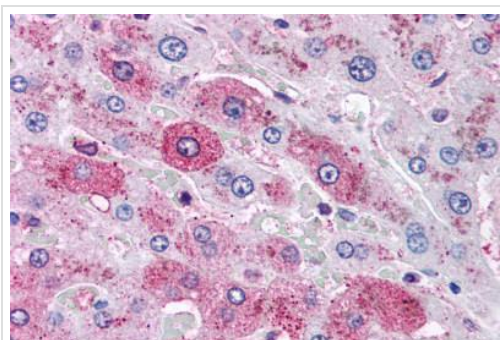
The application notes include recommended starting dilutions; optimal dilutions/concentrations should be determined by the end user.

Application	Abreviews	Notes
IHC-P		Use a concentration of 13 µg/ml. Perform heat mediated antigen retrieval with citrate buffer pH 6 before commencing with IHC staining protocol.

## Target

<b>Function</b>	This is a receptor for glucagon which plays a central role in regulating the level of blood glucose by controlling the rate of hepatic glucose production and insulin secretion. The activity of this receptor is mediated by G proteins which activate adenylyl cyclase and also a phosphatidylinositol-calcium second messenger system.
<b>Sequence similarities</b>	Belongs to the G-protein coupled receptor 2 family.
<b>Cellular localization</b>	Cell membrane.

## Images



Immunohistochemical analysis of formalin-fixed, paraffin-embedded Human liver tissue labeling Glucagon Receptor using ab188743 at 13 µg/ml.

Immunohistochemistry (Formalin/PFA-fixed paraffin-embedded sections) - Anti-Glucagon Receptor antibody (ab188743)

**Please note:** All products are "FOR RESEARCH USE ONLY. NOT FOR USE IN DIAGNOSTIC PROCEDURES"

## Our Abpromise to you: Quality guaranteed and expert technical support

- Replacement or refund for products not performing as stated on the datasheet
- Valid for 12 months from date of delivery
- Response to your inquiry within 24 hours
- We provide support in Chinese, English, French, German, Japanese and Spanish
- Extensive multi-media technical resources to help you
- We investigate all quality concerns to ensure our products perform to the highest standards

If the product does not perform as described on this datasheet, we will offer a refund or replacement. For full details of the Abpromise, please visit <https://www.abcam.com/abpromise> or contact our technical team.

## Terms and conditions

---

- Guarantee only valid for products bought direct from Abcam or one of our authorized distributors