

Product datasheet

Anti-Glucose Transporter GLUT3 antibody ab15311

★★★★★ [4 Abreviews](#) [31 References](#) [3 Images](#)

Overview

Product name	Anti-Glucose Transporter GLUT3 antibody
Description	Rabbit polyclonal to Glucose Transporter GLUT3
Host species	Rabbit
Tested applications	Suitable for: WB, ELISA, IHC-P
Species reactivity	Reacts with: Rat, Human
Immunogen	Synthetic peptide within Human Glucose Transporter GLUT3 aa 450 to the C-terminus (C terminal). The exact sequence is proprietary. Database link: P11169

General notes

This product is FOR RESEARCH USE ONLY. For commercial use, please contact partnerships@abcam.com.

The Life Science industry has been in the grips of a reproducibility crisis for a number of years. Abcam is leading the way in addressing this with our range of recombinant monoclonal antibodies and knockout edited cell lines for gold-standard validation. Please check that this product meets your needs before purchasing.

If you have any questions, special requirements or concerns, please send us an inquiry and/or contact our Support team ahead of purchase. Recommended alternatives for this product can be found below, along with publications, customer reviews and Q&As

Properties

Form	Liquid
Storage instructions	Shipped at 4°C. Upon delivery aliquot and store at -20°C. Avoid freeze / thaw cycles.
Storage buffer	pH: 7.60 Preservative: 0.1% Sodium azide Constituents: PBS, 1% BSA
Purity	Immunogen affinity purified
Clonality	Polyclonal
Isotype	IgG

Applications

The Abpromise guarantee

Our **Abpromise guarantee** covers the use of ab15311 in the following tested applications.

The application notes include recommended starting dilutions; optimal dilutions/concentrations should be determined by the end user.

Application	Abreviews	Notes
WB	★★★★★ (2)	Use at an assay dependent concentration.
ELISA		Use at an assay dependent concentration.
IHC-P	★★★★★ (2)	1/50. Perform heat mediated antigen retrieval with citrate buffer pH 6 before commencing with IHC staining protocol.

Target

Function

Facilitative glucose transporter. Probably a neuronal glucose transporter.

Tissue specificity

Highly expressed in brain. Expressed in many tissues.

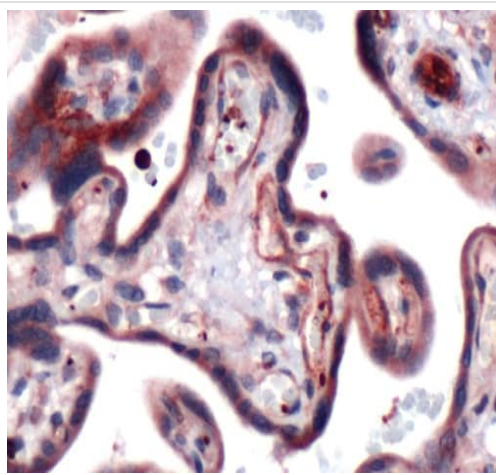
Sequence similarities

Belongs to the major facilitator superfamily. Sugar transporter (TC 2.A.1.1) family. Glucose transporter subfamily.

Cellular localization

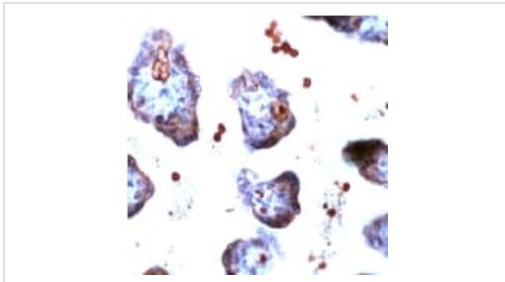
Membrane.

Images



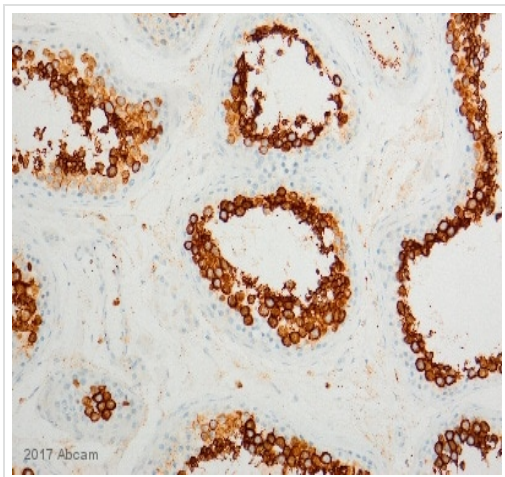
Formalin-fixed, paraffin-embedded human placenta tissue stained for Glucose Transporter GLUT3 using ab15311 at 1/50 dilution in immunohistochemical analysis.

Immunohistochemistry (Formalin/PFA-fixed paraffin-embedded sections) - Anti-Glucose Transporter GLUT3 antibody (ab15311)



ab15311 staining Glucose Transporter GLUT3 in human placenta by Immunohistochemistry (FFPE-sections).

Immunohistochemistry (Formalin/PFA-fixed paraffin-embedded sections) - Anti-Glucose Transporter GLUT3 antibody (ab15311)



Formaldehyde-fixed, paraffin-embedded human testis tissue stained for Glucose Transporter GLUT3 using ab15311 at 1/200 dilution in immunohistochemical analysis.

Immunohistochemistry (Formalin/PFA-fixed paraffin-embedded sections) - Anti-Glucose Transporter GLUT3 antibody (ab15311)

This image is courtesy of an anonymous Abreview.

Please note: All products are "FOR RESEARCH USE ONLY. NOT FOR USE IN DIAGNOSTIC PROCEDURES"

Our Abpromise to you: Quality guaranteed and expert technical support

- Replacement or refund for products not performing as stated on the datasheet
- Valid for 12 months from date of delivery
- Response to your inquiry within 24 hours

- We provide support in Chinese, English, French, German, Japanese and Spanish
- Extensive multi-media technical resources to help you
- We investigate all quality concerns to ensure our products perform to the highest standards

If the product does not perform as described on this datasheet, we will offer a refund or replacement. For full details of the Abpromise, please visit <https://www.abcam.com/abpromise> or contact our technical team.

Terms and conditions

- Guarantee only valid for products bought direct from Abcam or one of our authorized distributors