

Product datasheet

Anti-Glucose Transporter GLUT4 antibody ab216661

3 Images

Overview

Product name	Anti-Glucose Transporter GLUT4 antibody
Description	Rabbit polyclonal to Glucose Transporter GLUT4
Host species	Rabbit
Tested applications	Suitable for: WB, IHC-P, Flow Cyt
Species reactivity	Reacts with: Mouse, Rat, Human
Immunogen	Synthetic peptide aa 467-509 conjugated to keyhole limpet haemocyanin. The exact sequence is proprietary. Database link: P14672
Positive control	WB; Mouse heart lysates. IHC-P; Rat kidney tissue.

Properties

Form	Liquid
Storage instructions	Shipped at 4°C. Store at +4°C short term (1-2 weeks). Upon delivery aliquot. Store at -20°C long term. Avoid freeze / thaw cycle.
Storage buffer	Preservative: 0.09% Sodium azide Constituents: 1% BSA, 50% Glycerol
Purity	Protein A purified
Clonality	Polyclonal
Isotype	IgG

Applications

Our [Abpromise guarantee](#) covers the use of **ab216661** in the following tested applications.

The application notes include recommended starting dilutions; optimal dilutions/concentrations should be determined by the end user.

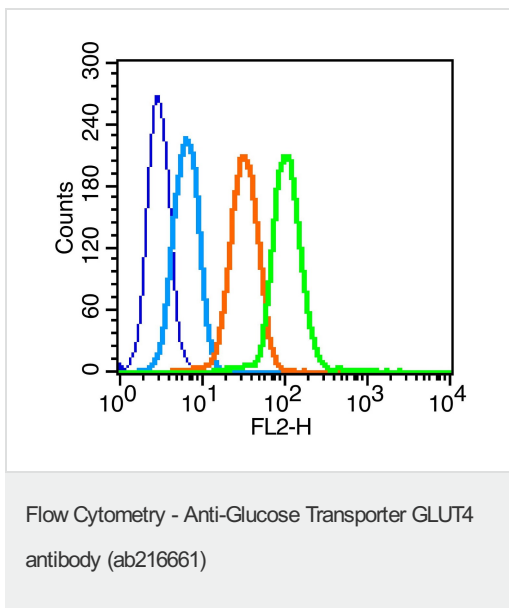
Application	Abreviews	Notes
WB		1/100 - 1/1000. Predicted molecular weight: 54 kDa.
IHC-P		1/100 - 1/500.

Application	Abreviews	Notes
Flow Cyt		1/100.

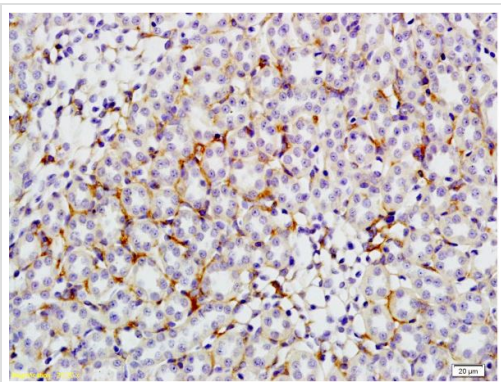
Target

Function	Insulin-regulated facilitative glucose transporter.
Tissue specificity	Skeletal and cardiac muscles; brown and white fat.
Involvement in disease	Diabetes mellitus, non-insulin-dependent
Sequence similarities	Belongs to the major facilitator superfamily. Sugar transporter (TC 2.A.1.1) family. Glucose transporter subfamily.
Post-translational modifications	Sumoylated.
Cellular localization	Cell membrane. Endomembrane system. Cytoplasm, perinuclear region. Localizes primarily to the perinuclear region, undergoing continued recycling to the plasma membrane where it is rapidly reinternalized. The dileucine internalization motif is critical for intracellular sequestration.

Images

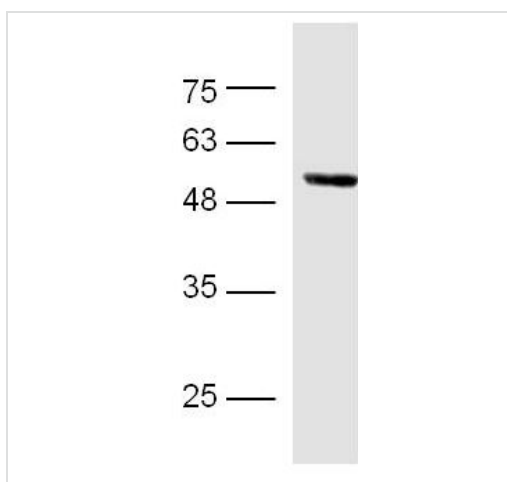


Flow Cytometry of K562 cells with [ab203387](#) at 1/100



Immunohistochemistry (Formalin/PFA-fixed paraffin-embedded sections) - Anti-Glucose Transporter GLUT4 antibody (ab216661)

Immunohistochemical analysis of formalin-fixed, paraffin-embedded rat kidney tissue labeling Glucose Transporter GLUT4 with ab216661 at 1/200 dilution followed by conjugation to the secondary antibody and DAB staining.



Western blot - Anti-Glucose Transporter GLUT4 antibody (ab216661)

Anti-Glucose Transporter GLUT4 antibody (ab216661) at 1/300 dilution (overnight in 4°C) + mouse heart lysates

Secondary

Goat anti-rabbit IgG (H+L), HRP conjugated (90min 37°C) at 1/5000 dilution

Predicted band size: 54 kDa

Please note: All products are "FOR RESEARCH USE ONLY. NOT FOR USE IN DIAGNOSTIC PROCEDURES"

Our Abpromise to you: Quality guaranteed and expert technical support

- Replacement or refund for products not performing as stated on the datasheet
- Valid for 12 months from date of delivery
- Response to your inquiry within 24 hours
- We provide support in Chinese, English, French, German, Japanese and Spanish
- Extensive multi-media technical resources to help you
- We investigate all quality concerns to ensure our products perform to the highest standards

If the product does not perform as described on this datasheet, we will offer a refund or replacement. For full details of the Abpromise, please visit <https://www.abcam.com/abpromise> or contact our technical team.

Terms and conditions

-
- Guarantee only valid for products bought direct from Abcam or one of our authorized distributors