

## Product datasheet

# Anti-GLUD1 antibody [EPR11369(B)] ab166618

Recombinant RabMAb

★★★★★ 1 Abreviews 7 References 7 Images

### Overview

<b>Product name</b>	Anti-GLUD1 antibody [EPR11369(B)]
<b>Description</b>	Rabbit monoclonal [EPR11369(B)] to GLUD1
<b>Host species</b>	Rabbit
<b>Specificity</b>	Ab166618 immunogen shows 100% identity to human GLUD2, therefore there exists a potential for cross-reactivity.
<b>Tested applications</b>	<b>Suitable for:</b> WB, IHC-P, IP <b>Unsuitable for:</b> Flow Cyt or ICC/IF
<b>Species reactivity</b>	<b>Reacts with:</b> Mouse, Rat, Human
<b>Immunogen</b>	Synthetic peptide within Human GLUD1 aa 50-150. The exact sequence is proprietary. Database link: <a href="#">P00367</a>
<b>Positive control</b>	Human fetal liver, HepG2, HeLa and 293T lysates, Human liver & skeletal muscle tissue, permeabilized 293T cells
<b>General notes</b>	This product is a recombinant monoclonal antibody, which offers several advantages including: <ul style="list-style-type: none"> <li>- High batch-to-batch consistency and reproducibility</li> <li>- Improved sensitivity and specificity</li> <li>- Long-term security of supply</li> <li>- Animal-free production</li> </ul> For more information <a href="#">see here</a> .  Our RabMAb <sup>®</sup> technology is a patented hybridoma-based technology for making rabbit monoclonal antibodies. For details on our patents, please refer to <a href="#">RabMAb<sup>®</sup> patents</a> .

### Properties

<b>Form</b>	Liquid
<b>Storage instructions</b>	Shipped at 4°C. Upon delivery aliquot and store at -20°C. Avoid repeated freeze / thaw cycles.
<b>Storage buffer</b>	Preservative: 0.01% Sodium azide Constituents: 9% PBS, 40% Glycerol, 0.05% BSA, 50% Tissue culture supernatant
<b>Purity</b>	Tissue culture supernatant
<b>Clonality</b>	Monoclonal

**Clone number**                      EPR11369(B)  
**Isotype**                                IgG

## Applications

Our [Abpromise guarantee](#) covers the use of **ab166618** in the following tested applications.

The application notes include recommended starting dilutions; optimal dilutions/concentrations should be determined by the end user.

Application	Abreviews	Notes
WB	★★★★★	1/1000 - 1/10000. Predicted molecular weight: 52 kDa.
IHC-P		1/250 - 1/500. Perform heat mediated antigen retrieval with citrate buffer pH 6 before commencing with IHC staining protocol.
IP		1/10 - 1/100.

**Application notes**                      Is unsuitable for Flow Cyt or ICC/IF.

## Target

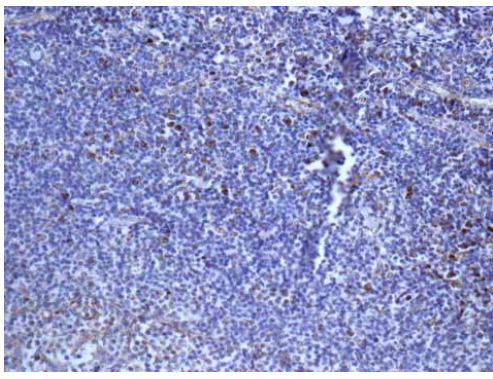
**Function**                                May be involved in learning and memory reactions by increasing the turnover of the excitatory neurotransmitter glutamate.

**Involvement in disease**              Defects in GLUD1 are the cause of familial hyperinsulinemic hypoglycemia type 6 (HHF6) [MIM:606762]; also known as hyperinsulinism-hyperammonemia syndrome (HHS). Familial hyperinsulinemic hypoglycemia [MIM:256450], also referred to as congenital hyperinsulinism, nesidioblastosis, or persistent hyperinsulinemic hypoglycemia of infancy (PPHI), is the most common cause of persistent hypoglycemia in infancy and is due to defective negative feedback regulation of insulin secretion by low glucose levels. In HHF6 elevated oxidation rate of glutamate to alpha-ketoglutarate stimulates insulin secretion in the pancreatic beta cells, while they impair detoxification of ammonium in the liver.

**Sequence similarities**                Belongs to the Glu/Leu/Phe/Val dehydrogenases family.

**Cellular localization**                Mitochondrion matrix.

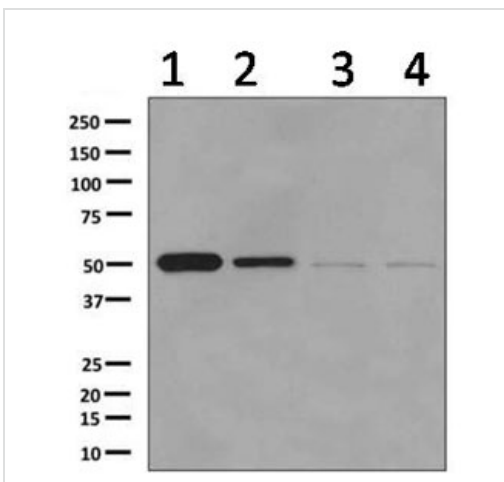
## Images



Immunohistochemistry (Formalin/PFA-fixed paraffin-embedded sections) - Anti-GLUD1 antibody [EPR11369(B)] (ab166618)

ab166618 showing +ve staining in Human normal tonsil.

Perform heat mediated antigen retrieval with citrate buffer pH 6 before commencing with IHC staining protocol.



Western blot - Anti-GLUD1 antibody [EPR11369(B)] (ab166618)

**All lanes** : Anti-GLUD1 antibody [EPR11369(B)] (ab166618) at 1/10000 dilution

**Lane 1** : Human fetal liver lysates

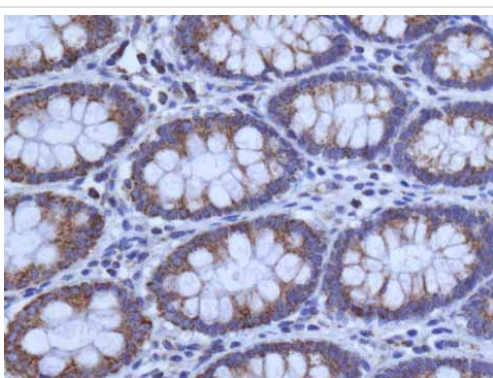
**Lane 2** : HepG2 lysates

**Lane 3** : HeLa lysates

**Lane 4** : 293T lysates

Lysates/proteins at 10 µg per lane.

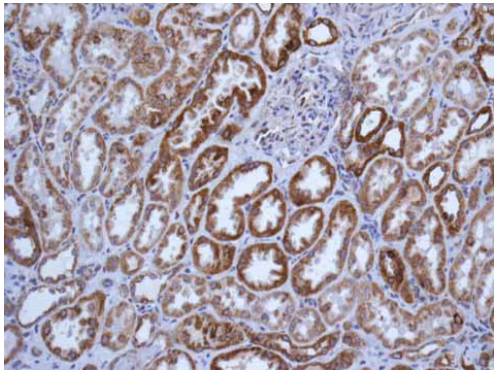
**Predicted band size:** 52 kDa



Immunohistochemistry (Formalin/PFA-fixed paraffin-embedded sections) - Anti-GLUD1 antibody [EPR11369(B)] (ab166618)

ab166618 showing +ve staining in Human normal colon.

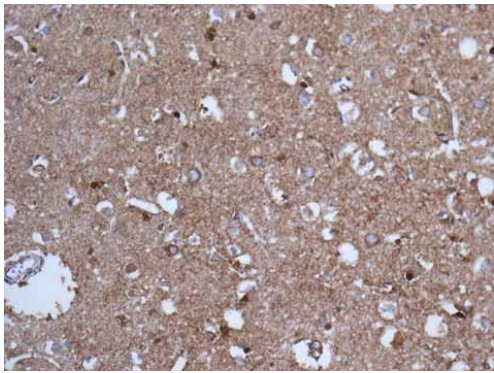
Perform heat mediated antigen retrieval with citrate buffer pH 6 before commencing with IHC staining protocol.



Immunohistochemistry (Formalin/PFA-fixed paraffin-embedded sections) - Anti-GLUD1 antibody  
[EPR11369(B)] (ab166618)

ab166618 showing +ve staining in Human normal kidney.

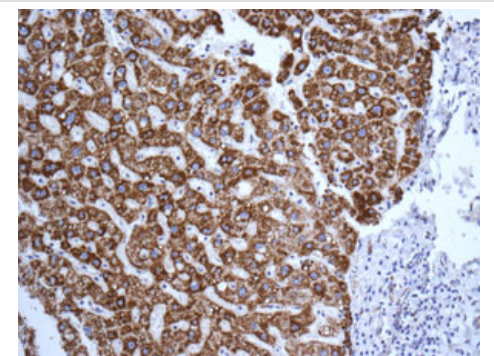
Perform heat mediated antigen retrieval with citrate buffer pH 6 before commencing with IHC staining protocol.



Immunohistochemistry (Formalin/PFA-fixed paraffin-embedded sections) - Anti-GLUD1 antibody  
[EPR11369(B)] (ab166618)

ab166618 showing +ve staining in Human normal brain.

Perform heat mediated antigen retrieval with citrate buffer pH 6 before commencing with IHC staining protocol.



Immunohistochemistry (Formalin/PFA-fixed paraffin-embedded sections) - Anti-GLUD1 antibody  
[EPR11369(B)] (ab166618)

Immunohistochemical analysis of paraffin-embedded Human liver tissue labeling GLUD1 with ab166618 at 1/250 dilution.

Perform heat mediated antigen retrieval with citrate buffer pH 6 before commencing with IHC staining protocol.



Immunohistochemistry (Formalin/PFA-fixed paraffin-embedded sections) - Anti-GLUD1 antibody [EPR11369(B)] (ab166618)

Immunohistochemical analysis of paraffin-embedded Human skeletal muscle tissue labeling GLUD1 with ab166618 at 1/250 dilution.

Perform heat mediated antigen retrieval with citrate buffer pH 6 before commencing with IHC staining protocol.

**Please note:** All products are "FOR RESEARCH USE ONLY. NOT FOR USE IN DIAGNOSTIC PROCEDURES"

### Our Abpromise to you: Quality guaranteed and expert technical support

---

- Replacement or refund for products not performing as stated on the datasheet
- Valid for 12 months from date of delivery
- Response to your inquiry within 24 hours
- We provide support in Chinese, English, French, German, Japanese and Spanish
- Extensive multi-media technical resources to help you
- We investigate all quality concerns to ensure our products perform to the highest standards

If the product does not perform as described on this datasheet, we will offer a refund or replacement. For full details of the Abpromise, please visit <https://www.abcam.com/abpromise> or contact our technical team.

### Terms and conditions

---

- Guarantee only valid for products bought direct from Abcam or one of our authorized distributors