



Product datasheet

Anti-GLUT12 antibody ab202908

2 Images

Overview

Product name	Anti-GLUT12 antibody
Description	Rabbit polyclonal to GLUT12
Host species	Rabbit
Tested applications	Suitable for: Flow Cyt, IHC-P, WB
Species reactivity	Reacts with: Mouse, Rat, Human
Immunogen	Synthetic peptide within Human GLUT12 aa 299-317 conjugated to Keyhole Limpet Haemocyanin (KLH). The exact sequence is proprietary. Sequence: FYASTVLKSVGFQSNEAAS Database link: Q8TD20  Run BLAST with  Run BLAST with
Positive control	Mouse heart tissue. Human LNCaP prostate cancer cells.

Properties

Form	Liquid
Storage instructions	Shipped at 4°C. Store at +4°C short term (1-2 weeks). Upon delivery aliquot. Store at -20°C long term. Avoid freeze / thaw cycle.
Storage buffer	Preservative: 0.09% Sodium azide Constituents: 50% Glycerol, 0.01% BSA
Purity	Protein A purified
Clonality	Polyclonal
Isotype	IgG

Applications

Our [Abpromise guarantee](#) covers the use of **ab202908** in the following tested applications.

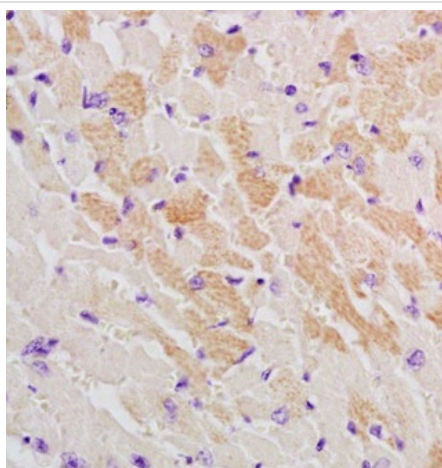
The application notes include recommended starting dilutions; optimal dilutions/concentrations should be determined by the end user.

Application	Abreviews	Notes
Flow Cyt		1/20 - 1/100. ab171870 - Rabbit polyclonal IgG, is suitable for use as an isotype control with this antibody.
IHC-P		1/50 - 1/500. Perform heat mediated antigen retrieval with citrate buffer pH 6 before commencing with IHC staining protocol. Use at 1/50 - 1/200 with fluorescent detection methods.
WB		1/100 - 1/1000. Predicted molecular weight: 67 kDa.

Target

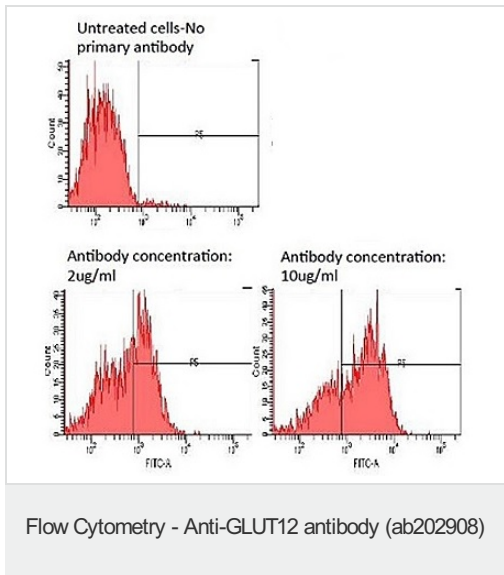
Function	Facilitative glucose transporter.
Tissue specificity	Predominantly expressed in skeletal muscle, heart and prostate, with lower levels in brain, placenta and kidney.
Sequence similarities	Belongs to the major facilitator superfamily. Sugar transporter (TC 2.A.1.1) family. Glucose transporter subfamily.
Post-translational modifications	N-glycosylated.
Cellular localization	Endomembrane system. Cytoplasm > perinuclear region. Localizes primarily perinuclear region in the absence of insulin.

Images



Immunohistochemical analysis of formalin/PFA-fixed paraffin-embedded mouse heart tissue sections labeling GLUT12 with [ab202908](#) at a 1/200 dilution, followed by conjugation to the secondary antibody and DAB staining.

Immunohistochemistry (Formalin/PFA-fixed paraffin-embedded sections) - Anti-GLUT12 antibody ([ab202908](#))



Human LNCaP prostate cancer cells stained with ab202908 for 30 minutes at 4°C, followed by secondary antibody Alexa-Fluor 488 incubation for 30 minutes at 4°C in the dark.

Please note: All products are "FOR RESEARCH USE ONLY. NOT FOR USE IN DIAGNOSTIC PROCEDURES"

Our Abpromise to you: Quality guaranteed and expert technical support

- Replacement or refund for products not performing as stated on the datasheet
- Valid for 12 months from date of delivery
- Response to your inquiry within 24 hours
- We provide support in Chinese, English, French, German, Japanese and Spanish
- Extensive multi-media technical resources to help you
- We investigate all quality concerns to ensure our products perform to the highest standards

If the product does not perform as described on this datasheet, we will offer a refund or replacement. For full details of the Abpromise, please visit <https://www.abcam.com/abpromise> or contact our technical team.

Terms and conditions

- Guarantee only valid for products bought direct from Abcam or one of our authorized distributors