


Product datasheet

Anti-Glutamate Receptor 1 (AMPA subtype) antibody ab116616

1 Image

Overview

Product name	Anti-Glutamate Receptor 1 (AMPA subtype) antibody
Description	Goat polyclonal to Glutamate Receptor 1 (AMPA subtype)
Host species	Goat
Specificity	ab116616 is expected to recognize both reported isoforms (NP_000818.2; NP_001107655.1).
Tested applications	Suitable for: WB
Species reactivity	Reacts with: Human Predicted to work with: Cow, Dog 
Immunogen	Synthetic peptide: KIMQQWKNSDARD with a Cysteine residue linker, corresponding to internal sequence amino acids 265-277 of Human Glutamate Receptor 1 (AMPA subtype) (NP_000818.2; NP_001107655.1). Run BLAST with Run BLAST with
Positive control	Human, Mouse and Rat brain cerebellum lysates.
General notes	The Life Science industry has been in the grips of a reproducibility crisis for a number of years. Abcam is leading the way in addressing this with our range of recombinant monoclonal antibodies and knockout edited cell lines for gold-standard validation. Please check that this product meets your needs before purchasing. If you have any questions, special requirements or concerns, please send us an inquiry and/or contact our Support team ahead of purchase. Recommended alternatives for this product can be found below, along with publications, customer reviews and Q&As

Properties

Form	Liquid
Storage instructions	Shipped at 4°C. Upon delivery aliquot and store at -20°C. Avoid repeated freeze / thaw cycles.
Storage buffer	pH: 7.30 Preservative: 0.02% Sodium azide Constituents: 99% Tris buffered saline, 0.5% BSA
Purity	Immunogen affinity purified

Purification notes	ab116616 is purified from Goat serum by ammonium sulphate precipitation followed by antigen affinity chromatography using the immunizing peptide.
Clonality	Polyclonal
Isotype	IgG

Applications

The Abpromise guarantee Our [Abpromise guarantee](#) covers the use of ab116616 in the following tested applications. The application notes include recommended starting dilutions; optimal dilutions/concentrations should be determined by the end user.

Application	Abreviews	Notes
WB		Use a concentration of 0.1 - 0.3 µg/ml. Detects a band of approximately 100 kDa (predicted molecular weight: 102 kDa). 1 hour primary incubation is recommended for this product.

Target

Function Ionotropic glutamate receptor. L-glutamate acts as an excitatory neurotransmitter at many synapses in the central nervous system. Binding of the excitatory neurotransmitter L-glutamate induces a conformation change, leading to the opening of the cation channel, and thereby converts the chemical signal to an electrical impulse. The receptor then desensitizes rapidly and enters a transient inactive state, characterized by the presence of bound agonist.

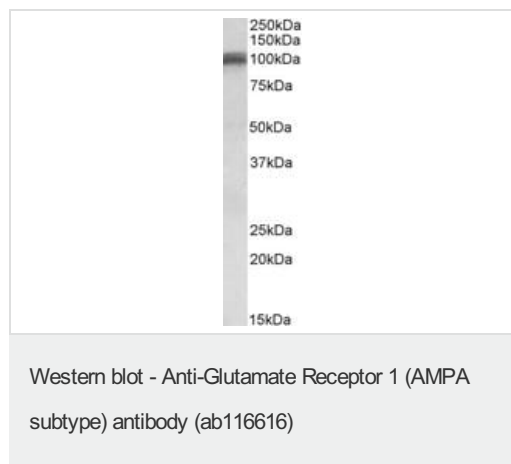
Tissue specificity Widely expressed in brain.

Sequence similarities Belongs to the glutamate-gated ion channel (TC 1.A.10.1) family. GRIA1 subfamily.

Post-translational modifications Palmitoylated. Depalmitoylated upon glutamate stimulation. Cys-603 palmitoylation leads to Golgi retention and decreased cell surface expression. In contrast, Cys-829 palmitoylation does not affect cell surface expression but regulates stimulation-dependent endocytosis.

Cellular localization Cell membrane. Endoplasmic reticulum membrane. Cell junction > synapse > postsynaptic cell membrane. Interaction with CACNG2 promotes cell surface expression.

Images



Anti-Glutamate Receptor 1 (AMPA subtype) antibody (ab116616) at 0.1 µg/ml + Human Cerebellum lysate (in RIPA buffer) at 35 µg

Developed using the ECL technique.

Predicted band size: 102 kDa

Please note: All products are "FOR RESEARCH USE ONLY. NOT FOR USE IN DIAGNOSTIC PROCEDURES"

Our Abpromise to you: Quality guaranteed and expert technical support

- Replacement or refund for products not performing as stated on the datasheet
- Valid for 12 months from date of delivery
- Response to your inquiry within 24 hours

- We provide support in Chinese, English, French, German, Japanese and Spanish
- Extensive multi-media technical resources to help you
- We investigate all quality concerns to ensure our products perform to the highest standards

If the product does not perform as described on this datasheet, we will offer a refund or replacement. For full details of the Abpromise, please visit <https://www.abcam.com/abpromise> or contact our technical team.

Terms and conditions

- Guarantee only valid for products bought direct from Abcam or one of our authorized distributors