


Product datasheet

Anti-Glycerol 3 Phosphate Dehydrogenase antibody ab229140

[5 Images](#)

Overview

Product name	Anti-Glycerol 3 Phosphate Dehydrogenase antibody
Description	Rabbit polyclonal to Glycerol 3 Phosphate Dehydrogenase
Host species	Rabbit
Tested applications	Suitable for: ICC/IF, IHC-P, WB
Species reactivity	Reacts with: Human Predicted to work with: Mouse, Cow, Pig 
Immunogen	Recombinant fragment within Human Glycerol 3 Phosphate Dehydrogenase (internal sequence). The exact sequence is proprietary. Database link: P21695
Positive control	WB: A549 whole cell lysate. IHC-P: D54MG, Mahlarvu and RT2 xenograft tissues. ICC/IF: HeLa cells.

Properties

Form	Liquid
Storage instructions	Shipped at 4°C. Store at +4°C short term (1-2 weeks). Upon delivery aliquot. Store at -20°C long term. Avoid freeze / thaw cycle.
Storage buffer	pH: 7.00 Preservative: 0.01% Thimerosal (merthiolate) Constituents: 1.21% Tris, 0.75% Glycine, 20% Glycerol
Purity	Immunogen affinity purified
Clonality	Polyclonal
Isotype	IgG

Applications

Our [Abpromise guarantee](#) covers the use of **ab229140** in the following tested applications.

The application notes include recommended starting dilutions; optimal dilutions/concentrations should be determined by the end user.

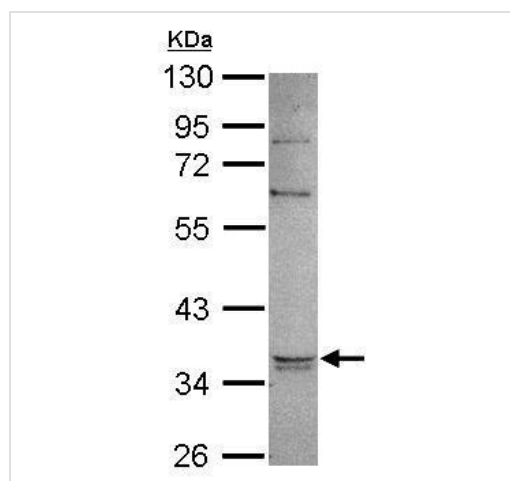
Application	Abreviews	Notes
ICC/IF		1/100 - 1/1000.
IHC-P		1/100 - 1/1000.
WB		1/500 - 1/3000. Predicted molecular weight: 38 kDa.

Target

Sequence similarities Belongs to the NAD-dependent glycerol-3-phosphate dehydrogenase family.

Cellular localization Cytoplasm.

Images

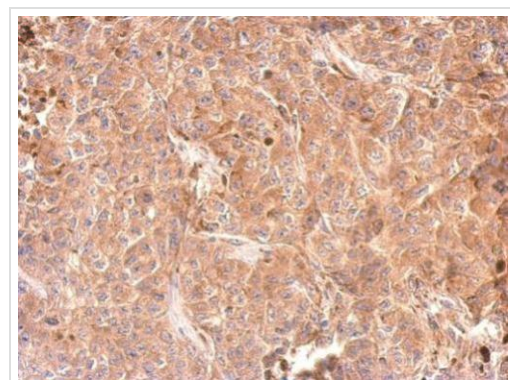


Western blot - Anti-Glycerol 3 Phosphate Dehydrogenase antibody (ab229140)

Anti-Glycerol 3 Phosphate Dehydrogenase antibody (ab229140) at 1/1000 dilution + A549 (human lung carcinoma cell line) whole cell lysate at 30 µg

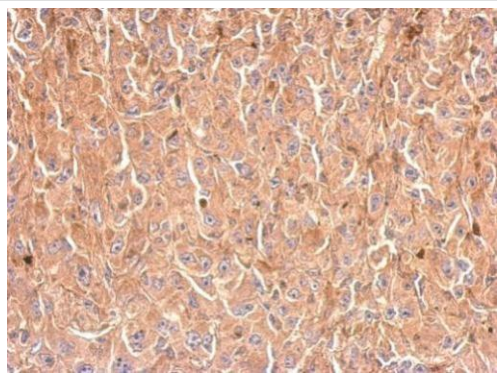
Predicted band size: 38 kDa

10% SDS-PAGE gel.



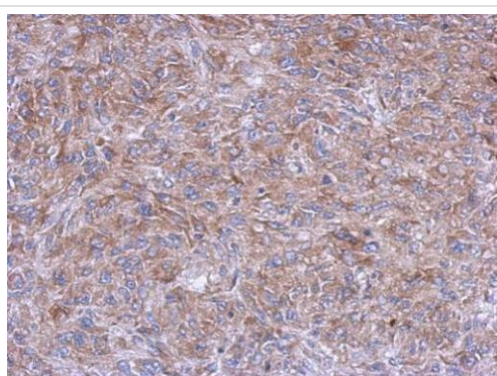
Immunohistochemistry (Formalin/PFA-fixed paraffin-embedded sections) - Anti-Glycerol 3 Phosphate Dehydrogenase antibody (ab229140)

Paraffin-embedded D54MG xenograft tissue stained for Glycerol 3 Phosphate Dehydrogenase using ab229140 at 1/500 dilution in immunohistochemical analysis.



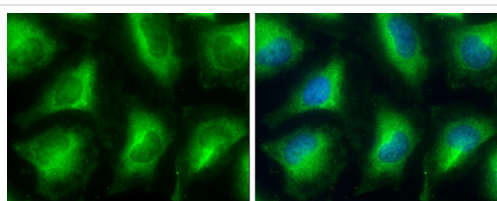
Immunohistochemistry (Formalin/PFA-fixed paraffin-embedded sections) - Anti-Glycerol 3 Phosphate Dehydrogenase antibody (ab229140)

Paraffin-embedded Mahlarvu xenograft tissue stained for Glycerol 3 Phosphate Dehydrogenase using ab229140 at 1/500 dilution in immunohistochemical analysis.



Immunohistochemistry (Formalin/PFA-fixed paraffin-embedded sections) - Anti-Glycerol 3 Phosphate Dehydrogenase antibody (ab229140)

Paraffin-embedded RT2 xenograft tissue stained for Glycerol 3 Phosphate Dehydrogenase using ab229140 at 1/500 dilution in immunohistochemical analysis.



Immunocytochemistry/ Immunofluorescence - Anti-Glycerol 3 Phosphate Dehydrogenase antibody (ab229140)

4% paraformaldehyde-fixed HeLa (human epithelial cell line from cervix adenocarcinoma) cells stained for Glycerol 3 Phosphate Dehydrogenase (green) using ab229140 at 1/500 dilution in ICC/IF. Nuclear counterstain: Hoechst 33342 (blue).

Please note: All products are "FOR RESEARCH USE ONLY. NOT FOR USE IN DIAGNOSTIC PROCEDURES"

Our Abpromise to you: Quality guaranteed and expert technical support

- Replacement or refund for products not performing as stated on the datasheet
- Valid for 12 months from date of delivery

- Response to your inquiry within 24 hours
- We provide support in Chinese, English, French, German, Japanese and Spanish
- Extensive multi-media technical resources to help you
- We investigate all quality concerns to ensure our products perform to the highest standards

If the product does not perform as described on this datasheet, we will offer a refund or replacement. For full details of the Abpromise, please visit <https://www.abcam.com/abpromise> or contact our technical team.

Terms and conditions

- Guarantee only valid for products bought direct from Abcam or one of our authorized distributors