

Product datasheet

Anti-Glycogen synthase 2 antibody - C-terminal ab224552

[2 Images](#)

Overview

Product name	Anti-Glycogen synthase 2 antibody - C-terminal
Description	Rabbit polyclonal to Glycogen synthase 2 - C-terminal
Host species	Rabbit
Tested applications	Suitable for: IHC-P, WB
Species reactivity	Reacts with: Human
Immunogen	Recombinant fragment corresponding to Human Glycogen synthase 2 aa 642-703 (C terminal). Sequence: VPPSPSGSQASSPQSSDVEDEVEDERYDEEEEAERDRL NIKSPFSLSHVP HGKKKLHGEYKN

Database link: [P54840](#)

 [Run BLAST with](#)

 [Run BLAST with](#)

Positive control WB: Human liver tissue lysate. IHC-P: Human liver tissue.

General notes

Reproducibility is key to advancing scientific discovery and accelerating scientists' next breakthrough.

Abcam is leading the way with our range of recombinant antibodies, knockout-validated antibodies and knockout cell lines, all of which support improved reproducibility.

We are also planning to innovate the way in which we present recommended applications and species on our product datasheets, so that only applications & species that have been tested in our own labs, our suppliers or by selected trusted collaborators are covered by our Abpromise™ guarantee.

In preparation for this, we have started to update the applications & species that this product is Abpromise guaranteed for.

We are also updating the applications & species that this product has been "predicted to work with," however this information is not covered by our Abpromise guarantee.

Applications & species from publications and Abreviews that have not been tested in our own labs or in those of our suppliers are not covered by the Abpromise guarantee.

Please check that this product meets your needs before purchasing. If you have any questions, special requirements or concerns, please send us an inquiry and/or contact our Support team ahead of purchase. Recommended alternatives for this product can be found below, as well as

customer reviews and Q&As.

Properties

Form	Liquid
Storage instructions	Shipped at 4°C. Store at +4°C short term (1-2 weeks). Upon delivery aliquot. Store at -20°C long term. Avoid freeze / thaw cycle.
Storage buffer	pH: 7.20 Preservative: 0.02% Sodium azide Constituents: 40% Glycerol (glycerin, glycerine), PBS
Purity	Immunogen affinity purified
Clonality	Polyclonal
Isotype	IgG

Applications

Our [Abpromise guarantee](#) covers the use of **ab224552** in the following tested applications.

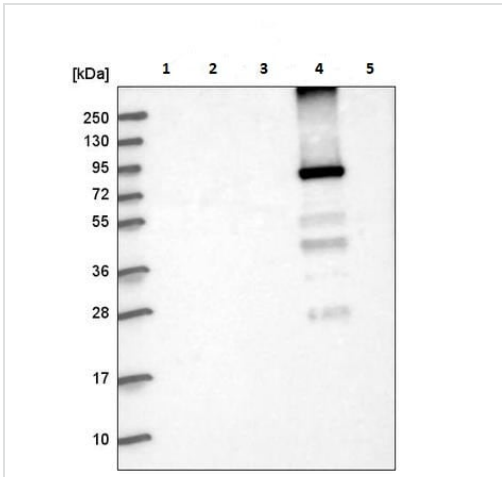
The application notes include recommended starting dilutions; optimal dilutions/concentrations should be determined by the end user.

Application	Abreviews	Notes
IHC-P		1/200 - 1/500. Perform heat mediated antigen retrieval with citrate buffer pH 6 before commencing with IHC staining protocol.
WB		Use a concentration of 0.04 - 0.4 µg/ml. Predicted molecular weight: 81 kDa.

Target

Function	Transfers the glycosyl residue from UDP-Glc to the non-reducing end of alpha-1,4-glucan.
Pathway	Glycan biosynthesis; glycogen biosynthesis.
Involvement in disease	Defects in GYS2 are the cause of glycogen storage disease type 0 (GSD0) [MIM:240600]; A metabolic disorder characterized by fasting hypoglycemia presenting in infancy or early childhood, high blood ketones and low alanine and lactate concentrations. Although feeding relieves symptoms, it often results in postprandial hyperglycemia and hyperlactatemia.
Sequence similarities	Belongs to the glycosyltransferase 3 family.
Post-translational modifications	Primed phosphorylation at Ser-657 (site 5) by CSNK2A1 and CSNK2A2 is required for inhibitory phosphorylation at Ser-641 (site 3a), Ser-645 (site 3b), Ser-649 (site 3c) and Ser-653 (site 4) by GSK3A and GSK3B. Dephosphorylation at Ser-641 and Ser-645 by PP1 activates the enzyme.

Images



Western blot - Anti-Glycogen synthase 2 antibody - C-terminal (ab224552)

All lanes : Anti-Glycogen synthase 2 antibody - C-terminal (ab224552) at 1/100 dilution

Lane 1 : RT4 (human urinary bladder cancer cell line) cell lysate

Lane 2 : U-251 MG (human brain glioma cell line) cell lysate

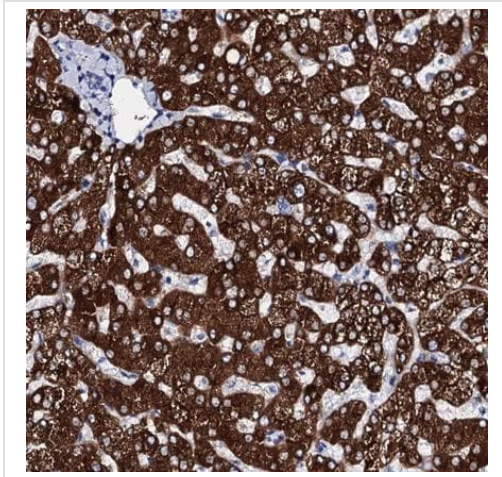
Lane 3 : Human plasma

Lane 4 : Human liver tissue lysate

Lane 5 : Human tonsil tissue lysate

Developed using the ECL technique.

Predicted band size: 81 kDa



Immunohistochemistry (Formalin/PFA-fixed paraffin-embedded sections) - Anti-Glycogen synthase 2 antibody - C-terminal (ab224552)

Paraffin-embedded human liver tissue stained for Glycogen synthase 2 using ab224552 at 1/200 dilution in immunohistochemical analysis.

Please note: All products are "FOR RESEARCH USE ONLY. NOT FOR USE IN DIAGNOSTIC PROCEDURES"

Our Promise to you: Quality guaranteed and expert technical support

- Replacement or refund for products not performing as stated on the datasheet
- Valid for 12 months from date of delivery
- Response to your inquiry within 24 hours
- We provide support in Chinese, English, French, German, Japanese and Spanish
- Extensive multi-media technical resources to help you
- We investigate all quality concerns to ensure our products perform to the highest standards

If the product does not perform as described on this datasheet, we will offer a refund or replacement. For full details of the Abpromise, please visit <https://www.abcam.com/abpromise> or contact our technical team.

Terms and conditions

- Guarantee only valid for products bought direct from Abcam or one of our authorized distributors