

Product datasheet

Anti-Glycophorin C/GPC antibody [Ret40f] ab9521

1 Image

Overview

Product name	Anti-Glycophorin C/GPC antibody [Ret40f]
Description	Mouse monoclonal [Ret40f] to Glycophorin C/GPC
Host species	Mouse
Specificity	This antibody is specific to beta sialoglycophorin also known as Glycophorin C/GPC.
Tested applications	Suitable for: IHC-P, IHC-Fr
Species reactivity	Reacts with: Human
Immunogen	Red cell ghosts.
General notes	Glycophorin C/GPC is found on the human erythrocyte membrane and is one of four sialic acid rich polypeptide. This product was previously labelled as Glycophorin C

Properties

Form	Liquid
Storage instructions	Shipped at 4°C. Store at +4°C short term (1-2 weeks). Store at -20°C or -80°C. Avoid freeze / thaw cycle.
Purity	Tissue culture supernatant
Primary antibody notes	Glycophorin C is found on the human erythrocyte membrane and is one of four sialic acid rich polypeptide.
Clonality	Monoclonal
Clone number	Ret40f
Myeloma	unknown
Isotype	IgG1
Light chain type	kappa

Applications

Our [Abpromise guarantee](#) covers the use of **ab9521** in the following tested applications.

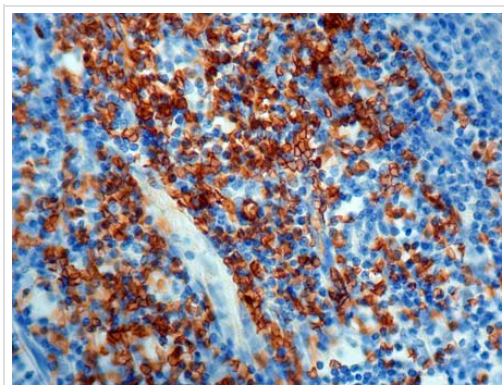
The application notes include recommended starting dilutions; optimal dilutions/concentrations should be determined by the end user.

Application	Abreviews	Notes
IHC-P		Use at an assay dependent concentration.
IHC-Fr		Use at an assay dependent concentration. 1/25-1/100 in an ABC method. Staining Protocol: We suggest an incubation period of 30-60 minutes at room temperature.

Target

Function	This protein is a minor sialoglycoprotein in human erythrocyte membranes. The blood group Gerbich antigens and receptors for Plasmodium falciparum merozoites are most likely located within the extracellular domain. Glycophorin-C plays an important role in regulating the stability of red cells.
Tissue specificity	Glycophorin-C is expressed in erythrocytes. Glycophorin-D is ubiquitous.
Sequence similarities	Belongs to the glycophorin-C family.
Cellular localization	Cell membrane. Linked to the membrane via band 4.1.

Images



Immunohistochemical analysis of formalin-fixed, paraffin-embedded Human tonsil tissue, staining Glycophorin C/GPC with ab9521.

Immunohistochemistry (Formalin/PFA-fixed paraffin-embedded sections) - Anti-Glycophorin C/GPC antibody [Ret40f] (ab9521)

Please note: All products are "FOR RESEARCH USE ONLY. NOT FOR USE IN DIAGNOSTIC PROCEDURES"

Our Abpromise to you: Quality guaranteed and expert technical support

- Replacement or refund for products not performing as stated on the datasheet
- Valid for 12 months from date of delivery
- Response to your inquiry within 24 hours
- We provide support in Chinese, English, French, German, Japanese and Spanish

- Extensive multi-media technical resources to help you
- We investigate all quality concerns to ensure our products perform to the highest standards

If the product does not perform as described on this datasheet, we will offer a refund or replacement. For full details of the Abpromise, please visit <https://www.abcam.com/abpromise> or contact our technical team.

Terms and conditions

- Guarantee only valid for products bought direct from Abcam or one of our authorized distributors