

## Product datasheet

# Anti-Glypican 3 antibody [EPR10641] ab174851

**KO VALIDATED** Recombinant RabMAb<sup>®</sup>

3 Images

### Overview

<b>Product name</b>	Anti-Glypican 3 antibody [EPR10641]
<b>Description</b>	Rabbit monoclonal [EPR10641] to Glypican 3
<b>Host species</b>	Rabbit
<b>Tested applications</b>	<b>Suitable for:</b> Flow Cyt, WB <b>Unsuitable for:</b> ICC/IF, IHC-P or IP
<b>Species reactivity</b>	<b>Reacts with:</b> Human <b>Does not react with:</b> Mouse, Rat
<b>Immunogen</b>	Recombinant fragment within Human Glypican 3. The exact sequence is proprietary. Database link: <a href="#">P51654</a>
<b>Positive control</b>	HepG2 whole cell lysate ( <a href="#">ab7900</a> ); Human fetal liver lysate; HepG2 cells.
<b>General notes</b>	Our RabMAb <sup>®</sup> technology is a patented hybridoma-based technology for making rabbit monoclonal antibodies. For details on our patents, please refer to <a href="#">RabMAb<sup>®</sup> patents</a> .  This product is a <a href="#">recombinant rabbit monoclonal antibody</a> .

### Properties

<b>Form</b>	Liquid
<b>Storage instructions</b>	Shipped at 4°C. Store at +4°C short term (1-2 weeks). Upon delivery aliquot. Store at -20°C long term. Avoid freeze / thaw cycle.
<b>Storage buffer</b>	pH: 7.20 Preservative: 0.01% Sodium azide Constituents: 9% PBS, 40% Glycerol, 0.05% BSA, 50% Tissue culture supernatant
<b>Purity</b>	Tissue culture supernatant
<b>Clonality</b>	Monoclonal
<b>Clone number</b>	EPR10641
<b>Isotype</b>	IgG

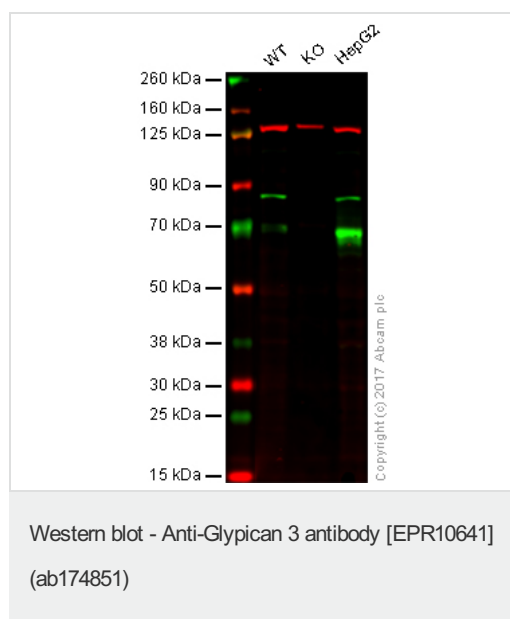
### Applications

Our [Abpromise guarantee](#) covers the use of **ab174851** in the following tested applications.

The application notes include recommended starting dilutions; optimal dilutions/concentrations should be determined by the end user.

Application	Abreviews	Notes
Flow Cyt		1/10 - 1/100. <a href="#">ab172730</a> - Rabbit monoclonal IgG, is suitable for use as an isotype control with this antibody.
WB		1/1000 - 1/5000. Predicted molecular weight: 66 kDa.
<b>Application notes</b>		Is unsuitable for ICC/IF, IHC-P or IP.
<b>Target</b>		
<b>Function</b>		Cell surface proteoglycan that bears heparan sulfate. Inhibits the dipeptidyl peptidase activity of DPP4. May be involved in the suppression/modulation of growth in the predominantly mesodermal tissues and organs. May play a role in the modulation of IGF2 interactions with its receptor and thereby modulate its function. May regulate growth and tumor predisposition.
<b>Tissue specificity</b>		Highly expressed in lung, liver and kidney.
<b>Involvement in disease</b>		Defects in GPC3 are the cause of Simpson-Golabi-Behmel syndrome type 1 (SGBS1) [MIM:312870]; also known as Simpson dysmorphia syndrome (SDYS). SGBS is a condition characterized by pre- and postnatal overgrowth (gigantism) with visceral and skeletal anomalies.
<b>Sequence similarities</b>		Belongs to the glypican family.
<b>Cellular localization</b>		Cell membrane and Secreted > extracellular space.

## Images



**Lane 1:** Wild-type HAP1 whole cell lysate (20 µg)

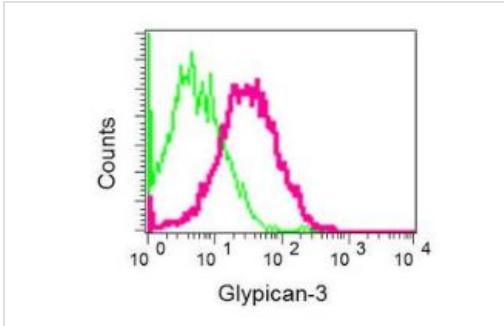
**Lane 2:** GPC3 knockout HAP1 whole cell lysate (20 µg)

**Lane 3:** HepG2 whole cell lysate (20 µg)

**Lanes 1 - 3:** Merged signal (red and green). Green - ab174851 observed at 70 kDa. Red - loading control, [ab130007](#), observed at 125 kDa.

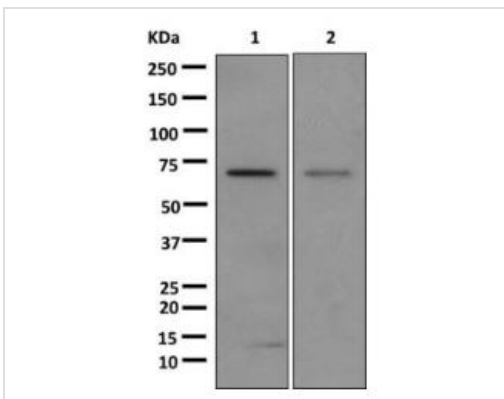
ab174851 was shown to recognize Glypican 3 in wild-type HAP1 cells as signal was lost at the expected MW in GPC3 knockout cells. Additional cross-reactive bands were observed in the wild-type and knockout cells. Wild-type and GPC3 knockout samples were subjected to SDS-PAGE. Ab174851 and [ab130007](#) (Mouse anti-vinculin loading control) were incubated overnight at 4°C at 1/1000 and 1/20000 dilution respectively. Blots were developed with Goat anti-Rabbit IgG H&L (IRDye® 800CW) preabsorbed [ab216773](#) and Goat anti-Mouse IgG H&L (IRDye® 680RD) preabsorbed [ab216776](#) secondary antibodies at 1/10000 dilution

for 1 hour at room temperature before imaging.



Flow Cytometry - Anti-Glypican 3 antibody  
[EPR10641] (ab174851)

Flow cytometric analysis of permeabilized HepG2 cells labeling Glypican 3 using ab174851 at 1/10 dilution (red) or a rabbit IgG negative (green).



Western blot - Anti-Glypican 3 antibody [EPR10641]  
(ab174851)

**All lanes** : Anti-Glypican 3 antibody [EPR10641] (ab174851) at 1/1000 dilution

**Lane 1** : HepG2 cell lysate

**Lane 2** : Human fetal liver lysate

Lysates/proteins at 10 µg per lane.

**Predicted band size:** 66 kDa

**Please note:** All products are "FOR RESEARCH USE ONLY. NOT FOR USE IN DIAGNOSTIC PROCEDURES"

### Our Abpromise to you: Quality guaranteed and expert technical support

- Replacement or refund for products not performing as stated on the datasheet
- Valid for 12 months from date of delivery
- Response to your inquiry within 24 hours
- We provide support in Chinese, English, French, German, Japanese and Spanish
- Extensive multi-media technical resources to help you
- We investigate all quality concerns to ensure our products perform to the highest standards

If the product does not perform as described on this datasheet, we will offer a refund or replacement. For full details of the Abpromise, please visit <https://www.abcam.com/abpromise> or contact our technical team.

### Terms and conditions

- Guarantee only valid for products bought direct from Abcam or one of our authorized distributors