

Product datasheet

Anti-Glypican 4 antibody [EPR11271] ab168364

Recombinant **RabMAb**

★★★★☆ 4 Abreviews 1 References 2 Images

Overview

Product name	Anti-Glypican 4 antibody [EPR11271]
Description	Rabbit monoclonal [EPR11271] to Glypican 4
Host species	Rabbit
Tested applications	Suitable for: WB, IP Unsuitable for: Flow Cyt, ICC/IF or IHC-P
Species reactivity	Reacts with: Mouse, Rat, Human
Immunogen	Synthetic peptide corresponding to Human Glypican 4 aa 1-100.
Positive control	SH-SY5Y, 293T, and K562 cell lysates.
General notes	

Our RabMAb[®] technology is a patented hybridoma-based technology for making rabbit monoclonal antibodies. For details on our patents, please refer to [RabMAb[®] patents](#).

This product is a [recombinant rabbit monoclonal antibody](#).

Properties

Form	Liquid
Storage instructions	Shipped at 4°C. Store at +4°C short term (1-2 weeks). Upon delivery aliquot. Store at -20°C long term.
Storage buffer	Preservative: 0.01% Sodium azide Constituents: 9% PBS, 40% Glycerol, 0.05% BSA, 50% Tissue culture supernatant
Purity	Tissue culture supernatant
Clonality	Monoclonal
Clone number	EPR11271
Isotype	IgG

Applications

Our [Abpromise guarantee](#) covers the use of **ab168364** in the following tested applications.

The application notes include recommended starting dilutions; optimal dilutions/concentrations should be determined by the end user.

Application	Abreviews	Notes
WB	★★★★☆	1/1000 - 1/10000. Predicted molecular weight: 62 kDa.
IP		1/10 - 1/100.

Application notes Is unsuitable for Flow Cyt, ICC/IF or IHC-P.

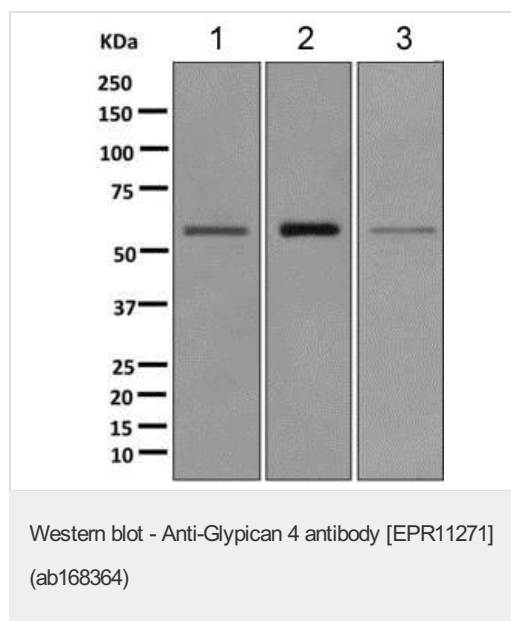
Target

Function Cell surface proteoglycan that bears heparan sulfate. May be involved in the development of kidney tubules and of the central nervous system.

Sequence similarities Belongs to the glypican family.

Cellular localization Cell membrane and Secreted > extracellular space.

Images



All lanes : Anti-Glypican 4 antibody [EPR11271] (ab168364) at 1/1000 dilution

Lane 1 : SH-SY5Y cell lysate

Lane 2 : 293T cell lysate

Lane 3 : K562 cell lysate

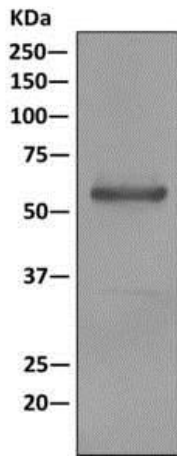
Lysates/proteins at 10 µg per lane.

Secondary

All lanes : Goat anti-rabbit HRP at 1/2000 dilution

Predicted band size: 62 kDa

Secondary antibody - goat [anti-rabbit HRP](#) (ab6721)



Detection of Glypican 4 by Western Blot of Immunoprecipitate. 293T cell lysate immunoprecipitated using ab168364 at 1/10 dilution; HRP-conjugated anti-rabbit IgG preferentially detecting the non-reduced form of rabbit IgG.

Immunoprecipitation - Anti-Glypican 4 antibody
[EPR11271] (ab168364)

Please note: All products are "FOR RESEARCH USE ONLY. NOT FOR USE IN DIAGNOSTIC PROCEDURES"

Our Abpromise to you: Quality guaranteed and expert technical support

- Replacement or refund for products not performing as stated on the datasheet
- Valid for 12 months from date of delivery
- Response to your inquiry within 24 hours
- We provide support in Chinese, English, French, German, Japanese and Spanish
- Extensive multi-media technical resources to help you
- We investigate all quality concerns to ensure our products perform to the highest standards

If the product does not perform as described on this datasheet, we will offer a refund or replacement. For full details of the Abpromise, please visit <https://www.abcam.com/abpromise> or contact our technical team.

Terms and conditions

- Guarantee only valid for products bought direct from Abcam or one of our authorized distributors