




Product datasheet

Anti-GMDS antibody ab238613

2 Images

Overview

Product name	Anti-GMDS antibody
Description	Rabbit polyclonal to GMDS
Host species	Rabbit
Tested applications	Suitable for: IHC-P, ICC/IF
Species reactivity	Reacts with: Human Predicted to work with: Mouse, Chinese hamster 
Immunogen	Recombinant fragment corresponding to Mouse GMDS aa 243-346. Sequence: LDAKRDWGHAKDYVEAMWMLQNDPEPDFVIATGEV HSVREFVEKSFLHI GKTIVWEGKNENEVGRCKETGKVHVTVDLKYYRPTEV DFLQGDCTKAKQK LNWK Database link: O60547  Run BLAST with  Run BLAST with
Positive control	IHC-P: Human breast cancer tissue. ICC/IF: HeLa cells.

Properties

Form	Liquid
Storage instructions	Shipped at 4°C. Store at +4°C short term (1-2 weeks). Upon delivery aliquot. Store at -20°C long term. Avoid freeze / thaw cycle.
Storage buffer	pH: 7.4 Preservative: 0.03% Proclin Constituents: 50% Glycerol, PBS
Purity	Protein G purified
Purification notes	Purity >95%
Clonality	Polyclonal
Isotype	IgG

Applications

Our [Abpromise guarantee](#) covers the use of **ab238613** in the following tested applications.

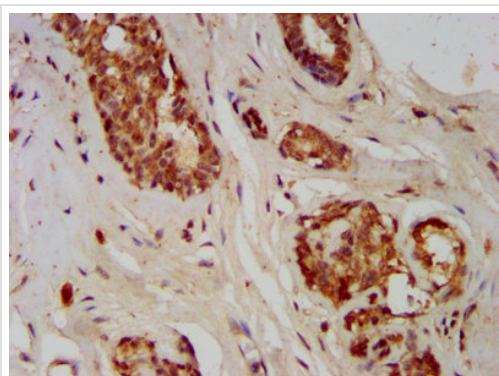
The application notes include recommended starting dilutions; optimal dilutions/concentrations should be determined by the end user.

Application	Abreviews	Notes
IHC-P		1/200 - 1/500.
ICC/IF		1/50 - 1/200.

Target

Function	Conversion of GDP-D-mannose to GDP-4-keto-6-D-deoxymannose.
Pathway	Nucleotide-sugar biosynthesis; GDP-L-fucose biosynthesis via de novo pathway; GDP-L-fucose from GDP-alpha-D-mannose: step 1/2.
Sequence similarities	Belongs to the GDP-mannose 4,6-dehydratase family.

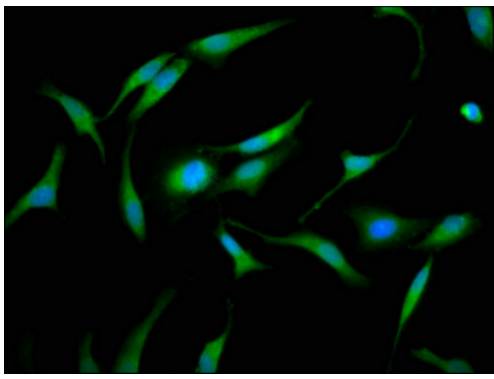
Images



Immunohistochemistry (Formalin/PFA-fixed paraffin-embedded sections) - Anti-GMDS antibody (ab238613)

Paraffin-embedded human breast cancer tissue stained for GMDS using ab238613 at 1/400 dilution in immunohistochemical analysis.

After dewaxing and hydration, antigen retrieval was mediated by high pressure in a citrate buffer (pH 6.0). Section was blocked with 10% normal goat serum 30 minutes at RT. Then primary antibody (1% BSA) was incubated at 4°C overnight. The primary is detected by a biotinylated secondary antibody and visualized using an HRP conjugated SP system.



Immunocytochemistry/ Immunofluorescence - Anti-GMDS antibody (ab238613)

HeLa (human epithelial cell line from cervix adenocarcinoma) cells stained for GMDS (Green) using ab238613 at 1/133 dilution in ICC/IF, followed by Alexa Fluor® 488-conjugated Goat Anti-Rabbit IgG (H+L) secondary antibody.

The cells were fixed in 4% formaldehyde, permeabilized using 0.2% Triton X-100 and blocked in 10% normal Goat Serum. The cells were then incubated with the antibody overnight at 4°C. The nuclear counterstain was DAPI (Blue).

Please note: All products are "FOR RESEARCH USE ONLY. NOT FOR USE IN DIAGNOSTIC PROCEDURES"

Our Abpromise to you: Quality guaranteed and expert technical support

- Replacement or refund for products not performing as stated on the datasheet
- Valid for 12 months from date of delivery
- Response to your inquiry within 24 hours

- We provide support in Chinese, English, French, German, Japanese and Spanish
- Extensive multi-media technical resources to help you
- We investigate all quality concerns to ensure our products perform to the highest standards

If the product does not perform as described on this datasheet, we will offer a refund or replacement. For full details of the Abpromise, please visit <https://www.abcam.com/abpromise> or contact our technical team.

Terms and conditions

- Guarantee only valid for products bought direct from Abcam or one of our authorized distributors