

Product datasheet

Goat monoclonal [RMG02] Anti-Rabbit IgG Fc (Biotin) ab238531

Recombinant

[3 Images](#)

Overview

Product name	Goat monoclonal [RMG02] Anti-Rabbit IgG Fc (Biotin)
Host species	Goat
Target species	Rabbit
Specificity	ab238531 reacts to the Fc region of Rabbit IgG. No cross reactivity with human IgG, rat IgG, or mouse IgG.
Tested applications	Suitable for: ELISA, WB
Minimal cross-reactivity	Human, Mouse, Rat more details
Immunogen	Full length protein corresponding to Rabbit IgG.
Conjugation	Biotin

Properties

Form	Liquid
Storage instructions	Shipped at 4°C. Store at +4°C short term (1-2 weeks). Upon delivery aliquot. Store at -20°C long term. Avoid freeze / thaw cycle. Store In the Dark.
Storage buffer	Preservative: 0.09% Sodium azide Constituents: 1% BSA, 50% Glycerol, PBS
Purity	Protein G purified
Purification notes	ab238531 was purified from an animal origin-free culture supernatant.
Clonality	Monoclonal
Clone number	RMG02
Isotype	IgG

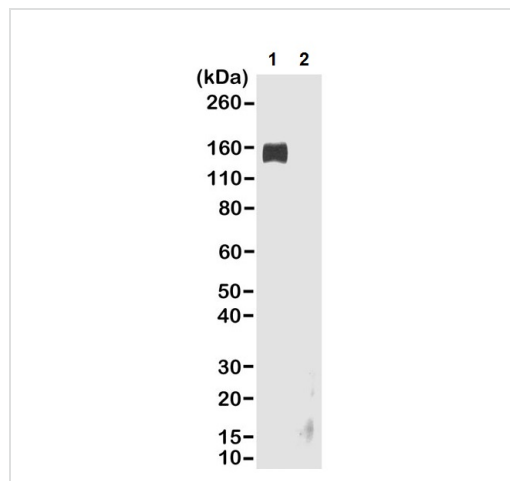
Applications

Our [Abpromise guarantee](#) covers the use of **ab238531** in the following tested applications.

The application notes include recommended starting dilutions; optimal dilutions/concentrations should be determined by the end user.

Application	Abreviews	Notes
ELISA		Use a concentration of 0.01 - 0.5 µg/ml.
WB		Use a concentration of 0.1 - 0.5 µg/ml. Use under non reducing condition. Predicted molecular weight: 150 kDa.

Images



Western blot - Goat monoclonal [RMG02] Anti-Rabbit IgG Fc (Biotin) (ab238531)

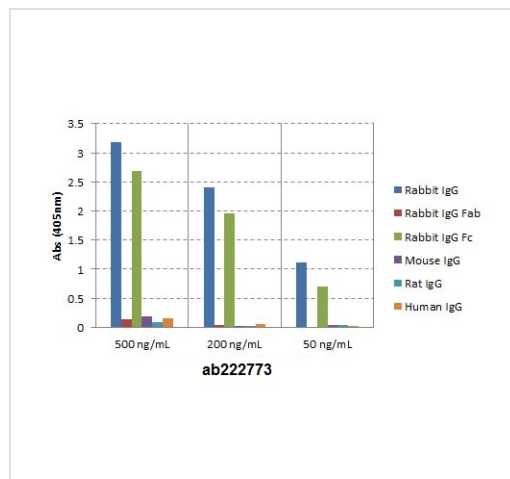
All lanes : Goat monoclonal [RMG02] Anti-Rabbit IgG Fc (Biotin) (ab238531) at 0.2 µg/ml

Lane 1 : Non-reduced rabbit IgG

Lane 2 : Reduced rabbit IgG

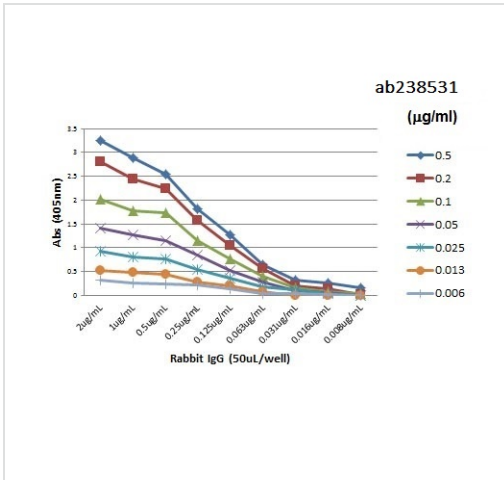
Lysates/proteins at 0.02 µg per lane.

Predicted band size: 150 kDa



ELISA - Goat monoclonal [RMG02] Anti-Rabbit IgG Fc (Biotin) (ab238531)

ELISA of IgGs from different species shows ab238531 reacts to the Fc region of rabbit IgG; no cross reactivity with human IgG, rat IgG, or mouse IgG. The plate was coated with 50 ng/well of different IgG. ab238531 was used as the primary antibody. An alkaline phosphatase conjugated anti-goat IgG as the secondary antibody.



A titer ELISA of rabbit IgG. The plate was coated with different amounts of rabbit IgG. A serial dilution of ab238531 was used as the primary antibody. An alkaline phosphatase conjugated anti-goat IgG as the secondary antibody.

ELISA - Goat monoclonal [RMG02] Anti-Rabbit IgG Fc (Biotin) (ab238531)

Please note: All products are "FOR RESEARCH USE ONLY. NOT FOR USE IN DIAGNOSTIC PROCEDURES"

Our Abpromise to you: Quality guaranteed and expert technical support

- Replacement or refund for products not performing as stated on the datasheet
- Valid for 12 months from date of delivery
- Response to your inquiry within 24 hours
- We provide support in Chinese, English, French, German, Japanese and Spanish
- Extensive multi-media technical resources to help you
- We investigate all quality concerns to ensure our products perform to the highest standards

If the product does not perform as described on this datasheet, we will offer a refund or replacement. For full details of the Abpromise, please visit <https://www.abcam.com/abpromise> or contact our technical team.

Terms and conditions

- Guarantee only valid for products bought direct from Abcam or one of our authorized distributors