

Product datasheet

Goat Anti-Mouse IgG H&L ab182017

1 References 2 Images

Overview

Product name	Goat Anti-Mouse IgG H&L
Host species	Goat
Target species	Mouse
Specificity	The antibody reacts with mouse immunoglobulins of all classes. Cross-reactions as determined by ELISA (see figure below): Chicken IgY, less than 2%. Human IgG, less than 6%. Rabbit IgG, less than 7%. Rat IgG, less than 47%.
Tested applications	Suitable for: ELISA, WB, IHC-P, IP
Immunogen	The details of the immunogen for this antibody are not available.

Properties

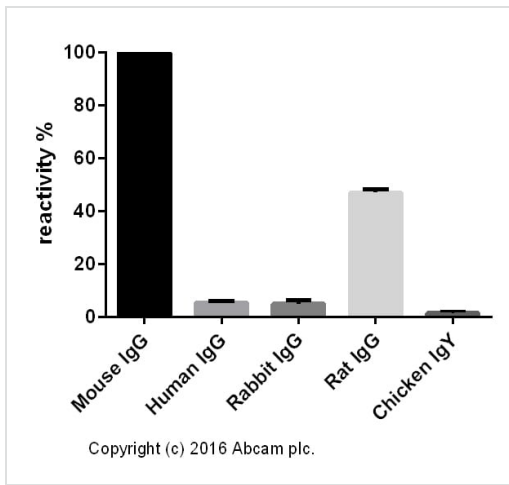
Form	Liquid
Storage instructions	Shipped at 4°C. Store at +4°C short term (1-2 weeks). Upon delivery aliquot. Store at -20°C. Avoid freeze / thaw cycle.
Storage buffer	pH: 7.40 Preservative: 0.02% Sodium azide Constituent: PBS
Purity	Immunogen affinity purified
Purification notes	Immunogen affinity purified - This antibody was isolated by affinity chromatography using antigen coupled to agarose beads.
Clonality	Polyclonal
Isotype	IgG

Applications

The Abpromise guarantee Our [Abpromise guarantee](#) covers the use of ab182017 in the following tested applications. The application notes include recommended starting dilutions; optimal dilutions/concentrations should be determined by the end user.

Application	Abreviews	Notes
ELISA		1/20000 - 1/200000.
WB		Use at an assay dependent concentration.
IHC-P		Use at an assay dependent concentration.
IP		Use at an assay dependent concentration.

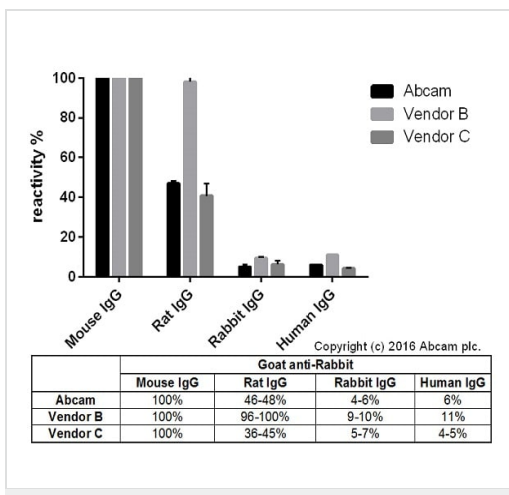
Images



Cross-reactivity of the polyclonal secondary antibody ab182017 was tested using a sandwich ELISA approach. The wells were coated with the indicated IgG standards at 1 µg/ml (50µl/well) and incubated overnight at 4°C, followed by a 5% BSA blocking step for 2h at RT. ab182017 was then added starting at 1 µg/ml and gradually diluted 1/4 (50 µl/well), followed by incubation for 2h. For the detection Donkey anti-Goat IgG H&L (HRP) (ab6885) was used at 1/10,000 dilution (50 µl/well), followed by incubation for 1h at RT.

For the batch tested, ab182017 showed a cross-reactivity below 2% towards Chicken IgY, 6% towards Human IgG, 7% towards Rabbit IgG and 47% towards Rat IgG.

ELISA - Goat Anti-Mouse IgG H&L (ab182017)



Cross-reactivity of Goat anti-Mouse IgG H&L (ab182017) and Goat anti-Mouse IgG H&L obtained from two different vendors was tested using a sandwich ELISA approach. The wells were coated with the indicated IgG standards (Rabbit, Human, Mouse and Rat) at 1 µg/ml (50µl/well) and incubated overnight at 4°C, followed by a 5% BSA blocking step for 2h at RT. Secondary antibodies were then added starting at 1 µg/ml and gradually diluted 1/4 (50 µl/well), followed by incubation for 2h. For the detection Donkey anti-Goat IgG H&L (HRP) (ab6885) was used at 1/10,000 dilution (50 µl/well), followed by incubation for 1h at RT. This data is from a representative dilution.

ELISA - Goat Anti-Mouse IgG H&L (ab182017)

Please note: All products are "FOR RESEARCH USE ONLY. NOT FOR USE IN DIAGNOSTIC PROCEDURES"

Our Abpromise to you: Quality guaranteed and expert technical support

- Replacement or refund for products not performing as stated on the datasheet
- Valid for 12 months from date of delivery
- Response to your inquiry within 24 hours

- We provide support in Chinese, English, French, German, Japanese and Spanish
- Extensive multi-media technical resources to help you
- We investigate all quality concerns to ensure our products perform to the highest standards

If the product does not perform as described on this datasheet, we will offer a refund or replacement. For full details of the Abpromise, please visit <https://www.abcam.com/abpromise> or contact our technical team.

Terms and conditions

- Guarantee only valid for products bought direct from Abcam or one of our authorized distributors