

## Product datasheet

# Goat Anti-Mouse IgG H&L (HRP) ab6789

★★★★★ 2 Abreviews 890 References 4 Images

### Overview

---

<b>Product name</b>	Goat Anti-Mouse IgG H&L (HRP)
<b>Host species</b>	Goat
<b>Target species</b>	Mouse
<b>Tested applications</b>	<b>Suitable for:</b> ICC, IP, Dot blot, ELISA, IHC-P, IHC-Fr, Immunomicroscopy, WB
<b>Immunogen</b>	mouse IgG whole molecule
<b>Conjugation</b>	HRP

### Properties

---

<b>Form</b>	Liquid
<b>Storage instructions</b>	Shipped at 4°C. Store at +4°C. Store In the Dark.
<b>Storage buffer</b>	Preservative: 0.01% Gentamicin sulphate Constituents: 0.878% Sodium chloride, 1% BSA, 0.424% Potassium phosphate
<b>Purity</b>	Affinity purified
<b>Purification notes</b>	This product was prepared from monospecific antiserum by immunoaffinity chromatography using mouse IgG coupled to agarose beads followed by solid phase adsorption(s) to remove any unwanted reactivities.
<b>Conjugation notes</b>	Horseradish Peroxidase (HRP)
<b>Clonality</b>	Polyclonal
<b>Isotype</b>	IgG
<b>General notes</b>	The product can contain small precipitates giving a cloudy appearance. However this does not affect the performance of the product. Leaving the product at room temperature in the dark for a few hours may help. Please use as normal and if you do experience problems, contact Scientific Support.

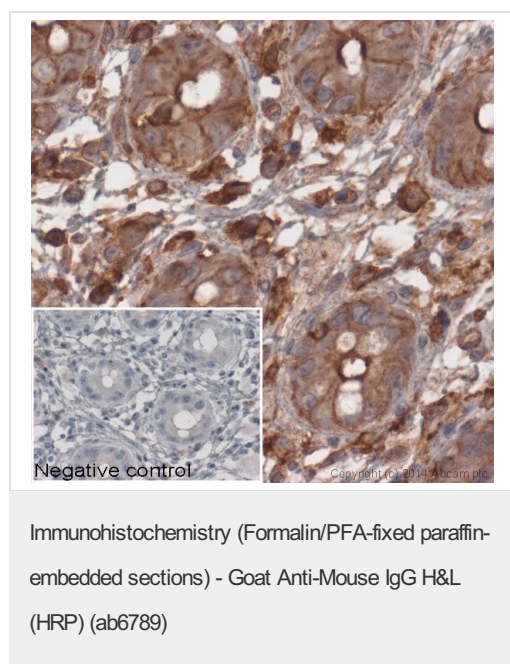
### Applications

---

**The Abpromise guarantee** Our [Abpromise guarantee](#) covers the use of ab6789 in the following tested applications. The application notes include recommended starting dilutions; optimal dilutions/concentrations should be determined by the end user.

Application	Abreviews	Notes
ICC		1/500 - 1/2500.
IP		Use at an assay dependent concentration. PubMed: 17164758
Dot blot		Use at an assay dependent concentration.
ELISA		1/100000.
IHC-P		1/500 - 1/2500.
IHC-Fr		1/500 - 1/2500.
Immunomicroscopy		Use at an assay dependent concentration.
WB	★★★★★ (2)	1/2000 - 1/10000. PubMed: 17413034

## Images

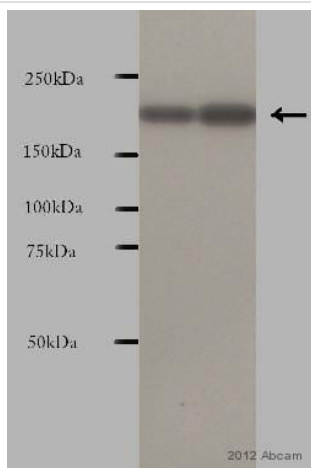


IHC image of beta actin staining in human colon formalin fixed paraffin embedded tissue section\*.

The section was pre-treated using pressure cooker heat mediated antigen retrieval with sodium citrate buffer (pH 6) for 30 mins. The section was incubated with [ab8224](#), 3 µg/ml overnight at +4°C. An HRP-conjugated secondary (ab6789, 1/2000 dilution) was used for 1hr at room temperature. The section was counterstained with hematoxylin and mounted with DPX.

The inset **negative control** image is secondary-only at 1/500 dilution.

\*Tissue obtained from the Human Research Tissue Bank, supported by the NIHR Cambridge Biomedical Research Centre



Western blot - Goat Anti-Mouse IgG H&L (HRP) (ab6789)

This image is courtesy of an anonymous Abreview.

**All lanes :** Anti-CDC42 Binding Protein Kinase Beta antibody (ab61328) at 1/2000 dilution

**All lanes :** Cytosolic fraction prepared from murine brain tissue

Lysates/proteins at 10 µg per lane.

**Secondary**

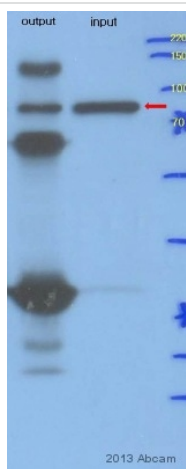
**All lanes :** Goat Anti-Mouse IgG H&L (HRP) (ab6789) at 1/2000 dilution

Developed using the ECL technique.

Performed under reducing conditions.

**Observed band size:** 194 kDa

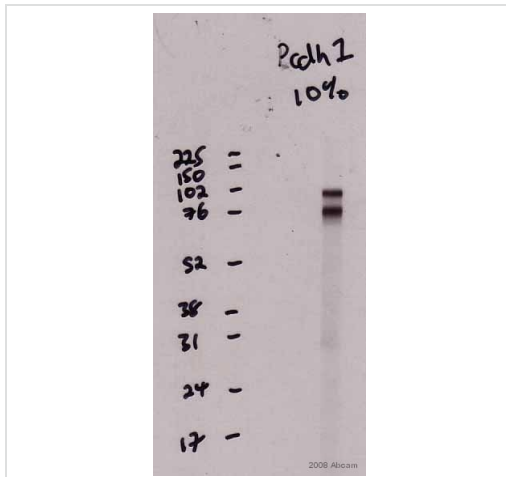
**Exposure time:** 1 minute



Immunoprecipitation - Goat Anti-Mouse IgG H&L (HRP) (ab6789)

This image is courtesy of an anonymous Abreview.

**ab49969** Immunoprecipitating HA Tag in HEK-293T whole cell lysate. 25 µg of cell lysate was incubated with primary antibody (1/2500 in lysis buffer) and matrix (Protein A/G) for 6 hours at 4°C. For western blotting a HRP-conjugated goat anti-mouse IgG H&L (ab6789) (1/1000) was used to confirm successful immunoprecipitation.



Western blot - Goat Anti-Mouse IgG H&L (HRP)  
(ab6789)

ab6789 was used at dilution 1/10000 with the primary antibody  
[ab55504](#) in WB. See the review on [ab55504](#).

**Please note:** All products are "FOR RESEARCH USE ONLY. NOT FOR USE IN DIAGNOSTIC PROCEDURES"

### Our Abpromise to you: Quality guaranteed and expert technical support

---

- Replacement or refund for products not performing as stated on the datasheet
- Valid for 12 months from date of delivery
- Response to your inquiry within 24 hours
- We provide support in Chinese, English, French, German, Japanese and Spanish
- Extensive multi-media technical resources to help you
- We investigate all quality concerns to ensure our products perform to the highest standards

If the product does not perform as described on this datasheet, we will offer a refund or replacement. For full details of the Abpromise, please visit <https://www.abcam.com/abpromise> or contact our technical team.

### Terms and conditions

---

- Guarantee only valid for products bought direct from Abcam or one of our authorized distributors