

Product datasheet

Goat Anti-Mouse IgG1 (HRP) ab97240

★★★★★ 1 Abreviews 73 References 2 Images

Overview

Product name	Goat Anti-Mouse IgG1 (HRP)
Host species	Goat
Target species	Mouse
Specificity	By immunoelectrophoresis and ELISA this antibody reacts specifically with mouse IgG1. Cross reactivity with other immunoglobulins is less than 2%. This antibody may cross react with IgG1 from other species.
Tested applications	Suitable for: ICC, ELISA, IHC-P, WB
Conjugation	HRP

Properties

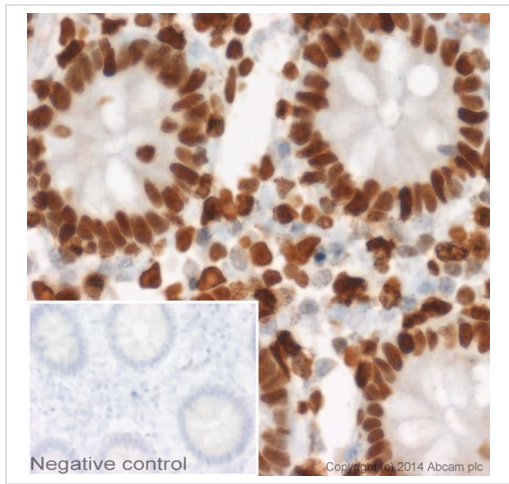
Form	Liquid
Storage instructions	Shipped at 4°C. Store at +4°C.
Storage buffer	pH: 6.8 Constituents: 0.2% BSA, 0.05% CMIT/MIT based preservative
Purity	Immunogen affinity purified
Purification notes	Antiserum was solid phase adsorbed to ensure subclass specificity. This antibody was isolated by affinity chromatography using antigen coupled to agarose beads and conjugated to Horse Radish Peroxidase (HRP).
Conjugation notes	Molar enzyme/ antibody protein ratio is 4:1
Clonality	Polyclonal
Isotype	IgG

Applications

The Abpromise guarantee Our [Abpromise guarantee](#) covers the use of ab97240 in the following tested applications. The application notes include recommended starting dilutions; optimal dilutions/concentrations should be determined by the end user.

Application	Abreviews	Notes
ICC		1/200 - 1/2000.
ELISA		1/10000 - 1/100000.
IHC-P		1/200 - 1/2000.
WB	★★★★★ (1)	1/2000 - 1/20000. Colorimetric method; 1/2000 - 1/20000 Chemiluminescence method.

Images

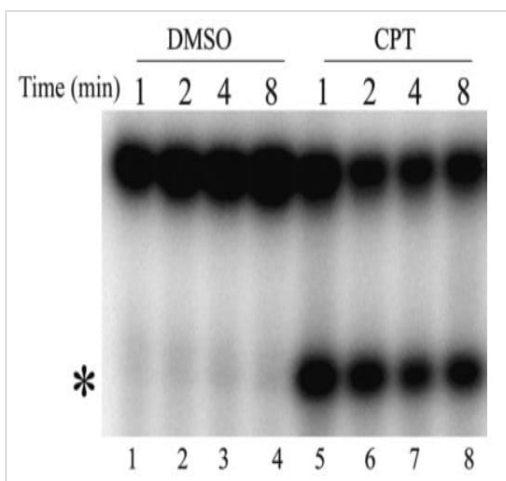


IHC image of Histone H1.0 staining in human colon formalin fixed paraffin embedded tissue section*. The section was pre-treated using pressure cooker heat mediated antigen retrieval with sodium citrate buffer (pH6) for 30mins. The section was incubated with [ab11080](#), 7.5µg/ml overnight at +4°C. An HRP-conjugated secondary (ab97240, 1/2000 dilution) was used for 1hr at room temperature. The section was counterstained with haematoxylin and mounted with DPX.

The inset negative control image is secondary-only at 1/500 dilution.

*Tissue obtained from the Human Research Tissue Bank, supported by the NIHR Cambridge Biomedical Research Centre

Immunohistochemistry (Formalin/PFA-fixed paraffin-embedded sections) - Goat Anti-Mouse IgG1 (HRP) (ab97240)



Western blot - Goat Anti-Mouse IgG1 (HRP)

(ab97240)

Image from Anò B et al., PLOS One, Fig. 2.; doi:
10.1371/journal.pone.0068404 Reproduced under the
Creative Commons license
<http://creativecommons.org/licenses/by/4.0/>

All lanes : Anti-Topoisomerase I antibody ([ab58313](#))

Lane 1 : Products generated by incubation of hTop1 with [³²P] end-labelled duplex DNA (CL25/CP25) incubated in the absence of CPT for 1 minute.

Lane 2 : Products generated by incubation of hTop1 with [³²P] end-labelled duplex DNA (CL25/CP25) incubated in the absence of CPT for 2 minutes.

Lane 3 : Products generated by incubation of hTop1 with [³²P] end-labelled duplex DNA (CL25/CP25) incubated in the absence of CPT for 4 minutes.

Lane 4 : Products generated by incubation of hTop1 with [³²P] end-labelled duplex DNA (CL25/CP25) incubated in the absence of CPT for 8 minutes.

Lane 5 : Products generated by incubation of hTop1 with [³²P] end-labelled duplex DNA (CL25/CP25) incubated in the presence of CPT for 1 minute.

Lane 6 : Products generated by incubation of hTop1 with [³²P] end-labelled duplex DNA (CL25/CP25) incubated in the presence of CPT for 2 minutes.

Lane 7 : Products generated by incubation of hTop1 with [³²P] end-labelled duplex DNA (CL25/CP25) incubated in the presence of CPT for 4 minutes.

Lane 8 : Products generated by incubation of hTop1 with [³²P] end-labelled duplex DNA (CL25/CP25) incubated in the presence of CPT for 8 minutes.

Secondary

All lanes : Goat Anti-Mouse IgG1 (HRP) ([ab97240](#))

The band corresponding to the enzyme–substrate cleaved complex, has been indicated by an asterisk.

Please note: All products are "FOR RESEARCH USE ONLY. NOT FOR USE IN DIAGNOSTIC PROCEDURES"

Our Abpromise to you: Quality guaranteed and expert technical support

- Replacement or refund for products not performing as stated on the datasheet
- Valid for 12 months from date of delivery
- Response to your inquiry within 24 hours
- We provide support in Chinese, English, French, German, Japanese and Spanish
- Extensive multi-media technical resources to help you

- We investigate all quality concerns to ensure our products perform to the highest standards

If the product does not perform as described on this datasheet, we will offer a refund or replacement. For full details of the Abpromise, please visit <https://www.abcam.com/abpromise> or contact our technical team.

Terms and conditions

- Guarantee only valid for products bought direct from Abcam or one of our authorized distributors