

Product datasheet

Goat Anti-Rabbit IgG H&L ab182016

[3 References](#) [2 Images](#)

Overview

Product name	Goat Anti-Rabbit IgG H&L
Host species	Goat
Target species	Rabbit
Specificity	The antibody reacts with rabbit immunoglobulins of all classes. Cross-reactions as determined by ELISA (see figure below): Mouse IgG, rat IgG, and chicken IgY, less than 2%. Human IgG, less than 7%.
Tested applications	Suitable for: IP, IHC-P, WB, ELISA
Immunogen	The details of the immunogen for this antibody are not available.

Properties

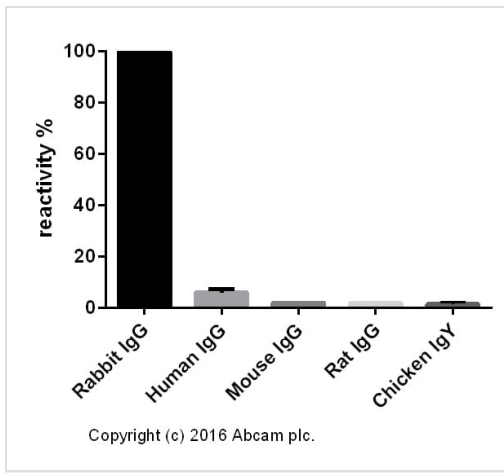
Form	Liquid
Storage instructions	Shipped at 4°C. Store at +4°C short term (1-2 weeks). Upon delivery aliquot. Store at -20°C. Avoid freeze / thaw cycle.
Storage buffer	pH: 7.40 Preservative: 0.02% Sodium azide Constituent: PBS
Purity	Affinity purified
Purification notes	Immunogen affinity purified - This antibody was isolated by affinity chromatography using antigen coupled to agarose beads.
Clonality	Polyclonal
Isotype	IgG

Applications

The Abpromise guarantee Our [Abpromise guarantee](#) covers the use of ab182016 in the following tested applications. The application notes include recommended starting dilutions; optimal dilutions/concentrations should be determined by the end user.

Application	Abreviews	Notes
IP		Use at an assay dependent concentration.
IHC-P		Use at an assay dependent concentration.
WB		Use at an assay dependent concentration.
ELISA		1/20000 - 1/200000.

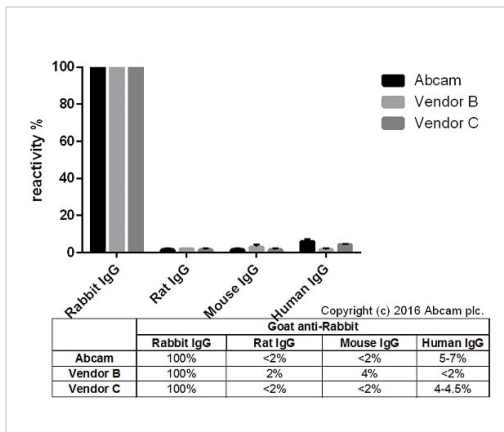
Images



ELISA - Goat Anti-Rabbit IgG H&L (ab182016)

Cross-reactivity of the polyclonal secondary antibody ab182016 was tested using a sandwich ELISA approach. The wells were coated with the indicated IgG standards at 1 µg/ml (50 µl/well) and incubated overnight at 4°C, followed by a 5% BSA blocking step for 2h at RT. ab182016 was then added starting at 1 µg/ml and gradually diluted 1/4 (50 µl/well), followed by incubation for 2h. For the detection Donkey anti-Goat IgG H&L (HRP) ([ab6885](#)) was used at 1/10,000 dilution (50 µl/well), followed by incubation for 1h at RT.

For the batch tested, ab182016 showed a cross-reactivity of 5-7% towards Human IgG and below 2% towards Mouse IgG, Rat IgG and Chicken IgY.



ELISA - Goat Anti-Rabbit IgG H&L (ab182016)

Cross-reactivity of Goat anti-Rabbit IgG H&L (ab182016) and Goat anti-Rabbit IgG H&L obtained from two different vendors was tested using a sandwich ELISA approach. The wells were coated with the indicated IgG standards (Rabbit, Human, Mouse and Rat) at 1 µg/ml (50 µl/well) and incubated overnight at 4°C, followed by a 5% BSA blocking step for 2h at RT. Secondary antibodies were then added starting at 1 µg/ml and gradually diluted 1/4 (50 µl/well), followed by incubation for 2h. For the detection Donkey anti-Goat IgG H&L (HRP) ([ab6885](#)) was used at 1/10,000 dilution (50 µl/well), followed by incubation for 1h at RT. This data is from a representative dilution.

Please note: All products are "FOR RESEARCH USE ONLY. NOT FOR USE IN DIAGNOSTIC PROCEDURES"

Our Promise to you: Quality guaranteed and expert technical support

- Replacement or refund for products not performing as stated on the datasheet

- Valid for 12 months from date of delivery
- Response to your inquiry within 24 hours

- We provide support in Chinese, English, French, German, Japanese and Spanish
- Extensive multi-media technical resources to help you
- We investigate all quality concerns to ensure our products perform to the highest standards

If the product does not perform as described on this datasheet, we will offer a refund or replacement. For full details of the Abpromise, please visit <https://www.abcam.com/abpromise> or contact our technical team.

Terms and conditions

- Guarantee only valid for products bought direct from Abcam or one of our authorized distributors