

Product datasheet

Goat Anti-Rabbit IgG H&L (HRP) preadsorbed ab97080

★★★★☆ 2 Abreviews 115 References 2 Images

Overview

Product name	Goat Anti-Rabbit IgG H&L (HRP) preadsorbed
Host species	Goat
Target species	Rabbit
Specificity	By immunoelectrophoresis and ELISA this antibody reacts specifically with Rabbit IgG and with light chains common to other Rabbit immunoglobulins. No antibody was detected against non immunoglobulin serum proteins. Reduced cross-reactivity to bovine, chicken, goat, horse, human, mouse, pig and rat IgG was detected.
Tested applications	Suitable for: ICC, IHC-P, ELISA, WB
Minimal cross-reactivity	Chicken, Cow, Horse, Human, Mouse, Pig, Rat more details
Conjugation	HRP

Properties

Form	Liquid
Storage instructions	Shipped at 4°C. Store at +4°C.
Storage buffer	pH: 6.8 Constituents: 0.2% BSA, 0.05% CMIT/MIT based preservative
Purity	Immunogen affinity purified
Purification notes	Antiserum was cross absorbed using bovine, chicken, horse, human, mouse, pig and rat immunosorbents to remove cross reactive antibodies. This antibody was isolated by affinity chromatography using antigen coupled to agarose beads and conjugated to Horse Radish Peroxidase (HRP).
Clonality	Polyclonal
Isotype	IgG

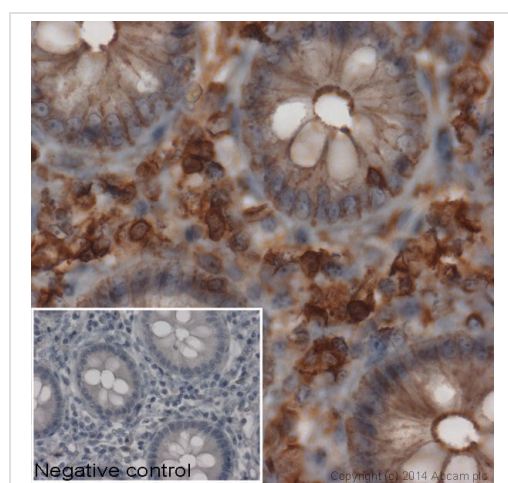
Applications

The Abpromise guarantee Our [Abpromise guarantee](#) covers the use of ab97080 in the following tested applications.

The application notes include recommended starting dilutions; optimal dilutions/concentrations should be determined by the end user.

Application	Abreviews	Notes
ICC		Use at an assay dependent concentration.
IHC-P		1/200 - 1/5000.
ELISA		1/25000 - 1/75000. as primary.
WB	★★★★★ (1)	1/5000 - 1/50000. Colorimetric: 1/5000 - 1/30000; Chemiluminescent: 1/10000 - 1/50000.

Images

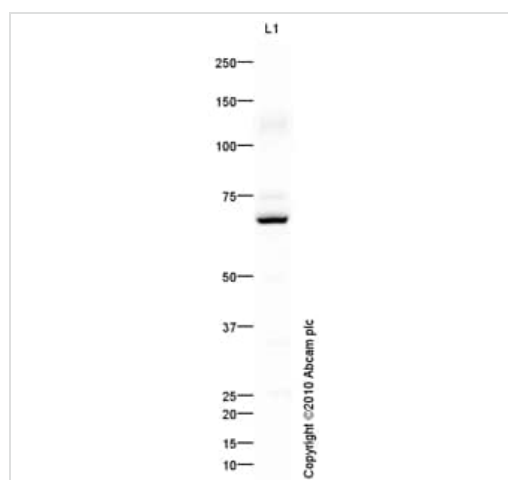


Immunohistochemistry (Formalin/PFA-fixed paraffin-embedded sections) - Goat Anti-Rabbit IgG H&L (HRP) preadsorbed (ab97080)

IHC image of beta Actin staining in normal human colon, formalin-fixed and paraffin-embedded tissue*. The section was pre-treated using pressure cooker heat mediated antigen retrieval with sodium citrate buffer (pH6) for 30mins. The section was incubated with [ab8227](#), 3µg/ml overnight at +4°C. An HRP-conjugated secondary (Ab97080, 1/2000 dilution) was used for 1hr at room temperature. The section was counterstained with haematoxylin and mounted with DPX.

The inset negative control image is secondary-only at 1/500 dilution.

*Tissue obtained from the Human Research Tissue Bank, supported by the NIHR Cambridge Biomedical Research Centre



Western blot - Goat Anti-Rabbit IgG H&L (HRP) preadsorbed (ab97080)

Goat polyclonal Secondary Antibody to Rabbit IgG - H&L (HRP), pre-adsorbed (ab97080) at 1/5000 dilution developed using the ECL technique, with [ab87342](#).

Please note: All products are "FOR RESEARCH USE ONLY. NOT FOR USE IN DIAGNOSTIC PROCEDURES"

Our Abpromise to you: Quality guaranteed and expert technical support

- Replacement or refund for products not performing as stated on the datasheet
- Valid for 12 months from date of delivery
- Response to your inquiry within 24 hours

- We provide support in Chinese, English, French, German, Japanese and Spanish
- Extensive multi-media technical resources to help you
- We investigate all quality concerns to ensure our products perform to the highest standards

If the product does not perform as described on this datasheet, we will offer a refund or replacement. For full details of the Abpromise, please visit <https://www.abcam.com/abpromise> or contact our technical team.

Terms and conditions

- Guarantee only valid for products bought direct from Abcam or one of our authorized distributors