

Product datasheet

Goat Anti-Rabbit IgG H&L (IRDye® 680RD) preadsorbed ab216777

4 References 3 Images

Overview

Product name	Goat Anti-Rabbit IgG H&L (IRDye® 680RD) preadsorbed
Description	Goat Anti-Rabbit IgG H&L (IRDye® 680RD) preadsorbed
Host species	Goat
Target species	Rabbit
Tested applications	Suitable for: WB, In-Cell ELISA
Minimal cross-reactivity	Chicken, Human, Mouse, Rat, Sheep more details
Immunogen	Full length protein corresponding to Rabbit IgG.
Conjugation	IRDye® 680RD

Properties

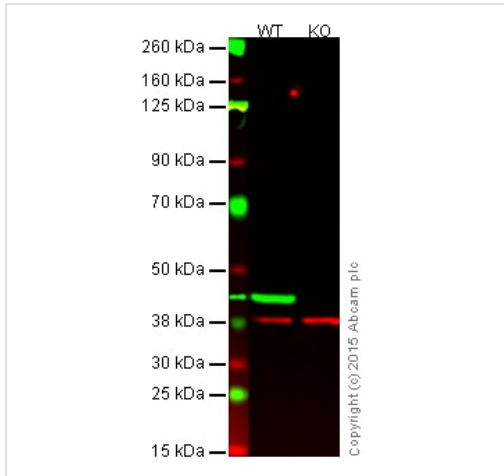
Form	Liquid
Storage instructions	Shipped at 4°C. Store at +4°C short term (1-2 weeks). Upon delivery aliquot. Store at -20°C long term. Avoid freeze / thaw cycle. Store In the Dark.
Storage buffer	Preservative: 0.01% Sodium azide Constituent: PBS Contains 10 mg/mL BSA (free of IgG and protease) as stabilizer.
Purity	Affinity purified
Purification notes	Affinity chromatography purified using pooled IgG covalently linked to agarose.
Clonality	Polyclonal
Isotype	IgG

Applications

The Abpromise guarantee Our [Abpromise guarantee](#) covers the use of ab216777 in the following tested applications. The application notes include recommended starting dilutions; optimal dilutions/concentrations should be determined by the end user.

Application	Abreviews	Notes
WB		1/5000 - 1/25000.
In-Cell ELISA		1/200 - 1/800.

Images



Western blot - Goat Anti-Rabbit IgG H&L (IRDye® 680RD) preadsorbed (ab216777)

All lanes : Anti-GAPDH antibody [EPR16891] - Loading Control ([ab181602](#)) at 1/10000 dilution (Anti-GAPDH antibody)

Lane 1 : Wild-type HAP1 cell lysate (20 µg)

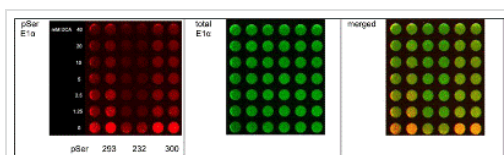
Lane 2 : Beta actin knockout HAP1 cell lysate (20 µg)

Secondary

All lanes : Goat Anti-Rabbit IgG H&L (IRDye® 680RD) preadsorbed (ab216777) at 1/10000 dilution (Goat anti-Mouse IgG H&L (IRDye® 680RD))

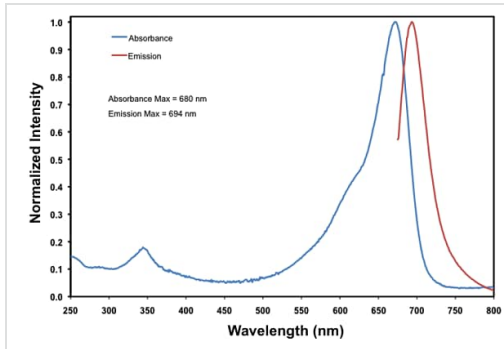
This blot was produced using a 4-12% Bis-tris gel under the MES buffer system. The gel was run at 200V for 50 minutes before being transferred onto a Nitrocellulose membrane at 30V for 70 minutes. The membrane was then blocked for an hour before being incubated with Anti-GAPDH antibody [ab181602](#) overnight at 4°C. Antibody binding was detected using the Goat Anti-Rabbit IgG H&L (IRDye® 680RD) preadsorbed (ab216777) at a 1:10,000 dilution for 1hr at room temperature and then imaged using the Licor Odyssey CLx.

Image shows merged signal (red and green). Green - Anti-beta Actin antibody [AC-15] ([ab6276](#))[ab6276](#) observed at 42 kDa. Red - GAPDH loading control, [ab181602](#), observed at 37 kDa.



In-Cell ELISA - Goat Anti-Rabbit IgG H&L (IRDye® 680RD) preadsorbed (ab216777)

Image taken from In-cell ELISA PhosphoPDH Kit ([ab110218](#)), which uses Goat anti-mouse IgG H&L (IRDye® 680RD) preadsorbed ab216777 for detection among its components.



Excitation and emission spectra of IRDye® 680RD Ex: 680, Em:694.

Spectrum - Goat Anti-Rabbit IgG H&L (IRDye® 680RD) preadsorbed (ab216777)

Please note: All products are "FOR RESEARCH USE ONLY. NOT FOR USE IN DIAGNOSTIC PROCEDURES"

Our Abpromise to you: Quality guaranteed and expert technical support

- Replacement or refund for products not performing as stated on the datasheet
- Valid for 12 months from date of delivery
- Response to your inquiry within 24 hours
- We provide support in Chinese, English, French, German, Japanese and Spanish
- Extensive multi-media technical resources to help you
- We investigate all quality concerns to ensure our products perform to the highest standards

If the product does not perform as described on this datasheet, we will offer a refund or replacement. For full details of the Abpromise, please visit <https://www.abcam.com/abpromise> or contact our technical team.

Terms and conditions

- Guarantee only valid for products bought direct from Abcam or one of our authorized distributors