


Product datasheet

Anti-GP2 antibody ab105503

2 Images

Overview

Product name	Anti-GP2 antibody
Description	Rabbit polyclonal to GP2
Host species	Rabbit
Tested applications	Suitable for: IHC-P, WB
Species reactivity	Reacts with: Human Predicted to work with: Mouse, Rat, Horse 
Immunogen	Synthetic peptide corresponding to Human GP2 aa 182-231 (internal sequence). Sequence: SLQAALQPIVSSLNVSDGNGEFIVRMALFQDQNYTNP YEGDAVELSVES Run BLAST with Run BLAST with
Positive control	Human fetal heart lysate
General notes	Protein previously labeled as Glycoprotein 2 (zymogen granule membrane).

Properties

Form	Liquid
Storage instructions	Shipped at 4°C. Upon delivery aliquot and store at -20°C. Avoid repeated freeze / thaw cycles.
Storage buffer	Preservative: 0.09% Sodium azide Constituents: 2% Sucrose, PBS
Purity	Immunogen affinity purified
Clonality	Polyclonal
Isotype	IgG

Applications

Our [Abpromise guarantee](#) covers the use of **ab105503** in the following tested applications.

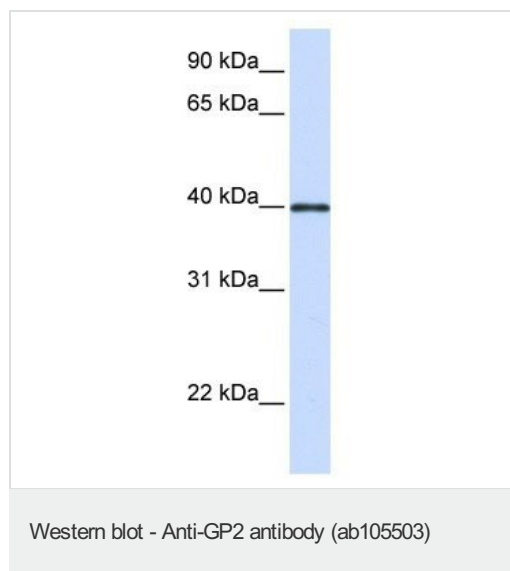
The application notes include recommended starting dilutions; optimal dilutions/concentrations should be determined by the end user.

Application	Abreviews	Notes
IHC-P		Use a concentration of 4 - 8 µg/ml.
WB		Use a concentration of 1 µg/ml. Predicted molecular weight: 43 kDa. Good results were obtained when blocked with 5% non-fat dry milk in 0.05% PBS-T.

Target

Tissue specificity	Pancreatic secretory (zymogen) granule.
Sequence similarities	Contains 1 EGF-like domain. Contains 1 ZP domain.
Cellular localization	Cell membrane. Secreted. Secreted after cleavage in the pancreatic juice.

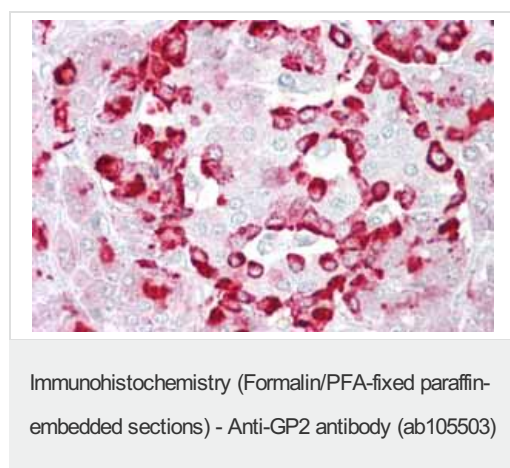
Images



Anti-GP2 antibody (ab105503) at 1 µg/ml + Human fetal heart lysate at 10 µg

Predicted band size: 43 kDa

Gel concentration: 12%



Immunohistochemistry (Formalin/PFA-fixed paraffin-embedded sections) analysis of human pancreas tissue labelling GP2 (zymogen granule membrane) with ab105503 at 4-8µg/ml.

Please note: All products are "FOR RESEARCH USE ONLY. NOT FOR USE IN DIAGNOSTIC PROCEDURES"

Our Abpromise to you: Quality guaranteed and expert technical support

- Replacement or refund for products not performing as stated on the datasheet
- Valid for 12 months from date of delivery
- Response to your inquiry within 24 hours

- We provide support in Chinese, English, French, German, Japanese and Spanish
- Extensive multi-media technical resources to help you
- We investigate all quality concerns to ensure our products perform to the highest standards

If the product does not perform as described on this datasheet, we will offer a refund or replacement. For full details of the Abpromise, please visit <https://www.abcam.com/abpromise> or contact our technical team.

Terms and conditions

- Guarantee only valid for products bought direct from Abcam or one of our authorized distributors