

Product datasheet

Anti-GPCR GPR15 antibody ab8104

[1 Abreviews](#) [2 References](#) [2 Images](#)

Overview

Product name	Anti-GPCR GPR15 antibody
Description	Rabbit polyclonal to GPCR GPR15
Host species	Rabbit
Tested applications	Suitable for: WB
Species reactivity	Reacts with: Human
Immunogen	Synthetic peptide corresponding to Human GPCR GPR15 aa 1-100. (Peptide available as ab6101)
General notes	<p>Human immunodeficiency virus (HIV) and related viruses require co-receptors to infect target cells. Some G protein coupled receptors including CCR5, CXCR4, CCR3, CCR2b and CCR8 in the chemokine receptor family, and four new human molecules GPR15, STRL33, GPR1 and V28 were recently identified as HIV coreceptors. The genes encoding human and monkey GPR15/BOB (for G protein-coupled receptor 15 and brother of Bonzo, respectively) were recently cloned. This novel G protein-coupled receptor serves as coreceptor for simian immunodeficiency virus (SIV), and for strains of HIV-2 and M-tropic HIV-1. The ligand for GPR15 has not been identified yet.</p> <p>The Life Science industry has been in the grips of a reproducibility crisis for a number of years. Abcam is leading the way in addressing this with our range of recombinant monoclonal antibodies and knockout edited cell lines for gold-standard validation. Please check that this product meets your needs before purchasing.</p> <p>If you have any questions, special requirements or concerns, please send us an inquiry and/or contact our Support team ahead of purchase. Recommended alternatives for this product can be found below, along with publications, customer reviews and Q&As</p>

Properties

Form	Liquid
Storage instructions	Shipped at 4°C. Store at +4°C short term (1-2 weeks). Store at -20°C long term. Avoid freeze / thaw cycle.
Storage buffer	pH: 7.2 Preservative: 0.02% Sodium azide
Purity	Immunogen affinity purified

Primary antibody notes

Human immunodeficiency virus (HIV) and related viruses require co-receptors to infect target cells. Some G protein coupled receptors including CCR5, CXCR4, CCR3, CCR2b and CCR8 in the chemokine receptor family, and four new human molecules GPR15, STRL33, GPR1 and V28 were recently identified as HIV coreceptors. The genes encoding human and monkey GPR15/BOB (for G protein-coupled receptor 15 and brother of Bonzo, respectively) were recently cloned. This novel G protein-coupled receptor serves as coreceptor for simian immunodeficiency virus (SIV), and for strains of HIV-2 and M-tropic HIV-1. The ligand for GPR15 has not been identified yet.

Clonality

Polyclonal

Isotype

IgG

Applications

The Abpromise guarantee

Our [Abpromise guarantee](#) covers the use of ab8104 in the following tested applications.

The application notes include recommended starting dilutions; optimal dilutions/concentrations should be determined by the end user.

Application	Abreviews	Notes
WB		1/500 - 1/2000. Detects a band of approximately 50 kDa.

Target

Function

Probable chemokine receptor. Alternative coreceptor with CD4 for HIV-1 infection.

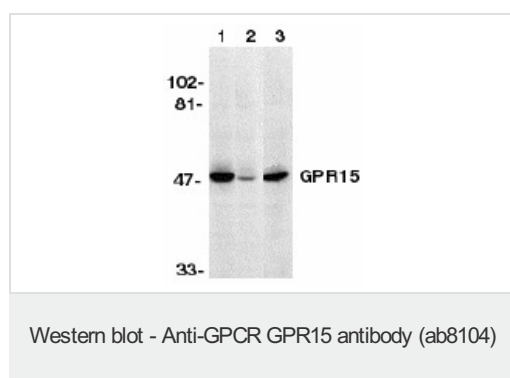
Sequence similarities

Belongs to the G-protein coupled receptor 1 family.

Cellular localization

Cell membrane.

Images



All lanes : Anti-GPCR GPR15 antibody (ab8104)

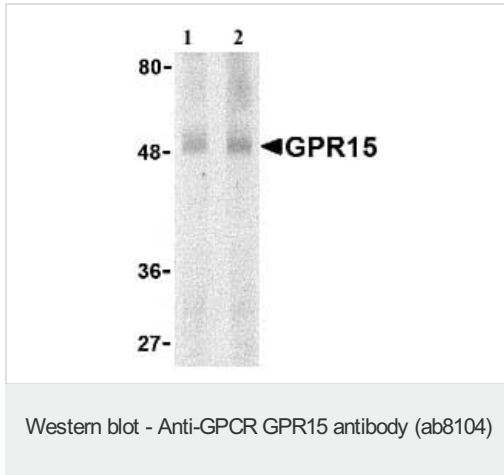
Lane 1 : Human heart lysate in absence of specific peptide

Lane 2 : Human heart lysate in presence of specific peptide

Lane 3 : Human heart lysate in presence of unrelated peptide

Observed band size: 50 kDa

Western blot analysis of GPR15 in human heart lysate with anti-GPR15 (NT) in the absence (lane 1) or presence of specific peptide (lane 2) or non related peptide (lane 3).



Lane 1 : Anti-GPCR GPR15 antibody (ab8104) at 0.5 µg/ml

Lane 2 : Anti-GPCR GPR15 antibody (ab8104) at 1 µg/ml

All lanes : Human spleen lysate

Observed band size: 50 kDa

Please note: All products are "FOR RESEARCH USE ONLY. NOT FOR USE IN DIAGNOSTIC PROCEDURES"

Our Abpromise to you: Quality guaranteed and expert technical support

- Replacement or refund for products not performing as stated on the datasheet
- Valid for 12 months from date of delivery
- Response to your inquiry within 24 hours
- We provide support in Chinese, English, French, German, Japanese and Spanish
- Extensive multi-media technical resources to help you
- We investigate all quality concerns to ensure our products perform to the highest standards

If the product does not perform as described on this datasheet, we will offer a refund or replacement. For full details of the Abpromise, please visit <https://www.abcam.com/abpromise> or contact our technical team.

Terms and conditions

- Guarantee only valid for products bought direct from Abcam or one of our authorized distributors