


Product datasheet

Anti-GPCR GPR3 antibody - Extracellular domain
ab219786

2 Images

Overview

Product name	Anti-GPCR GPR3 antibody - Extracellular domain
Description	Rabbit polyclonal to GPCR GPR3 - Extracellular domain
Host species	Rabbit
Specificity	BLAST analysis of the peptide immunogen showed no homology with other human proteins.
Tested applications	Suitable for: IHC-P
Species reactivity	Reacts with: Human Predicted to work with: Mouse, Rat, Rabbit, Hamster, Monkey, Gorilla 
Immunogen	Synthetic peptide corresponding to Human GPCR GPR3 (extracellular). (15 amino acid peptide from the 2nd extracellular domain). Database link: P46089
Positive control	IHC-P: Human brain (neurons and glia) and ovary carcinoma tissues.

Properties

Form	Liquid
Storage instructions	Shipped at 4°C. Store at +4°C short term (1-2 weeks). Upon delivery aliquot. Store at -20°C long term. Avoid freeze / thaw cycle.
Storage buffer	Preservative: 0.099% Sodium azide Constituent: 99% PBS
Purity	Immunogen affinity purified
Clonality	Polyclonal
Isotype	IgG

Applications

Our [Abpromise guarantee](#) covers the use of **ab219786** in the following tested applications.

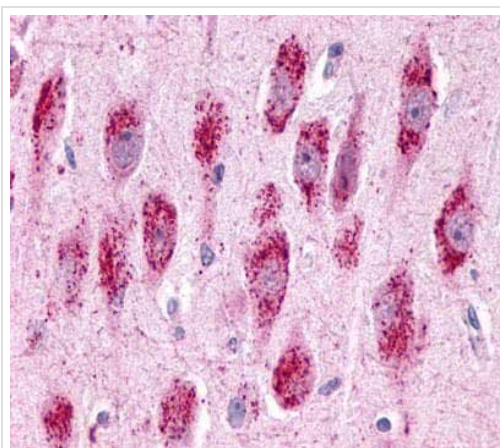
The application notes include recommended starting dilutions; optimal dilutions/concentrations should be determined by the end user.

Application	Abreviews	Notes
IHC-P		Use a concentration of 6 µg/ml. Perform heat mediated antigen retrieval before commencing with IHC staining protocol.

Target

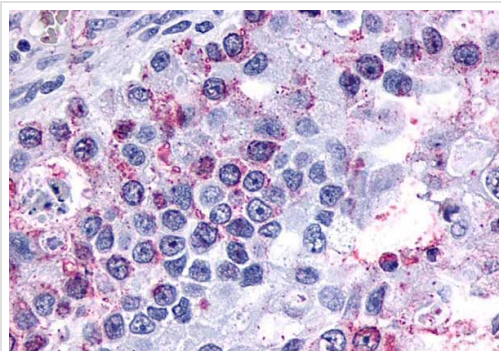
Function	Orphan receptor with constitutive G(s) signaling activity that activate cyclic AMP. Has a potential role in modulating a number of brain functions, including behavioral responses to stress (By similarity), amyloid-beta peptide generation in neurons and neurite outgrowth (By similarity). Maintains also meiotic arrest in oocytes.
Tissue specificity	Expressed predominantly in the central nervous system, and at low levels in the lung, kidney, testis, ovary and eye. Highly expressed in regions of the brain implicated in the Alzheimer disease.
Sequence similarities	Belongs to the G-protein coupled receptor 1 family.
Cellular localization	Cell membrane.

Images



Immunohistochemical analysis of formalin-fixed, paraffin-embedded human brain, neurons and glia tissue labeling GPCR GPR3 with ab219786 at 6 µg/mL.

Immunohistochemistry (Formalin/PFA-fixed paraffin-embedded sections) - Anti-GPCR GPR3 antibody - Extracellular domain (ab219786)



Immunohistochemical analysis of formalin-fixed, paraffin-embedded human ovary carcinoma tissue labeling GPCR GPR3 with ab219786 at 6 µg/mL.

Immunohistochemistry (Formalin/PFA-fixed paraffin-embedded sections) - Anti-GPCR GPR3 antibody - Extracellular domain (ab219786)

Please note: All products are "FOR RESEARCH USE ONLY. NOT FOR USE IN DIAGNOSTIC PROCEDURES"

Our Abpromise to you: Quality guaranteed and expert technical support

- Replacement or refund for products not performing as stated on the datasheet
- Valid for 12 months from date of delivery
- Response to your inquiry within 24 hours
- We provide support in Chinese, English, French, German, Japanese and Spanish
- Extensive multi-media technical resources to help you
- We investigate all quality concerns to ensure our products perform to the highest standards

If the product does not perform as described on this datasheet, we will offer a refund or replacement. For full details of the Abpromise, please visit <https://www.abcam.com/abpromise> or contact our technical team.

Terms and conditions

- Guarantee only valid for products bought direct from Abcam or one of our authorized distributors