

Product datasheet

Anti-GPCR GPR43 antibody ab124272

1 References 2 Images

Overview

Product name	Anti-GPCR GPR43 antibody
Description	Rabbit polyclonal to GPCR GPR43
Host species	Rabbit
Tested applications	Suitable for: ELISA, IHC-P, ICC/IF
Species reactivity	Reacts with: Human
Immunogen	Synthetic peptide conjugated to KLH, corresponding to the C terminal region of Human GPCR GPR43.
Positive control	Human tonsil tissue; COS7 cells

Properties

Form	Liquid
Storage instructions	Shipped at 4°C. Upon delivery aliquot and store at -20°C. Avoid freeze / thaw cycles.
Storage buffer	pH: 7.40 Preservative: 0.02% Sodium azide Constituents: 49% PBS, 50% Glycerol, 0.88% Sodium chloride Note: PBS is without Mg ²⁺ and Ca ²⁺
Purity	Immunogen affinity purified
Clonality	Polyclonal
Isotype	IgG

Applications

Our [Abpromise guarantee](#) covers the use of **ab124272** in the following tested applications.

The application notes include recommended starting dilutions; optimal dilutions/concentrations should be determined by the end user.

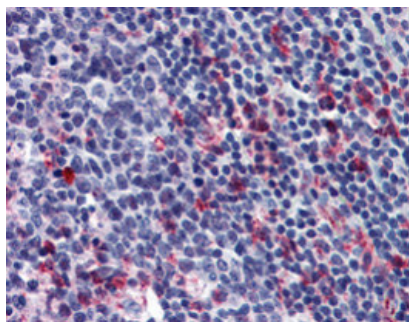
Application	Abreviews	Notes
ELISA		1/1000.
IHC-P		Use a concentration of 5 µg/ml.

Application	Abreviews	Notes
ICC/IF		1/100 - 1/500.

Target

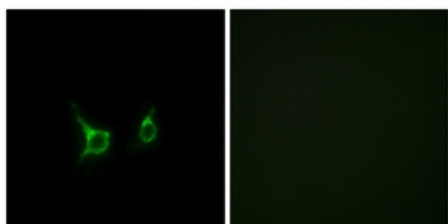
Function	Receptor for short chain fatty acids through a G(i)-protein-mediated inhibition of adenylyl cyclase and elevation of intracellular calcium. The rank order of potency for agonists of this receptor is acetate= propionate = butyrate > pentanoate = formate.
Tissue specificity	Expressed at relatively high levels in peripheral blood leukocytes and, to lesser, extent, in spleen.
Sequence similarities	Belongs to the G-protein coupled receptor 1 family.
Cellular localization	Cell membrane.

Images



ab124272, at 5 µg/ml, staining GPCR GPR43 in formalin fixed, embedded Human tonsil tissue by Immunohistochemistry.

Immunohistochemistry (Formalin/PFA-fixed paraffin-embedded sections) - Anti-GPCR GPR43 antibody (ab124272)



ab124272, at a 1/100 dilution, staining GPCR GPR43 in COS7 cells by immunofluorescence.

The image on the right is treated with the synthesized peptide.

Immunocytochemistry/ Immunofluorescence - Anti-GPCR GPR43 antibody (ab124272)

Please note: All products are "FOR RESEARCH USE ONLY. NOT FOR USE IN DIAGNOSTIC PROCEDURES"

Our Abpromise to you: Quality guaranteed and expert technical support

- Replacement or refund for products not performing as stated on the datasheet
- Valid for 12 months from date of delivery
- Response to your inquiry within 24 hours

- We provide support in Chinese, English, French, German, Japanese and Spanish
- Extensive multi-media technical resources to help you
- We investigate all quality concerns to ensure our products perform to the highest standards

If the product does not perform as described on this datasheet, we will offer a refund or replacement. For full details of the Abpromise, please visit <https://www.abcam.com/abpromise> or contact our technical team.

Terms and conditions

- Guarantee only valid for products bought direct from Abcam or one of our authorized distributors