

Product datasheet

Anti-GPCR GPR55 antibody ab203663

[3 References](#) [2 Images](#)

Overview

Product name	Anti-GPCR GPR55 antibody
Description	Rabbit polyclonal to GPCR GPR55
Host species	Rabbit
Tested applications	Suitable for: WB
Species reactivity	Reacts with: Mouse, Human
Immunogen	Synthetic peptide within Human GPCR GPR55 aa 150-250 conjugated to keyhole limpet haemocyanin. The exact immunogen sequence used to generate this antibody is proprietary information. If additional detail on the immunogen is needed to determine the suitability of the antibody for your needs, please contact our Scientific Support team to discuss your requirements. Database link: Q9Y2T6

 [Run BLAST with](#)

 [Run BLAST with](#)

General notes

The Life Science industry has been in the grips of a reproducibility crisis for a number of years. Abcam is leading the way in addressing this with our range of recombinant monoclonal antibodies and knockout edited cell lines for gold-standard validation. Please check that this product meets your needs before purchasing.

If you have any questions, special requirements or concerns, please send us an inquiry and/or contact our Support team ahead of purchase. Recommended alternatives for this product can be found below, along with publications, customer reviews and Q&As

Properties

Form	Liquid
Storage instructions	Shipped at 4°C. Store at +4°C short term (1-2 weeks). Upon delivery aliquot. Store at -20°C long term. Avoid freeze / thaw cycle.
Storage buffer	pH: 7.2 Preservative: 0.09% Sodium azide Constituents: 50% Glycerol (glycerin, glycerine), 0.01% BSA
Purity	Protein A purified
Clonality	Polyclonal
Isotype	IgG

Applications

The Abpromise guarantee

Our [Abpromise guarantee](#) covers the use of ab203663 in the following tested applications.

The application notes include recommended starting dilutions; optimal dilutions/concentrations should be determined by the end user.

Application	Abreviews	Notes
WB		1/100 - 1/1000. Detects a band of approximately 37 kDa (predicted molecular weight: 37 kDa).

Target

Function

May be involved in hyperalgesia associated with inflammatory and neuropathic pain (By similarity). Receptor for L-alpha-lysophosphatidylinositol (LPI). LPI induces Ca(2+) release from intracellular stores via the heterotrimeric G protein GNA13 and RHOA. Putative cannabinoid receptor. May play a role in bone physiology by regulating osteoclast number and function.

Tissue specificity

Expressed in the caudate nucleus and putamen, but not detected in the hippocampus, thalamus, pons cerebellum, frontal cortex of the brain or in the liver. Expressed in osteoclasts and osteoblasts.

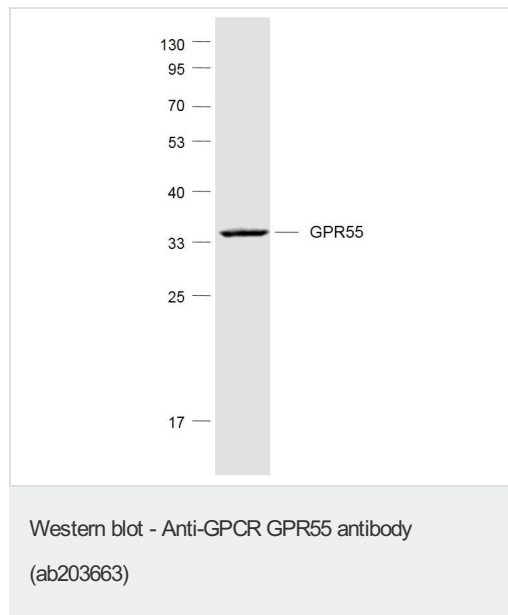
Sequence similarities

Belongs to the G-protein coupled receptor 1 family.

Cellular localization

Cell membrane.

Images

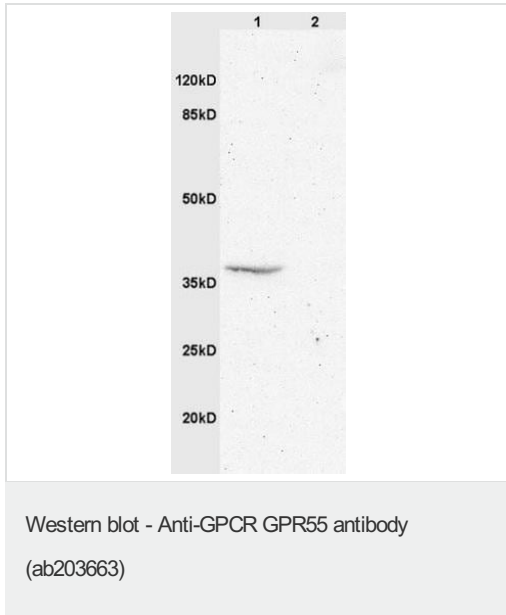


Anti-GPCR GPR55 antibody (ab203663) + U87MG cell lysates

Secondary

A conjugated secondary antibody at 1/20000 dilution

Predicted band size: 37 kDa



All lanes : Anti-GPCR GPR55 antibody (ab203663) at 1/200 dilution

Lane 1 : Mouse brain lysate

Lane 2 : Mouse embryo lysate

Secondary

All lanes : Goat Anti-Rabbit IgG Antibody (H+L), HRP Conjugated at 1/3000 dilution

Predicted band size: 37 kDa

Observed band size: 37 kDa

Please note: All products are "FOR RESEARCH USE ONLY. NOT FOR USE IN DIAGNOSTIC PROCEDURES"

Our Abpromise to you: Quality guaranteed and expert technical support

- Replacement or refund for products not performing as stated on the datasheet
- Valid for 12 months from date of delivery
- Response to your inquiry within 24 hours

- We provide support in Chinese, English, French, German, Japanese and Spanish
- Extensive multi-media technical resources to help you
- We investigate all quality concerns to ensure our products perform to the highest standards

If the product does not perform as described on this datasheet, we will offer a refund or replacement. For full details of the Abpromise, please visit <https://www.abcam.com/abpromise> or contact our technical team.

Terms and conditions

- Guarantee only valid for products bought direct from Abcam or one of our authorized distributors