

Product datasheet

Anti-GPCR LGR6 antibody [EPR6874] (HRP) ab205760

Recombinant RabMAb

1 Image

Overview

Product name	Anti-GPCR LGR6 antibody [EPR6874] (HRP)
Description	Rabbit monoclonal [EPR6874] to GPCR LGR6 (HRP)
Host species	Rabbit
Conjugation	HRP
Tested applications	Suitable for: WB
Species reactivity	Reacts with: Human Predicted to work with: Mouse, Rat ▲
Immunogen	Synthetic peptide within Human GPCR LGR6 aa 850-950 (intracellular). The exact sequence is proprietary. Database link: Q9HBX8
Positive control	WB: Human Adrenal Gland tissue lysate
General notes	This product is a recombinant monoclonal antibody, which offers several advantages including: <ul style="list-style-type: none"> - High batch-to-batch consistency and reproducibility - Improved sensitivity and specificity - Long-term security of supply - Animal-free production For more information see here . Our RabMAb [®] technology is a patented hybridoma-based technology for making rabbit monoclonal antibodies. For details on our patents, please refer to RabMAb[®] patents .

Properties

Form	Liquid
Storage instructions	Shipped at 4°C. Store at +4°C short term (1-2 weeks). Upon delivery aliquot. Store at -20°C. Stable for 12 months at -20°C. Store In the Dark.
Storage buffer	pH: 7.40 Preservative: 0.1% Proclin Constituents: 30% Glycerol, 1% BSA, PBS
Purity	Protein A purified

Clonality	Monoclonal
Clone number	EPR6874
Isotype	IgG

Applications

Our [Abpromise guarantee](#) covers the use of **ab205760** in the following tested applications.

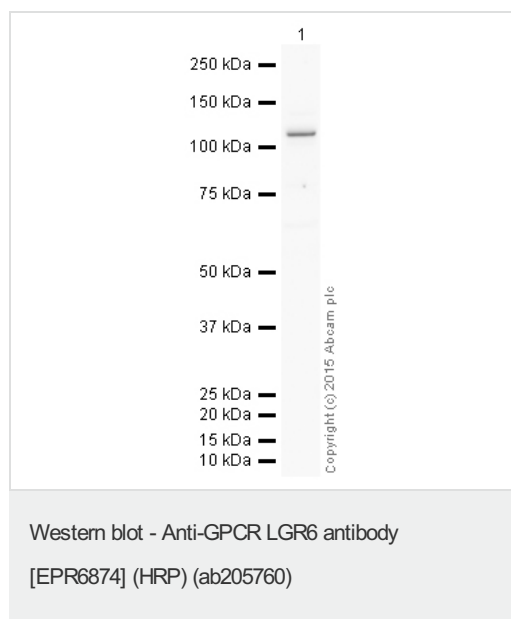
The application notes include recommended starting dilutions; optimal dilutions/concentrations should be determined by the end user.

Application	Abreviews	Notes
WB		1/2000. Detects a band of approximately 104 kDa (predicted molecular weight: 104 kDa).

Target

Function	Orphan receptor.
Sequence similarities	Belongs to the G-protein coupled receptor 1 family. Contains 15 LRR (leucine-rich) repeats. Contains 1 LRRNT domain.
Post-translational modifications	Phosphorylated upon DNA damage, probably by ATM or ATR.
Cellular localization	Cell membrane.

Images



Anti-GPCR LGR6 antibody [EPR6874] (HRP) (ab205760) at 1/2000 dilution + Adrenal (Human) Whole Cell Lysate - adult normal tissue at 10 μ g

Developed using the ECL technique.

Performed under reducing conditions.

Predicted band size: 104 kDa

Observed band size: 104 kDa

Exposure time: 20 minutes

This blot was produced using a 4-12% Bis-tris gel under the MOPS buffer system. The gel was run at 200V for 50 minutes before being transferred onto a Nitrocellulose membrane at 30V for 70 minutes.

The membrane was then blocked for an hour using 3% milk before being incubated with ab205760 overnight at 4°C. Antibody binding was visualised using ECL development solution [ab133406](#).

Please note: All products are "FOR RESEARCH USE ONLY. NOT FOR USE IN DIAGNOSTIC PROCEDURES"

Our Abpromise to you: Quality guaranteed and expert technical support

- Replacement or refund for products not performing as stated on the datasheet
- Valid for 12 months from date of delivery
- Response to your inquiry within 24 hours

- We provide support in Chinese, English, French, German, Japanese and Spanish
- Extensive multi-media technical resources to help you
- We investigate all quality concerns to ensure our products perform to the highest standards

If the product does not perform as described on this datasheet, we will offer a refund or replacement. For full details of the Abpromise, please visit <https://www.abcam.com/abpromise> or contact our technical team.

Terms and conditions

- Guarantee only valid for products bought direct from Abcam or one of our authorized distributors