


Product datasheet

Anti-GPCR TAS1R2 antibody - N-terminal ab150495

1 Image

Overview

Product name	Anti-GPCR TAS1R2 antibody - N-terminal
Description	Rabbit polyclonal to GPCR TAS1R2 - N-terminal
Host species	Rabbit
Specificity	BLAST analysis of the peptide immunogen showed no homology with other Human proteins.
Tested applications	Suitable for: IHC-P
Species reactivity	Reacts with: Human Predicted to work with: Chimpanzee, Monkey, Baboon, Gorilla, Orangutan 
Immunogen	Synthetic 20 amino acid peptide from the N terminal extracellular domain of Human GPCR TAS1R2.
Positive control	Human taste receptor cells.
General notes	<p>The Life Science industry has been in the grips of a reproducibility crisis for a number of years. Abcam is leading the way in addressing this with our range of recombinant monoclonal antibodies and knockout edited cell lines for gold-standard validation. Please check that this product meets your needs before purchasing.</p> <p>If you have any questions, special requirements or concerns, please send us an inquiry and/or contact our Support team ahead of purchase. Recommended alternatives for this product can be found below, along with publications, customer reviews and Q&As</p>

Properties

Form	Liquid
Storage instructions	Shipped at 4°C.
Storage buffer	Preservative: 0.1% Sodium azide Constituent: 99% PBS
Purity	Immunogen affinity purified
Clonality	Polyclonal
Isotype	IgG

Applications

The Abpromise guarantee

Our [Abpromise guarantee](#) covers the use of ab150495 in the following tested applications.

The application notes include recommended starting dilutions; optimal dilutions/concentrations should be determined by the end user.

Application	Abreviews	Notes
IHC-P		Use a concentration of 5 - 9 µg/ml. Perform heat mediated antigen retrieval before commencing with IHC staining protocol.

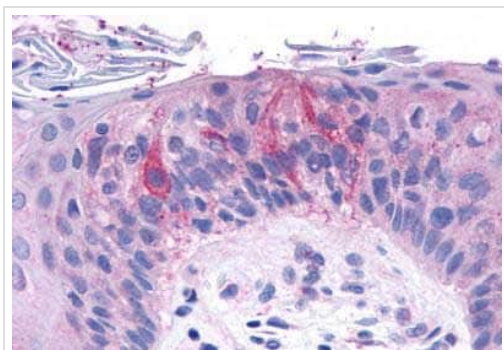
Target

Function Putative taste receptor. TAS1R2/TAS1R3 recognizes diverse natural and synthetic sweeteners.

Sequence similarities Belongs to the G-protein coupled receptor 3 family. TAS1R subfamily.

Cellular localization Cell membrane.

Images



Immunohistochemical analysis of formalin-fixed, paraffin-embedded Human taste receptor cells labelling GPCR TAS1R2 with ab150495 at 9 µg/ml.

Immunohistochemistry (Formalin/PFA-fixed paraffin-embedded sections) - Anti-GPCR TAS1R2 antibody - N-terminal (ab150495)

Please note: All products are "FOR RESEARCH USE ONLY. NOT FOR USE IN DIAGNOSTIC PROCEDURES"

Our Abpromise to you: Quality guaranteed and expert technical support

- Replacement or refund for products not performing as stated on the datasheet
- Valid for 12 months from date of delivery
- Response to your inquiry within 24 hours
- We provide support in Chinese, English, French, German, Japanese and Spanish
- Extensive multi-media technical resources to help you
- We investigate all quality concerns to ensure our products perform to the highest standards

If the product does not perform as described on this datasheet, we will offer a refund or replacement. For full details of the Abpromise, please visit <https://www.abcam.com/abpromise> or contact our technical team.

Terms and conditions

- Guarantee only valid for products bought direct from Abcam or one of our authorized distributors